



**Adam Tas Corridor Energy**

# **Cut the cable tray connecting pieces**





## Overview

---

Begin cutting with slow, steady strokes if using a hacksaw, or carefully guide the power saw along the marked line. Developed by Interstates, this cable tray cutting guide acts as a guide for a metal cutting circular saw for cutting the side rail of a cable tray as well as a guide for drilling the connecting holes in the cable tray. They come in various materials such as steel, aluminum, and fiberglass, and shapes including ladder, perforated, and solid-bottom designs. The flexible horizontal adjustable splice plates are designed to allow for horizontal direction changes when standard horizontal fittings do not conform.

, ROCOL) - Vice or clamps - Measuring tape - Marker or pencil - Safety goggles - Gloves - Dust mask - File or sandpaper - Power drill. Oglaend System manufacture and deliver Multidiscipline modular bolted support systems, cable trays, cable ladders and accessories for complete installation and containment of Instrument, Electrical, Telecom, HVAC and Piping services.



## Cut the cable tray connecting pieces

---



### Make a (45-45) 90 Gusset Bend in Electrical Cable Tray In One Piece

How to make a 90 electrical cable tray bend to measurement with a gusset of your choice using one piece of tray. Great if you are new or just forgot how to do it, this easy to follow guide makes

### How to Demolish Cable Trays: A Complete Guide

Learn how to safely and effectively demolish cable trays. Our guide covers preparation, the demolition process, and post-demolition steps.



### The Practical Skills Series: Cable Tray

Full video content: Introduction, considerations for using tray - 4 mins The Easy Bend - 19 minutes The Reducer/Enlarger - 4 mins The Basic T - 13.5 minutes The Set and Bridge - 5.5 minutes The

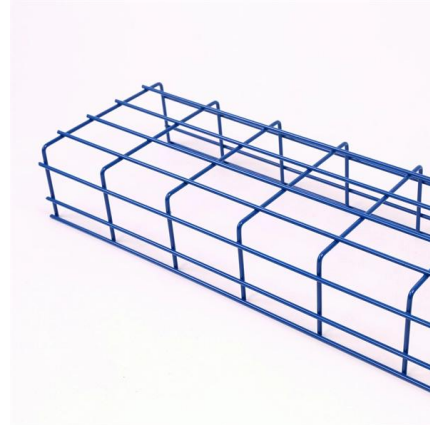


### CUTTING GUIDELINE

Hilti's cordless bandsaw is an appropriate tool for cutting low height, thin metal products such as cable ladders and trays and support channels.



Accurate cutting is achieved with low noise and debris.



## Cable Tray Technical Guide A practical guide to product selection and

Cable Tray Technical Guide A practical guide to product selection and installation This guide for engineers and installers has been developed by ABB as a practical reference regarding cable tray

## Mounting instructions

6.2 Pre-drilling unperforated cut cable trays If unperforated cable trays are cut, then appropriate drill holes must be drilled for the straight connections and for the mounting of fittings and joint bars.



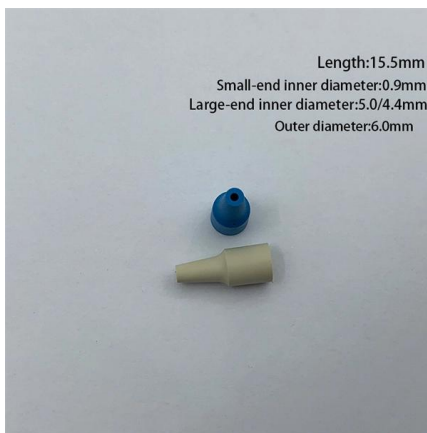
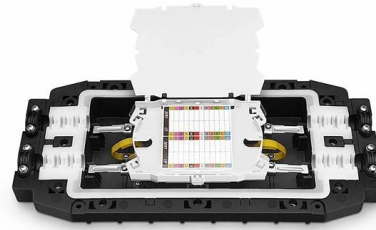
## Cable Tray Fitting Accessories

Cable tray fitting accessories, also known as cable tray accessories, are a wide range of components used to connect, support, or change the direction of mated



## How to Cut a Cable Tray

However, every installation is unique, and sometimes it becomes necessary to cut a cable tray to fit specific spaces or to connect different sections. Properly cutting a cable tray ensures



## CABLE TRAY

Eventually it will be necessary to field cut the cable tray because the length of the cable tray required will be less than standard length. If there are many cuts to be made in a given area, waste can be

## HOW TO CUT CABLOFIL CABLE TRAY

Cut each wire with one clean cut - eliminating any grinding or touch-up. Cut the bottom wires first, in order as shown, from the underside of the tray. Rest the lower jaw of the cutters against the cradle



## QUICK TRAY PRO

Smooth, round wires minimize dust buildup and cable snagging. T-weld top wire, pre-galvanized steel or black powder finish. Large 2 x 4 in. (51 x 102mm) mesh allows cable to be routed into and out of the



## Cable Tray Cutting Guide

Developed by Interstates, this cable tray cutting guide acts as a guide for a metal cutting circular saw for cutting the side rail of a cable tray as well as a



## Trunking Cutting Techniques Guide , PDF

The document provides instructions for forming various bends and joints in electrical trunking and cable trays. It describes: 1) How to mark and cut a right-angle

## Cable Tray Construction Pt1: marking and cutting (subscribe for Pt 2)

In this video, we'll cover the essential steps of marking and cutting cable trays. We'll explore: 1. Measuring and marking: Accurate measurement and marking t





## How to Install Cable Tray: A Comprehensive Guide to Different Cable

Welcome to our step-by-step guide on installing cable trays! In this video, we'll explore the different types of cable trays available and provide detailed instructions for their installation.

### Cable Tray Cutting Guide

Developed by Interstates, this cable tray cutting guide acts as a guide for a metal cutting circular saw for cutting the side rail of a cable tray as well as a guide for drilling the connecting



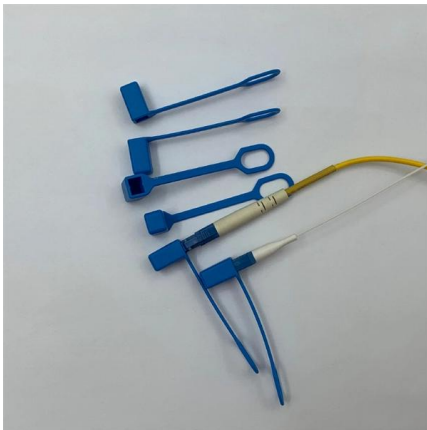
### How to Cut a Cable Tray

Proper cutting ensures a clean edge, maintains structural integrity, and prevents damage to the trays or cables. This guide aims to provide clear, step-by-step instructions on how to cut a cable tray



### Cable Tray

Use the Cut tool to cut a straight cable tray into two separate pieces. When the tool is enabled, moving the cursor over a cable tray finds the nearest centerline point, and the designated point and the cut

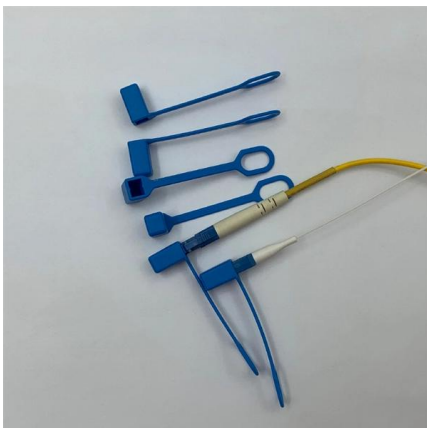
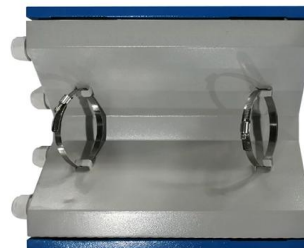


## How Do You Join Cable Trays Together?

How Do You Join Cable Trays Together? In this video, we dive into the essential process of joining cable trays together for your home entertainment system. A

## Join Two Straight, Ladder-Type Cable Tray Sections Together

This video demonstrates a cable tray, its purpose, and how to assemble one. It demonstrates mending plates, fasteners, bolts and how to secure the cable tray. Module



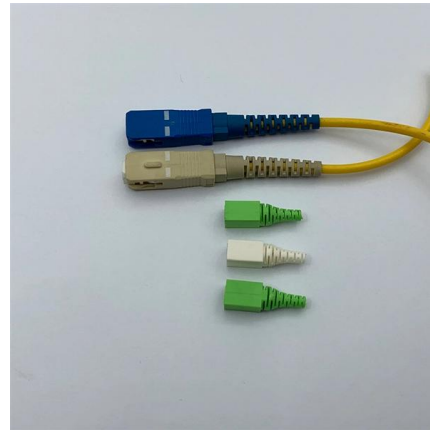
## Flexible horizontal adjustable splice plate instructions

Field cut the cable tray/ladder based on the desired angle to be made to fit with the installation. Mark a line on the cable tray/ladder where the cutting will occur.



## How to Cut a Cable Tray

Selecting the right method for cutting a cable tray depends on the material, tray size, and precision needed. Proper technique ensures safety, clean edges, and minimal material waste.



## DIY Installation: Mastering Light Duty Cable Tray Setup

Explore our comprehensive DIY guide to master the installation of light-duty cable trays. From planning to cable organization, follow step-by-step instructions for a tidy and efficient cable

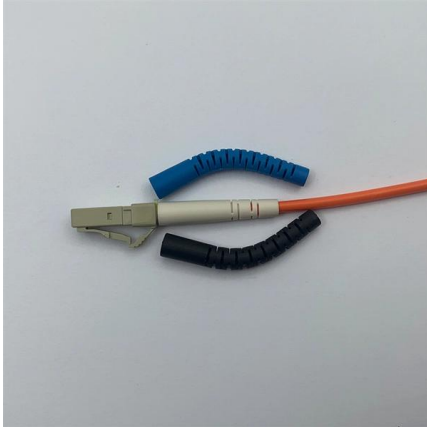
## How To Cut Stainless Steel Cable Tray?

Cutting stainless steel cable trays is a crucial skill for professionals in various industries. By following the proper techniques, using the right tools, and



## What are the main components of a cable tray?

Discover the main components of a cable tray system. Learn about tray types, fittings, supports, and accessories for effective cable management.



## Contact Us

---

For datasheets, pricing, or custom telecom energy solutions, please visit:  
<https://koskolong.co.za>