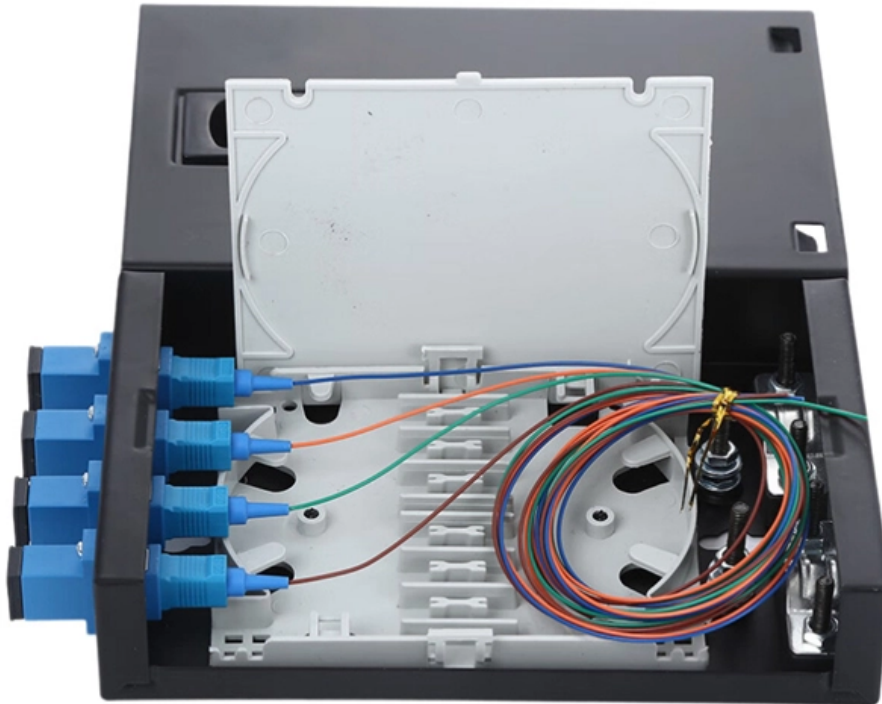




Adam Tas Corridor Energy

DMT Wavelength Division Multiplexing





Overview

In fiber-optic communications, wavelength-division multiplexing (WDM) is a technology which multiplexes a number of optical carrier signals onto a single optical fiber by using different wavelengths (i.



DMT Wavelength Division Multiplexing

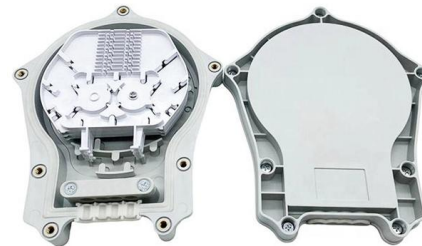


Wavelength-Division Multiplexing Network

Known as wavelength division multiplexing (WDM) and later dense wavelength division multiplexing (DWDM), this technique has driven the total bandwidth capacity of a single fiber from a

Wavelength division multiplexing

Wavelength division multiplexing The SPIE Digital Library offers a comprehensive range of content on wavelength division multiplexing (WDM), reflecting its significance in optical communications.



DMT_DSB_OFc_final

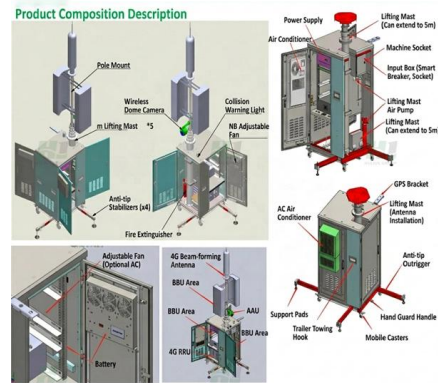
Combining 2 or 8 DMT signals to optical superchannels, it allows to transmit multiple 100 or 400Gb/s signals over high capacity DWDM links as used for high capacity inter-datacenter interconnects.

What is frequency-division multiplexing (FDM) and how does it work?

Code-division multiplexing is another method for



multiplexing different bit streams on a single link. Frequency-division multiplexing advantages and disadvantages When FDM is used in a



Wavelength Division Multiplexing , WDM Technology in

Learn why Wavelength division multiplexing (WDM) technology carries great potential to help network operators stay ahead of growing demands

Demonstration of 4 lanes of 4 x 100 Gbps DMT

We experimentally demonstrate 4 lanes of 416-Gb/s discrete multi-tone (DMT) transmission with 50-GHz channel spacing. This is the first demonstration of 4 x 100 G transmission with less than



3.5 Wavelength multiplexing and demultiplexing

3.5 Wavelength multiplexing and demultiplexing Wavelength multiplexers and demultiplexers are needed in order to be able to use wavelength division multiplexing. With just two wavelengths, the



Wavelength Division Multiplexers (WDM)

Wavelength Division Multiplexing (WDM) is a technique in fiber-optic communication systems that enables multiple optical signals with different wavelengths to be combined, transmitted, and

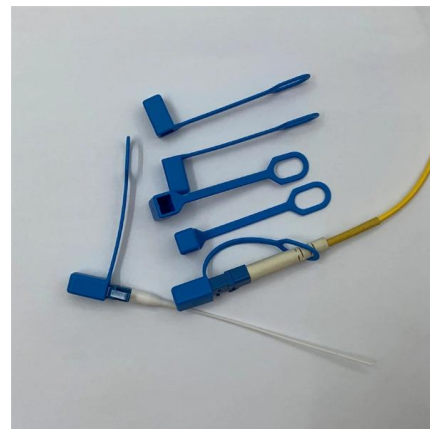


Wavelength Division Multiplexing (WDM)

At the transmitting end there are several independently modulated light sources, each emitting signals at a unique wavelength. Here a wavelength multiplexer is needed to combine these optical outputs into

CWDM vs DWDM vs WDM: Differences & Similarities

Wavelength division multiplexing (WDM) technology is widely used in modern high-capacity fiber optic communication networks. The two most common



Wavelength Division Multiplexing

Wavelength division multiplexing (WDM) is a technique of multiplexing multiple optical carrier signals through a single optical fiber channel by varying the



Optically Multiplexed Systems: Wavelength Division Multiplexing

Optically Multiplexed Systems: Wavelength Division Multiplexing Meena Dasan, Fredy Francis, Kundil T. Sarath, Elambilayi Dipin and Talabattula Srinivas



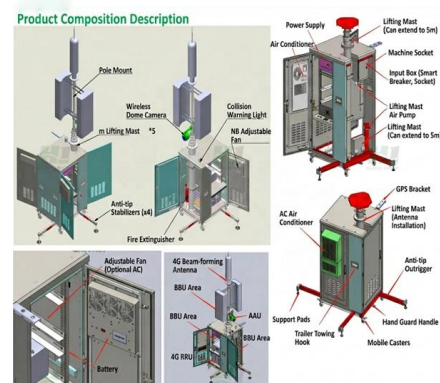
Wavelength division multiplexers and some experimental analysis in

This article will describe the basic principles and some applications of wavelength division multiplexing and then compare the application of partial multiplexing technology in different fields of wavelength



Defining DMT: Discrete Multi-Tone

Multi-Carrier Modulation for Wireless Communications: DMT principles can also be applied to wireless communication systems. Multi-Carrier Modulation (MCM), which is based on DMT, is used in





Wavelength Division Multiplexers (WDM)

Explore the fundamentals of Wavelength Division Multiplexing (WDM), its types, benefits, challenges, and future prospects in our detailed guide.

Defining DMT: Discrete Multi-Tone

Discrete Multi-Tone (DMT) is a modulation technique used in digital communication systems, particularly in the context of Digital Subscriber Line (DSL) technology.



Introduction To WDM , part of Wavelength Division Multiplexing: A

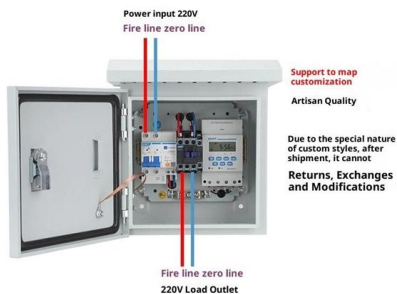
This introductory chapter of *Wavelength Division Multiplexing: A Practical Engineering Guide* traces the history of wavelength division multiplexing (WDM). WDM refers to a multiplexing and

Wavelength division multiplexing

The SPIE Digital Library offers a comprehensive range of content on wavelength division multiplexing (WDM), reflecting its significance in optical communications.



Product Wiring Diagram



Unraveling the Mysteries of FDM, TDM, and WDM

This article introduces three multiplexing technologies in optical fiber communication: Frequency Division Multiplexing (FDM), Time Division

Orthogonal frequency-division multiplexing

In telecommunications, orthogonal frequency-division multiplexing (OFDM) is a type of digital transmission used in digital modulation for encoding digital (binary) data



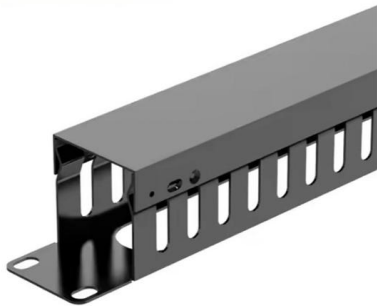
Wavelength division multiplexing

This section contains examples of wavelength division multiplexing (WDM) circuits. Wavelength division multiplexing is a method of modulating multiple signals at



3.5 Wavelength multiplexing and demultiplexing

A number of different technologies have been developed for multiplexing and demultiplexing multiple wavelengths, but the principle is illustrated by a prism, as shown in Figure 27.



Dense Wavelength Division Multiplexing

Dense Wavelength Division Multiplexing (DWDM) is defined as a method that multiplexes many wavelength channels into a single fiber, allowing for increased aggregate bandwidth per fiber. Each

Dense Wavelength Division Multiplexing

Dense wavelength division multiplexing (DWDM) is defined as a fiber-optic transmission technique that involves multiplexing multiple wavelength signals onto a single fiber, allowing the transmission of



dense wavelength-division multiplexing (DWDM)

Learn how dense wavelength-division multiplexing (DWDM) dramatically scales bandwidth by combining up to 80 channels over a single pair





Wavelength Division Multiplexing Network

5.1 Basics of wavelength-division multiplexing
5.1.1 Coarse wavelength-division multiplexing and dense wavelength-division multiplexing
Wavelength-division multiplexing (WDM) enables multiple-shift

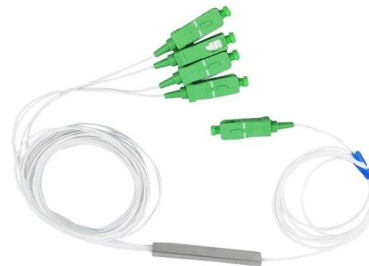


What is WDM or DWDM?

What is WDM or DWDM? Wavelength Division Multiplexing (WDM) is a fiber-optic transmission technique that enables the use of multiple light wavelengths (or

Wavelength Division Multiplexing (WDM) Equipment

The wavelength division multiplexing (WDM) equipment market is projected to grow from USD 48.9 billion in 2025 to USD 84.4 billion by 2035, at a



Contact Us

For datasheets, pricing, or custom telecom energy solutions, please visit:
<https://koskolong.co.za>