



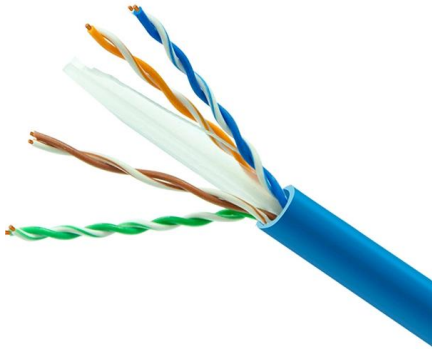
Adam Tas Corridor Energy

Debugging the KVM Switch





Debugging the KVM Switch



GitHub

Patches are welcome at the KVM mailing list kvm@vger.kernel. Please prefix messages with: [kvm-unit-tests PATCH] You can add the following to .git/config to

xorg

I'm hoping to find log entries to be used for troubleshooting before giving up on the KVM switch.

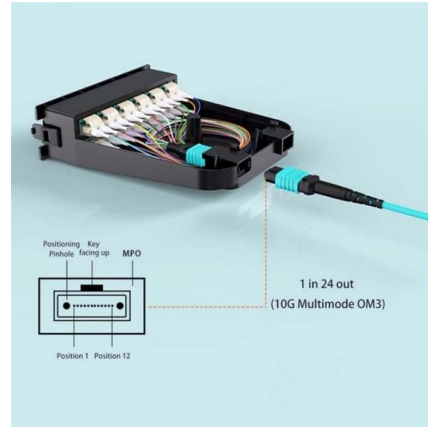


KVM troubleshooting in six simple steps

KVM troubleshooting in six simple steps To troubleshoot common KVM issues, start by checking the logs. Then, isolate the issue and check the VM status using virsh commands. Finally,

Enable Logging on QEMU/KVM VM

Configuring logging for QEMU/KVM VMs can be accomplished through command-line options or by adjusting libvirt configurations, depending on



Troubleshooting KVM Virtualization Problem With Log

There are various log files stored on the host system to assist with



Debugging QEMU/KVM Setup If Something Goes Wrong (e.g.,

It took us some time to debug several things that did not work as expected when run on top of QEMU/KVM. Here, we describe our experience of debugging 1GB page support with KVM.



Troubleshooting keyboard problems when connected to a KVM switch

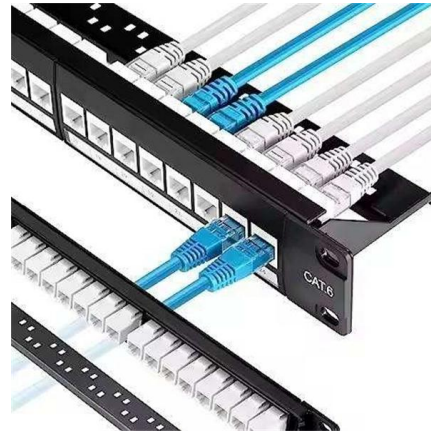
Learn about troubleshooting the KVM switch on a 1x8 and 2x8 Console Manager. Before beginning this isolation procedure, invoke the OSCAR interface on your monitor. The OSCAR interface uses step





How to debug the KVM module? : r/kernel

Couldn't we use gdb breakpoint from the host for a VM using KVM? I never used breakpoints for x86 KVM code, but we should be able to debug the KVM code similar to debug Linux kernel right?



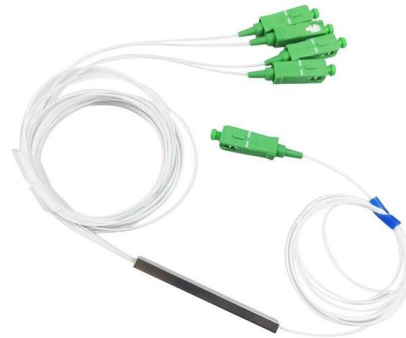
WebiTelecomms Cabling

Debugging the Ubuntu kernel with GDB and QEMU

01-23-2018 , tags: [ubuntu kernel debug gdb qemu] Debugging the Ubuntu kernel with GDB and QEMU This tutorial focuses on the practical aspects of preparing an Ubuntu libvirt virtual machine to debug

Debugging QEMU/KVM Setup If Something Goes Wrong (e.g.,

Debugging QEMU/KVM Setup If Something Goes Wrong (e.g., Support for 1GB Pages) 01 Nov 2020 In our previous projects, we always did all development on real hardware. For example,



KVM Quick Troubleshooting Guide

I've noticed lately I've been recommending similar troubleshooting steps for KVMs before going into more technical concerns. We have the KVM



How does one debug the KVM subsystem?

I was recently debugging the QEMU source code and there are endpoints like `kvm_ioctl`, `kvm_vm_ioctl`, `kvm_vcpu_ioctl`, `kvm_device_ioctl` which interact with the `/dev/kvm` and VM and



Using WinDbg Over KDNNet on QEMU-KVM

If you want to enable the Windows kernel debugger using network transport (KDNNet) in a guest is hosted on Linux under QEMU-KVM, you need to

KVM guest virtual network configuration using Open vSwitch

Open vSwitch (OVS) is a production-quality, multilayer-virtual switch. It is designed to enable massive network automation through programmatic extension, while still supporting standard management





How to debug the Linux kernel with GDB and QEMU?

I'm new to kernel development and I would like to know how to run/debug the linux kernel using QEMU and gdb. I'm actually reading Robert Love's book but unfortunately it doesn't help the reader on

Debugging a kernel in QEMU/libvirt

The guest to be the target of the debugging session is a libvirt (or KVM/QEMU) style Virtual Machine. The guest virtual serial port should be mapped to the TCP port (TCP/1234) for use



WindowsGuestDrivers/GuestDebugging

Introduction Host computer - The computer that runs the debugging session, aka "remote debugger" (!WinDbg) Target computer - The computer that is being debugged (the debuggee) runs the kernel

Debugging in Extreme Context through QEMU+Linux-KVM

This blog introduced the method of using QEMU+Linux-KVM and installing debugging environment for Windows Kernel and most importantly - the usage of ISA-DebugCon peripheral device.



How to debug Virtualization problems

kvm-autotest is an excellent way of testing basic KVM functionality. ? Xen Some useful information on how to debug Xen issues can be found in the Debugging Xen Wiki page. If you think you found an



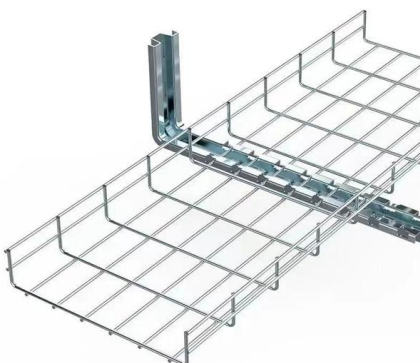
Kernel debugging with Qemu and WinDbg , Infosec

Conclusion In this article we presented how we can debug the Windows kernel under Qemu by using two virtual machines. First we installed the debugging tools in first virtual machine



How to Troubleshoot KVM Virtualization Problem - With Log

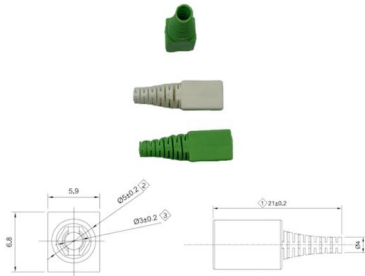
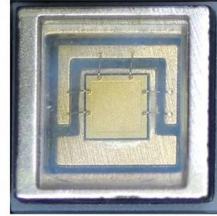
Some log files to be familiar with for Troubleshooting KVM Virtualization Problem There are various log files on the host system to assist with debugging KVM-related problems.





kvm-debugger/README.md at main · jkrshnmenon/kvm-debugger

The idea is to trap the KVM_RUN ioctl and replace it with a wrapper that catches KVM_EXIT_DEBUG. If the VM exit code is KVM_EXIT_DEBUG, we use the KVM functions to get the registers and send

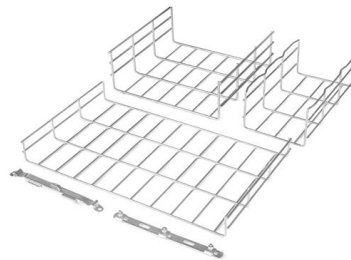


GitHub

Interactive bash script to switch between KVM/QEMU and VirtualBox hypervisors on Linux. Handles module loading/unloading, VM detection, and conflict resolution automatically.

KVM Switches General Troubleshooting , StarTech

Use the video cable, KVM switch, video source, and video destination in another setup to see if the problem is with the components or the setup. Use a different



KVM Switching for Separate AI Test and Build Workstations

Many AI developers maintain separate build and test workstations to avoid resource contention during long training runs and real-time inference debugging. A KVM switch paired with a



A tool to debug code running inside KVM based hypervisors

In situations where the source code of the hypervisor isn't available, it might be pretty hard to debug what goes on inside the VM. So I decided to make this thing that basically creates a GDB interface



Fix KVM Switch Issues: How to Solve Monitor Problems

Quick fixes for KVM switch monitor not working. Learn how to resolve common monitor issues including detection problems, switching delays, and

How to debug the KVM module? : r/kernel

I am trying to understand the KVM and QEMU internals. I am debugging QEMU using gdb but QEMU calls ioctl () to talk to KVM using /dev/kvm. But how do I debug when control reaches the kernel





DebuggingKVM

This page is part of the debugging series -- pages with debugging details for a variety of Ubuntu packages. If it is easily reproducible, try building from upstream git and reproducing. Then



Contact Us

For datasheets, pricing, or custom telecom energy solutions, please visit:
<https://koskolong.co.za>