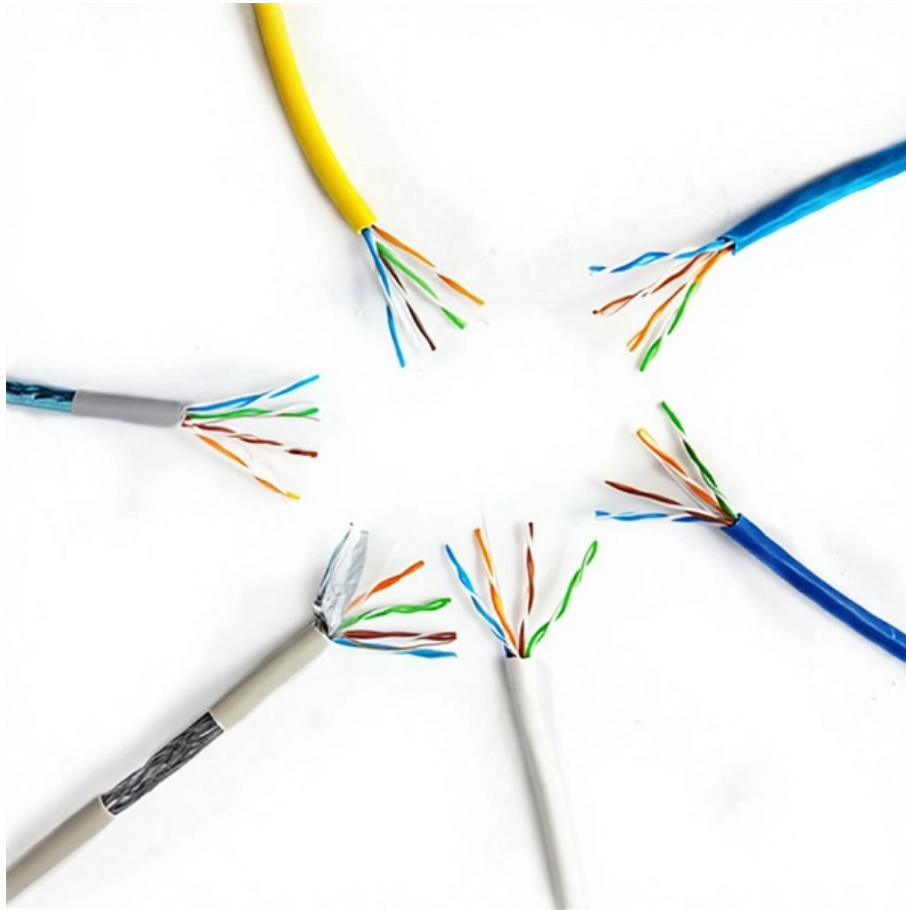




**Adam Tas Corridor Energy**

# **Design Principles of Circular Holes in Cable Trays**





## Design Principles of Circular Holes in Cable Trays

---

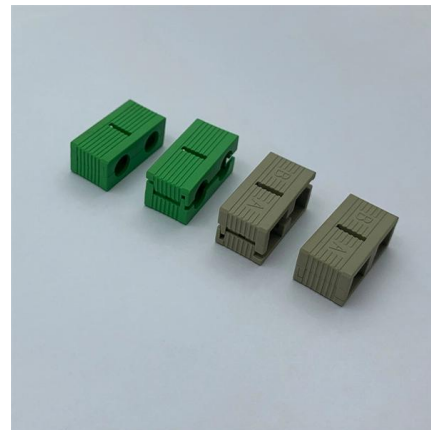


### How to Avoid Severe Heating of Metal Cable Trays

The eddy currents from AC power cables induced in the metallic tray generate additional heat. Eddy currents

### Optimal Geometry of Holes in a Cable Tray for Offshore Plants

Article on Optimal Geometry of Holes in a Cable Tray for Offshore Plants, published in Journal of Electromagnetic Engineering and Science 21 on 2021-09-30 by Daehoon Park+1. Read



### Cable Installation Guidelines in Trays

The document provides guidelines for installing cable in cable trays, including design considerations and formulas for calculating maximum tensions, sidewall

### Cable Tray Technical Guide A practical guide to product selection and

In designing supports for a cable tray system,



consideration should be given to the loads associated with future cable additions and any additional loading that may be applied to the cable tray system (e.g.,



### **Cable Tray Technical Guide A practical guide to product selection and**

SOLID-BOTTOM CABLE TRAY Providing additional cable protection, solid-bottom cable tray is sometimes preferred to support and protect numerous small instrumentation and control cables.

### **Instrument Location Layout and cable routing layout -**

Instrument Location Layout and cable routing layout Cable Tray Sizing: Top 35 Comprehensive Q& A Essential Calculations and Design Principles Q1: What is



### **Core Principles for Electrical and Instrumentation Cable**

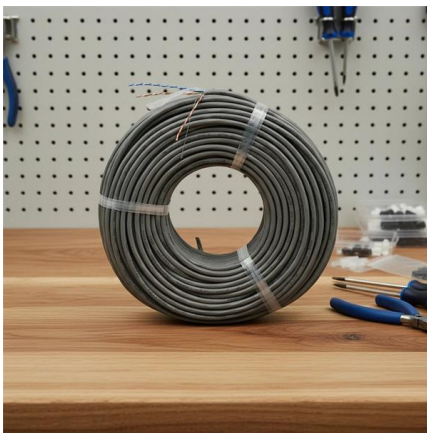
In industrial settings, electrical and instrumentation (E& I) cable trays or bridge racks play a critical role in organizing and supporting power, control, and signal cables





## Best Practice Guide to Cable Ladder and Cable Tray Systems

These guidelines will be particularly useful for the design, specification, procurement, installation and maintenance of these systems. Cable ladder systems and cable tray systems are designed for use

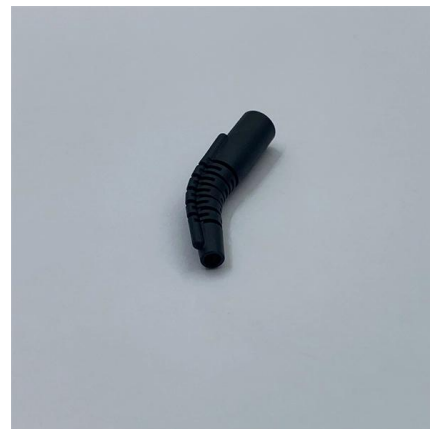


## How to Manage Cables in Cable Trays: Principles and Methods

This article explores the best practices and essential principles involved in cable classification and management within trays, helping professionals ensure the reliability and safety of

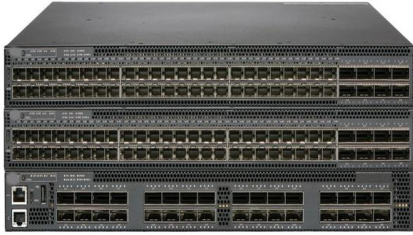
## Annex I

By convention, to avoid any misunderstanding and to simplify the cable tray design and installation, the bending radius for all cable trays and conduits should be at least 300 mm for Low Voltage, Sensitive



## Core Principles of Cable Routing

Cable routing is a critical aspect of any electrical or network installation, ensuring safety, performance, and ease of maintenance. Here's a deep dive into



## Trunking Cutting Techniques Guide , PDF

The document provides instructions for forming various bends and joints in electrical trunking and cable trays. It describes: 1) How to mark and cut a right-angle



## Types of Cable Trays - Advantages, Applications and Sizes

Explore the types of cable trays, their advantages, applications, and standard sizes. Learn how they improve cable management and support various industries.



## CABLING SYSTEM

1. SCOPE : This specification covers design, manufacture, assembly, testing at manufacturer's works, supply, delivery of G.I. ladder type cable tray with G.I. nuts and bolts of M.S. Steel Support,





## **B-Line series Cable Tray Design Considerations**

Cable tray must be capable of supporting not just the weight of the cable, but also the weight of any equipment or materials attached to the cable tray. Additionally, dynamic environmental elements

## **jees :: Journal of Electromagnetic Engineering and Science**

This paper proposes an efficient algorithm to determine the optimal geometry of holes in the cable tray for the desired area of holes. The detailed process of the proposed algorithm is described in this



## **Installation Of Cable In Cable Trays: NEC, Safety**

Cable installed in tray is subject to many of the same considerations as cable being installed in conduit systems. Correctly calculated data and adherence to the



## **Designing Cable Tray Layouts for Industrial Facilities**

Designing cable tray layouts for industrial facilities is both an art and a science. For the Electrical Draftsman, it entails translating complex power transmission



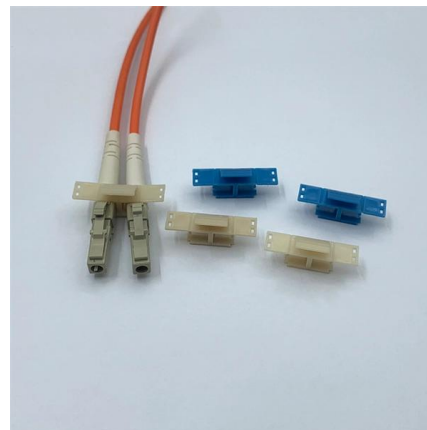
## Cable Laying: Everything You Must Know

After determining the routing of the cabling, a structured cabling project initially needs to consider the laying of cable trays, which can be made of metal, conduit, or



## Optimal Geometry of Holes in a Cable Tray for Offshore

This study demonstrates the impact of hole geometry on the crosstalk. In addition, an algorithm is proposed to determine the optimal geometry



## IEC Standard for Cable Tray: Complete Technical Guide

Cable trays play a vital role in supporting electrical cables and wires in commercial, industrial, and utility installations. For proper installation, design, and



## Optimal Geometry of Holes in a Cable Tray for Offshore Plants

This study analyzes the crosstalk effects caused by the geometry of holes in a cable tray in offshore plants. Using the analysis results, we determine the optimal hole geometry that can



## Best Practices for Cable Tray Design

Cable tray design is an essential practice in electrical infrastructure and network projects. It ensures the organization, safety, and efficiency of the system,

## GUIDE CABLE TRAYS TECHNICAL

In accordance with its continuous improvement policy, Legrand reserves the right to change the specifications and illustrations without notice. All illustrations, descriptions and technical information



## CABLE TRAY

Prior to installing cable in the cable tray, examine cable paths to ensure all areas are free of debris that may interfere with the cable's installation. The cable tray should never be used as a walkway.



## RECOMMENDED SPECIFICATIONS OF JUNCTION BOX AND

These Guidance Notes provide ABS recommendations for the design and construction of cable trays and junction boxes. These Guidance Notes are applicable to fixed and floating offshore structures as



## Contact Us

---

For datasheets, pricing, or custom telecom energy solutions, please visit:  
<https://koskolong.co.za>