



Adam Tas Corridor Energy

Detailed Explanation of Household Circuit Distribution Boxes





Detailed Explanation of Household Circuit Distribution Boxes



The Complete Guide to Distribution Box: Installation, Types & More

What's the difference between a distribution box and a sub-panel? A distribution box typically refers to the main electrical panel that receives power from the utility service. A sub-panel is

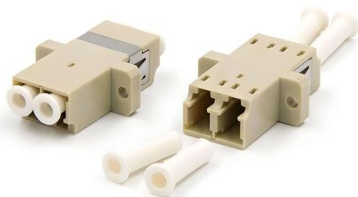
A Visual Guide to Understanding Ring Main Circuit

Learn how a ring main circuit works with a detailed diagram. Understand the components and the function of each part in this electrical circuit.



Distribution Box Guide: Types, Components & Solutions

Understand distribution boxes (DB boxes) in 5 minutes. Learn about types, components, functions, and uses. Find the perfect DB box for your needs.

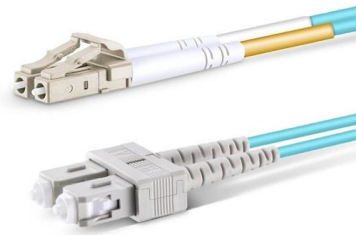


Distribution Box and Selection Guide

Different settings have distinct electrical requirements: Residential: Homes typically



require single-phase power and a Distribution Box with fewer

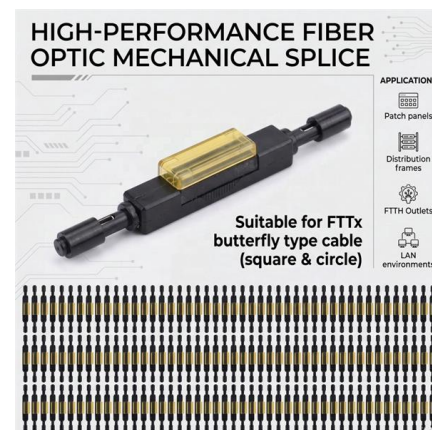


How to Choose a House Distribution Box , CHINT global

A well-chosen distribution box ensures the safety and efficiency of your household electrical system. This article guides you through selecting a

What is a Distribution Box? - A Comprehensive Guide

Whether in homes, offices, or industries, its importance cannot be overstated. Understanding the Basics of a Distribution Box A electrical distribution



What is an Electrical Distribution Box? A

At its core, an electrical distribution box (or distribution board) is a metal or plastic enclosure that houses various components responsible for





What Is an Electrical Distribution Box? A Complete Guide

The electrical distribution box serves a critical role in the safe distribution of power by centralizing circuit control and preventing overloads and



Distribution Boxes Explained: Types, Functions, and

Learn about distribution boxes, their types, functions, and safety features to ensure efficient and secure electrical power distribution in any building.

The Ultimate Guide to Distribution Box Types

Discover the key types of distribution boxes with NUOMAK's comprehensive guide. Learn about Main Distribution Boards (MDB), Consumer Units, Transfer



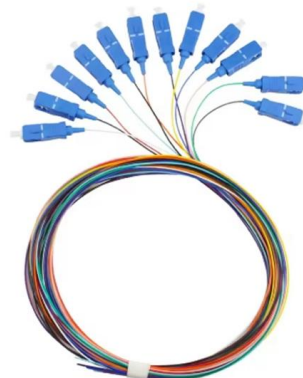
Power Distribution Boxes Explained Simply

This guide will cover what a power distribution box is, its working principle, and its significance. Whether you're a homeowner, an electrician, or



What Is Distribution Box (DB Box): Types, Functions,

You may be curious about them. They are distribution boxes (DB box), also known as distribution panels, which distribute electricity throughout a



The Complete Guide to Distribution Box: Installation, Types & More

The primary purpose of a distribution box is to provide a safe and organized way to control electrical circuits. When an electrical fault occurs, such as an overload or short circuit, the protective

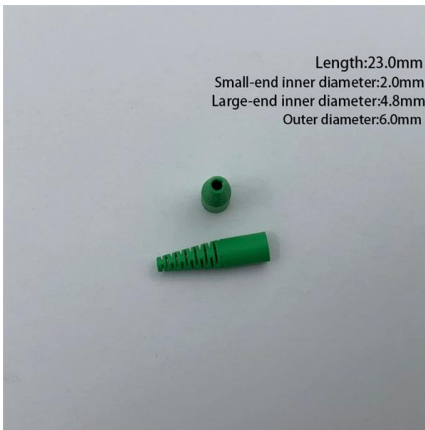
What is an Electrical Distribution Box? A

Discover everything you need to know about electrical distribution box! Learn about types, components, and how to choose.

DATA ADJUSTABLE, EASY TO USE



SET INCREASE DECREASE POWER SWITCH



A Definitive Guide To Distribution Boxes

Power distribution boxes are beneficial because they eliminate the requirement for each output device to be connected directly to the power source. As a result, there's no reason to utilize

House Distribution Board » Wiring Diagram

Wiring diagrams for house distribution boards consist of several components, including: The main breaker box, which is mounted to the wall. The



Distribution Box: Types and Functions , Axis-Electricals

A distribution box ensures that electrical supply is distributed in the building, also known as a distribution board, panel board, breaker panel, or electric panel. It is



Understanding Distribution Boxes:A Comprehensive Guide

A distribution boxes is an essential device that manages the safe and efficient flow of electrical power throughout different areas of a building or facility.



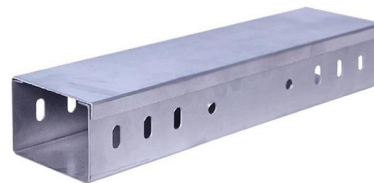
How Do Electrical Panels Work? - A Detailed Explanation

Electrical panels, or breaker panels as called by other people, are typically made with metal. They are shaped as a box and built within the wall for



Understanding Distribution Boxes: Your Guide to Power

What are the different types of distribution boxes? The table below provides a comprehensive overview of various distribution box types and



Distribution Boxes Types - The Complete Guide

The power distribution boxes deliver electricity from the main electrical main to other circuits. Several distribution boxes are designed for specific use in



