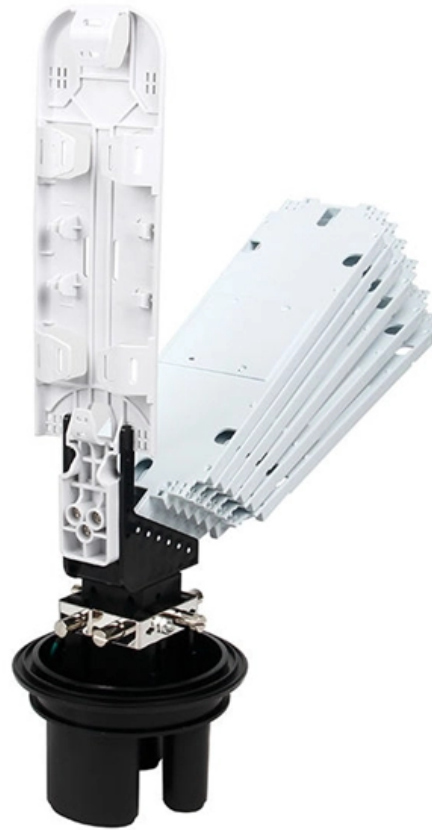




Adam Tas Corridor Energy

Detailed Explanation of Single Busbar Segmented Wiring





Detailed Explanation of Single Busbar Segmented Wiring



"Busbar Systems"

Figure 1 comprises a single-pole block diagram of a facility with 2 incoming feeders, 1 measurement field for both busbars, and 1 coupling field. Other important components here include the isolators, circuit

Substation Bus Bar Configurations Overview , PDF

This document discusses different bus bar configurations used in substations and provides examples of each. It begins by explaining that bus bars interconnect



CN201877684U

The utility model relates to a single-busbar sectional wiring structure for an isolating switch, which is fine in reliability, flexibility and economic performance. The technical scheme includes that the single

Circuit configurations (single line diagrams) for HV and

The most common circuit configurations of high and medium-voltage switchgear installations are



shown in the form of single line diagrams next

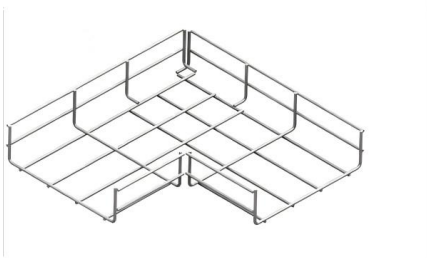


The Analysis of Single Bus-Bar Connection and its

This paper analyzes single-bus connection from the reliability, flexibility and economy point of view, then outlined the typical single-bus wiring switching operation

busbar circuit diagram

Busbar circuit diagrams can also provide valuable insight into how the system is designed. By looking at the diagram, you can identify which



What Is a Busbar: Types, Applications, & Simulation

What is an Electrical Busbar: Types, Applications, & Simulation Busbars are metallic strips or bars that function as conductors, centralizing the



What is Electrical Bus-Bar?

The various types of busbar arrangement are used in the power system. The selection of the bus bar is depended on the different factor likes reliability,



Busbar configurations , PDF

This document discusses various busbar arrangements used in substations including: - Single busbar system - Single bus with sectionaliser system - Double

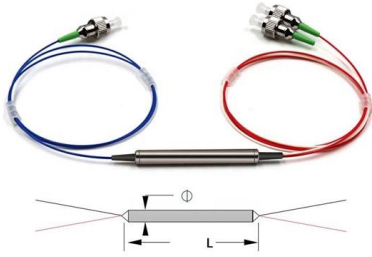
Bus Bar : Different Types, Advantages & Disadvantages

This type of arrangement consists of a single bus with a switchboard. The transformers, feeders, and generators are connected to the bus bar as shown in



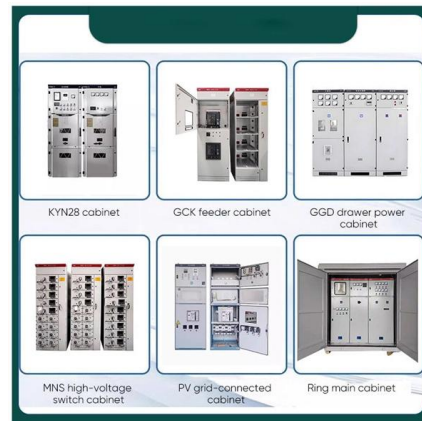
Electrical Busbar explained with SLD (Single Line Diagram)

#Busbars are the bars or strips made up of copper, aluminium which are used for the purpose of power, current distribution in electrical control panels wher



Substation Components--Part 5: Busbar Configurations

Substation Components--Part 5: Busbar Configurations Here, we provide an overview of common substation busbar configurations--Single Bus,



Types of Busbar Arrangements in Grid Stations and

The different types of busbar arrangements used in Grid stations and Substations. The Single, Mesh, Ring and Double Busbar arrangements.

Substation Bus Bar Configurations Overview , PDF

It begins by explaining that bus bars interconnect incoming and outgoing feeders and their configuration can be seen in the single line diagram. It then classifies bus





Bus-Bar Arrangements in An Electric Circuit , PDF

The document discusses different bus-bar arrangements in electric circuits including single bus-bar, sectionalized single bus-bar, main and transfer bus, double bus

Substation Busbar System Overview

Substation Busbar System Overview The document discusses different types of busbar systems used in substations: 1) Single line diagrams provide a graphical



What are busbar arrangements used in substations?

Detailed Explanation: Busbar arrangements used in substations A busbar is a metallic conductor that serves as a common connection point for incoming and outgoing lines. The

Bus Bar Arrangement in Power Station , Single Bus Bar

Bus-bars are copper rods or thin walled tubes and operate at constant voltage. We shall discuss some important Bus Bar Arrangement in Power Station and sub



Bus Bar : Different Types, Advantages & Disadvantages

The single type is used in small substations where the process of the continuous power supply is not required. An additional type is used in large substations to



Single busbar systems up to 5000 A

The two physical busbar systems are combined electrically into a single busbar system. The current carrying capacity of the busbar in this application is up to 5000 A under standard conditions.



Diagram of segmented busbar. , Download Scientific

Download scientific diagram , Diagram of segmented busbar. from publication: Application of Piecewise Catenary Method in Length Calculation of Soft Busbar in



Diagram of segmented busbar. , Download Scientific

Using the finite element modeling based on Maxwell's electromagnetic theory, the distribution of magnetic field on the closed-loop magnetic flux concentrator (MFC)



Design Guide for bus bars

A value of approximately 400 circular mils per ampere is a traditional basis for design of single conductors. Since bus bars are not round, circular mils must be



Substation single bus scheme with bus section circuit

The single bus scheme This technical course explains in details power substations using the single bus scheme with bus section circuit breakers. You



Electrical Bus System and Electrical Substation Layout

Key learnings: Electrical Bus System Definition: An electrical bus system is a setup of electrical conductors that allows for efficient power



Single busbar arrangement with bus sectionalized.

Download scientific diagram , Single busbar arrangement with bus sectionalized. from publication: New Method for OC Relay Coordination , Protection relays



CN201877684U

The utility model relates to a single-busbar sectional wiring structure for an isolating switch, which is fine in reliability, flexibility and economic performance.



Types of Busbars & Schemes - Explained with Applications

Understand Types of Busbars and how they make complex power distributions simpler in electrical power distribution,.



IP65/IP55 OUTDOOR CABINET

OUTDOOR MODULE CABINET

OUTDOOR ENERGY STORAGE CABINET

19 INCH



Busbar Basics: Understanding the Fundamentals of Electrical

Different busbar configurations, such as single-phase, three-phase, and sandwich busbars, are discussed, along with their respective advantages and use cases. The section also highlights how

Contact Us

For datasheets, pricing, or custom telecom energy solutions, please visit:
<https://koskolong.co.za>