



**Adam Tas Corridor Energy**

# **Diameter of fine-core single-mode optical fiber**





## Overview

---

Single-mode fiber optic cables typically feature a core diameter of approximately  $9\mu\text{m}$ , designed for long-distance transmission with high bandwidth. Cladding is standardized at  $125\mu\text{m}$  across all fiber types to ensure connector and splicing compatibility. The core diameter of these fibers plays a pivotal role in determining their efficiency. It provides a calculator that takes wavelength and Numerical Aperture (NA) as inputs and calculates the maximum core diameter as output.



## Diameter of fine-core single-mode optical fiber

---



### Fiber Optic Cables

CommScope designs and manufactures a comprehensive line of fiber optic cables--from outside plant to indoor/outdoor and fire-rated indoor fiber cables.

### Recommendation ITU-T G.657 (08/2024) -

This document outlines the specifications for ITU-T G.657 optical fibers, which are designed for improved bending loss performance compared to ITU-T G.652



### Optimizing Single-mode Fiber Core Diameter for Efficiency

Image Source: unsplash Single-mode fiber is a specialized optical fiber designed for high-performance data transmission. The core diameter of these

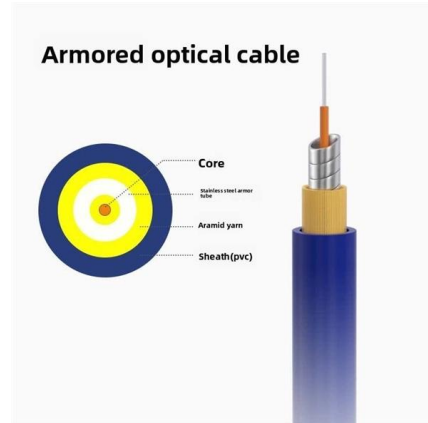


### The Ultimate Fiber Optic Cable Size Reference Chart

Single-mode fibers are known for their lower attenuation and ability to transmit signals over



exceptionally long distances. Featuring a smaller core

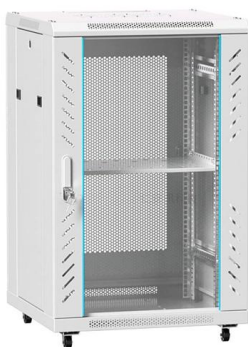
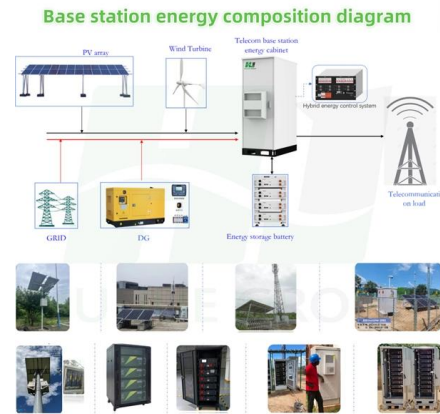


### What is Single-mode Fiber Optic and Types?

Single-mode fiber optic (SMF) is a type of fiber optic cable designed to carry light signals directly down the fiber with minimal dispersion and attenuation.

### What Are Optical Fiber Core Size, Mode Field Diameter

There are several important factors determine the optical fiber's capability to collect light and transmit it along the fiber. These factors include optical fiber's core size,



### Fiber Bragg grating

A fiber Bragg grating (FBG) is a type of distributed Bragg reflector constructed in a short segment of optical fiber that reflects particular wavelengths of light and



## Fiber-optic cable

A fiber-optic cable, also known as an optical-fiber cable, is an assembly similar to an electrical cable but containing one or more optical fibers that are used to carry



## SMF-28 Ultra Optical Fibers , SMF-28 Ultra 200 and 242

SMF-28 Ultra fiber is available in a traditional 242  $\mu\text{m}$  diameter as well as a reduced 200  $\mu\text{m}$  diameter option for smaller, lighter, high-fiber-count cables. SMF-28®

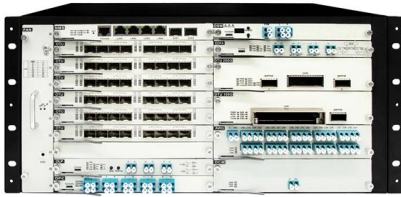
## Single-mode optical fiber - Knowledge and References - Taylor

A core of about 4-9  $\mu\text{m}$  and a cladding diameter of 125  $\mu\text{m}$  are the typical values for a silica-based single-mode optical fiber. A schematic diagram of the structure of a circular optical fiber is shown in



## Fiber Optic Cable Types - Multimode and Single Mode

Single Mode fibers are identified by the designation OS or Optical Single-mode Fiber. Single Mode cable has a much smaller core (8-9 $\mu\text{m}$ ) than multimode cable and uses a single path (mode) to carry the light.



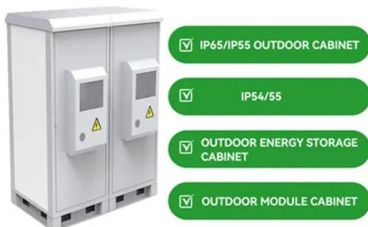
### Single-Mode Fiber. The core diameter is typically between 8 and 9

Single-Mode Fiber. The core diameter is typically between 8 and 9 microns while the diameter of the cladding is 125 microns.



### The diameter of the single -mode fiber core wire

Single-mode fiber is an optical fiber that is designed to propagate a single mode of light. It has a very small core diameter, typically less than 10 micrometers (mm), which is approximately 1/10th the



### What Is Single Mode Fiber and How Does It Work

A single-mode optical fiber has a few main parts: The core carries the light signals. The cladding wraps around the core and keeps the light inside. The



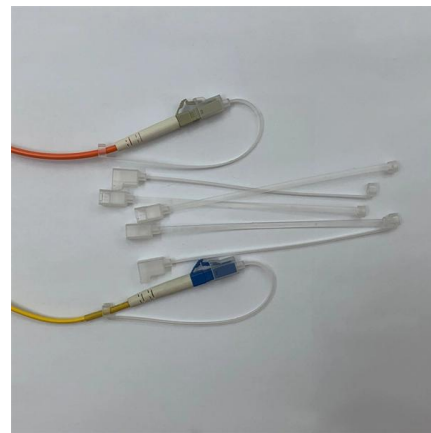


## Wholesale 6 Core Fiber Optic Cable 2k+ , Alibaba

A standard 6-core single-mode fiber optic cable has a core diameter of 8 to 10 microns and a cladding diameter of 125 microns. One for multimode fibers may have a cladding diameter of 2000 microns.

## Single-Mode Optical Fiber

Optical fibers with a smaller core allow only a single mode; larger fibers allow multiple modes. When the core diameter is around 10 m m, the optical fiber may carry only the fundamental LP01 mode (Figure



## Single-Mode Optical Fiber (SMF)

Draka Single-Mode Fiber (SMF) provides optimum performance in both the 1310 nm and 1550 nm wavelength operation ranges (including the 1565 - 1625 nm L-band), with a low dispersion in the

## Key Specifications of Single-Mode Fiber Optic Cables:

Explore the essential specifications of single-mode fiber optic cables, including core size, attenuation rates, bandwidth capabilities, and standard





## Key Specifications of Single-Mode Fiber Optic Cables

Single-mode fiber optic cables typically feature a core diameter of approximately  $9\mu\text{m}$ , designed for long-distance transmission with high bandwidth.



## Single-Mode Optical Fiber Geometries - Lightera

In this article, we'll work our way through a typical fiber specification, highlighting the importance of various single-mode optical fiber geometry specifications.



## Single-mode ytterbium-doped large-mode-area photonic crystal fiber, PDF or Rental

Abstract: Enabling Single-Mode (SM) operation in Large-Mode-Area (LMA) fiber amplifiers and lasers is critical, since a SM output ensures high beam quality and excellent pointing stability. In this paper,



## Optical ground wire

An optical ground wire (also known as an OPGW or, in the IEEE standard, an optical fiber composite overhead ground wire) is a type of cable that is used in overhead power lines.



## Optimizing Single-mode Fiber Core Diameter for Efficiency

Explore the significance of core diameter in single-mode fiber for high-performance data transmission. Learn how core diameter impacts efficiency and



## Single Mode Fiber Diameter Calculator

Calculate the core diameter of a single mode fiber based on wavelength and numerical aperture using our online calculator.



## Single-Mode Optical Fiber

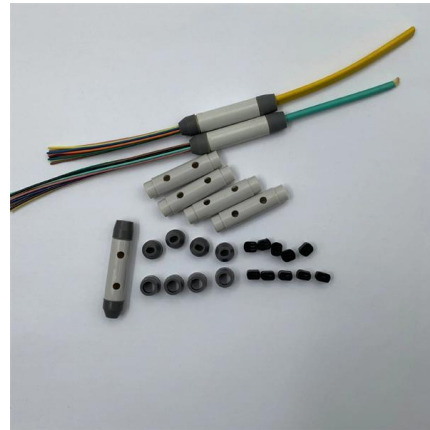
A single-mode optical fiber is composed of a thin fused silica core (diameter: 8.2  $\mu\text{m}$ ), a fused silica cladding (outer diameter: 125  $\mu\text{m}$ ), and protective coatings. Fused silica core and cladding are doped





## Multi-mode optical fiber

Multi-mode links can be used for data rates up to 800 Gbit/s. Multi-mode fiber has a fairly large core diameter that enables multiple light modes to be propagated and



## Fiber Optic Patch Cord, Fiber Optic Patch Cord Products, Fiber Optic

Inquire Add to Basket HUACHENG Customized Single Core LC SC FC ST E2000 Fiber Optic Patch Cords Quick View More Details > HUACHENG MPO/MTP 8/12/24/48/96 cores Pre-Terminated

## Contact Us

---

For datasheets, pricing, or custom telecom energy solutions, please visit:  
<https://koskolong.co.za>