



**Adam Tas Corridor Energy**

# **Dimensions of Data Center Interconnect Fiber Optic Cable Trays**





## Dimensions of Data Center Interconnect Fiber Optic Cable Trays

---



### Cable Tray Size Chart and Selection Guide

Wide trays exceeding 600 millimeters are specified for heavy industrial installations, data centers, and utility projects where large numbers of power cables or fiber optic bundles must be

### Data Center Interconnect Cabling Best Practices , Corning

The data center interconnect (DCI) application was a hot topic at the recent Optical Fiber Communications Conference and Exhibition (OFC) in San Diego. Having



### Best Practices for Fiber Optic Cabling in Data Centers

As data centers continue to grow in complexity and scale, efficient fiber optic cabling is essential for maintaining high performance, reliability, and

### Fiber Cable Trays

Our Fiber Cable Tray System is a comprehensive raceway solution for data center, enterprise, central office, and mobile switching center



applications. Designed to



### Optical Cable Tray , Fiber Guide , Ducting , Raceway

Optical Cable Tray for Data Center Aisle Containment Model:Optical Cable Tray Optical cable tray is a system designed to protect and route fiber optic patch



### Optic Fiber Cable Runway System For Data Center

Optic Fiber Cable Runway System For Data Center Code: Fiber Cable Price: Contact Dimension: 60mm,120mm, 240mm, 360mm or Customized Guarantee: 05 years



### Rack & Infrastructure Systems

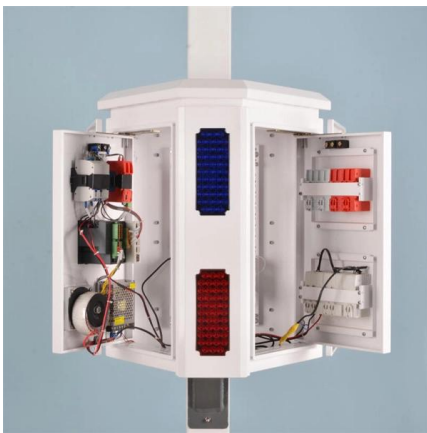
Straight channel sections support and carry cables horizontally throughout a fiber cable routing system. Available in 6.5ft lengths, channels can be cut to size and connected to additional straight sections or





## Fiber Optic Splice Trays And Patch Panel Cassettes

Optical fiber disc plays an important role in optical fiber communication system, it can protect optical fiber from the erosion of the external environment, and facilitate the



## Cable Tray Dimensions Guide: Standard Sizes, Tray

Explore standard sizes by tray type, understand width and depth limits, and see how to calculate and choose compliant cable tray sizes for real projects.

## PanView iQ (PViQ ) Fiber Trays

12-fiber MTP fiber optic adapters. The MTP connectors shall be factory pre-terminated and tested. The fiber tray shall support up to 24-ports. The drawer shall have sufficient room to accommodate fusion



## Essential Guidelines for Data Center Fiber Cabling

Discover the crucial guidelines for data center fiber cabling. Learn about its importance, best practices, and how it



### **High-Capacity Mass Fusion Splice Cabinet Rack Mount**

Our compact, high-density, indoor Mass-Fusion Rack-Mount Splice Cabinets are perfect for data center interconnection applications. They are designed to provide



### **Fiber Optic Cabling in Data Center Design and Build**

Fiber optic cabling is the circulatory system of a modern data center, enabling high-speed, low-latency data transmission between servers, storage

### **Fiber Optic Cable Tray**

Our Fiber Optic Cable Tray System is a comprehensive raceway solution for data center, enterprise, central office, and mobile switching center applications.



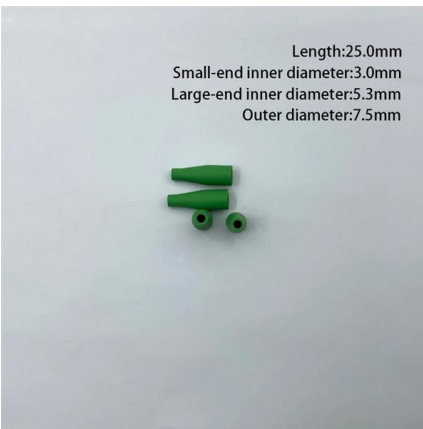


## Four Key Points for Fiber Optic Cable Installation in the Data Center

Optimize data center fiber optic cable installation with best practices, cable management, and safety considerations for optimal performance.

## Fiber Optic Cable Tray

Our Fiber Cable Tray System is a comprehensive raceway solution for data center, enterprise, central office, and mobile switching center applications. Designed to



## Data Centre Cable Trays: High-Density Cabling Guide

Let's talk about Data Centre Cable Trays and the plans needed for high-density cabling. We will cover the main problems with lots of cables, how to

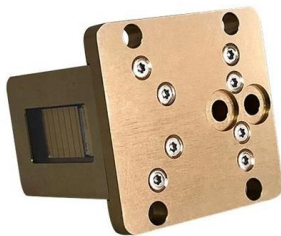
## A Complete Guide to Cable Trays Sizes and Selection

To make selecting the right size easier, we've put together a quick reference table outlining the standard dimensions you'll find in the UK and where



## Fiber Cable Trays

Fiber Cable Trays Our Fiber Cable Tray System is a comprehensive raceway solution for data center, enterprise, central office, and mobile switching center applications. Designed to route and protect



## Deploying Fiber Cabling in the Data Center

The following sections illustrate and describe in greater detail how QuickNet™ Fiber Trunks, Interconnects, Harnesses, Patch Cords, Cassettes, and Patch Panels are used in common data



## Deploying Fiber Cabling in the Data Center

Proper measuring for Panduit fiber cable assembly lengths is straightforward but does require some detailed information about the data center layout. For the most accurate length measurements, it is





## Fiber Raceway and Wire Mesh Cable Tray

Our Fiber Cable Tray System provides a complete raceway solution for data centers, enterprise networks, central offices, and mobile switching centers. It's designed to



## Data Center Fiber Cabling Topologies and Lengths

Data Center Cabling Length Data Array cable length distribution o Many thousands of 12-fiber units Distance between fiber panels in data centers 20% 18%

## Cable Pathways: A Data Center Design Guide and Best Practices

Pathways SCOTT VANDENBERG Pathways allow the placement of data center trunk cables and cross-connect cables Optical Cable Corp. between racks and cabinets. Both overhead and under floor



## Data Center Cable Tray Design Guide , PDF , Optical

Data Center Cable Tray Design Guide This document outlines best practices and engineering standards for designing and implementing structured cable and fiber



## Contact Us

---

For datasheets, pricing, or custom telecom energy solutions, please visit:  
<https://koskolong.co.za>