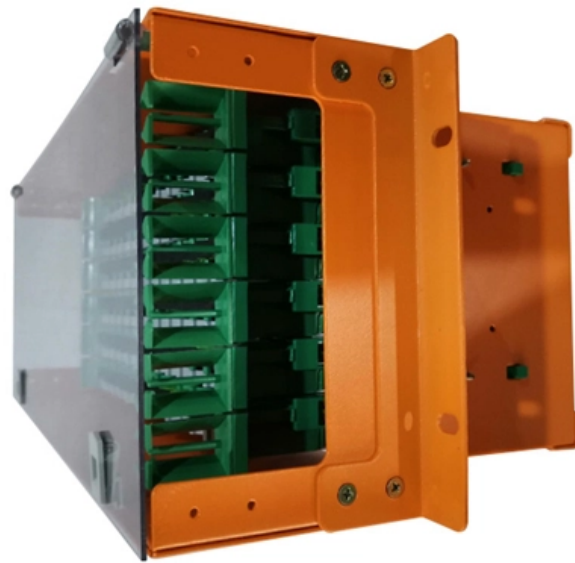




**Adam Tas Corridor Energy**

# **Dimensions of a wall-mounted dual power distribution box**





## Dimensions of a wall-mounted dual power distribution box

---



### Power Distribution Units PDUs

Rack- and Panel-Mount PDUs not only provide convenient, reliable power to equipment mounted in cabinets or on open frame racks, they can also be configured to meet a wide range of design

### TECHNICAL SPECIFICATION FOR LT DISTRIBUTION BOX

General Technical Particulars for LT Distribution Boxes : - The L.T. Distribution Boxes should be of the dimensions as per the drawing & details in the table furnished.



### Electrical Box Types & Sizes for Receptacles when

Electrical Box Types & Sizes for Receptacles How to choose the proper type of electrical box when wiring electrical receptacles ( wall plugs or "outlets") POST a QUESTION or COMMENT about how

### Energy switchgear assembly POWER DISTRIBUTION BOARDS

Can be combined in all directions +Six box sizes can be freely combined in all directions and can



also be used as individual enclosure. + The combinable enclosure system is ideally suited for the quick and



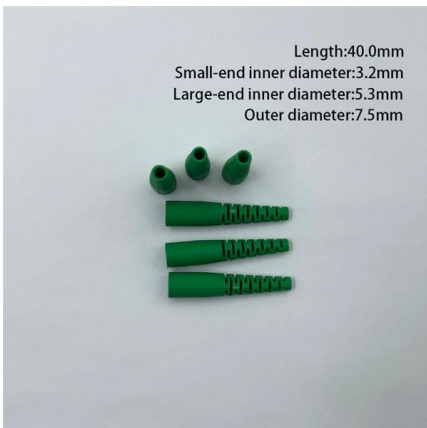
### Distribution Box

Plastic Electrical Box, also known as a consumer control unit or electricity control unit. It is a device that is a type of distribution board that helps in protecting



### What is the Ideal Installation Height for a Distribution Box

General Guidelines for the Installation of Distribution Box Standard Height Recommendations Follow height rules when installing a distribution box. Wall



### The installation requirements for the distribution box

A distribution box is the heart of any electrical system. It takes the incoming power and safely distributes it to different circuits throughout your



## Power Distribution Equipment

Mini Power-Zone: Mini Power-Zone combines a transformer and circuit breaker distribution panel into a single wall mounted substation. The substation includes a primary main circuit breaker, sealed step

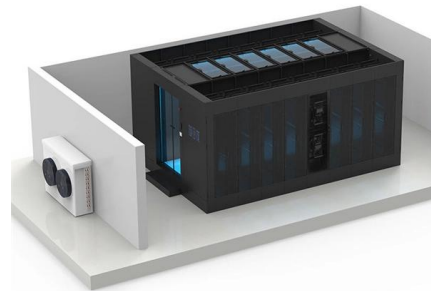


## Power Distribution Units (PDU) Information

Vertical mount Wall mount Hardwire mount Outlet Configurations The number of outlets in the power strip or power distribution unit (PDU) also refers to the

## Standard Electrical Enclosure Sizes: Chart, Dimensions

Electrical enclosure sizes are not universal, but most manufacturers follow common size families. This guide explains typical wall-mount and floor



## Common Electrical Enclosure Sizes

Explore the wide range of common electrical enclosure sizes, including small, medium, large, wall-mounted, and specialized enclosures, and understand



## Electrical Box Dimensions: Find the Right Size for Any

This guide explains standard electrical box dimensions by type, compares common sizes, and helps you select the right box for residential,

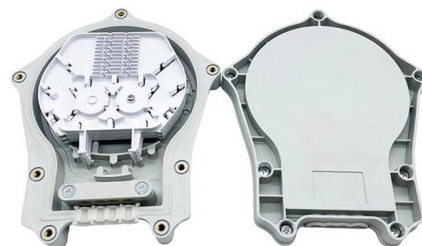


## Standard Electrical Enclosure Sizes: Chart, Dimensions & Selection

Electrical enclosure sizes are not universal, but most manufacturers follow common size families. This guide explains typical wall-mount and floor-standing dimensions, how to read catalog

## Electrical Box Dimensions Manufacture

These large boxes give you the flexibility to mount multiple breakers, switches, or connectors side by side. Here's a quick table showing the standard





## Distribution Box Guide: Types, Components & Solutions



Understand distribution boxes (DB boxes) in 5 minutes. Learn about types, components, functions, and uses. Find the perfect DB box for your needs.

### MNS® Low Voltage Distribution Board and Power Cabinet

For wall mounted, the flange is located on the external side of the enclosure, and there is a wall mounted slot on the back of the enclosure. For wall embedded, the flange is located on the internal side of the



### Outdoor Electrical Distribution Box Specifications: NEC

Complete specification guide for outdoor electrical distribution boxes covering NEC Article 312 requirements, NEMA ratings, sizing calculations, and

### Elecnova: Power Db Box Cabinet, Powercon Distribution

Unlock unparalleled safety and efficiency with Elecnova's latest Power Db Box Cabinet and Powercon Distribution Box. Optimize space with our sleek, wall



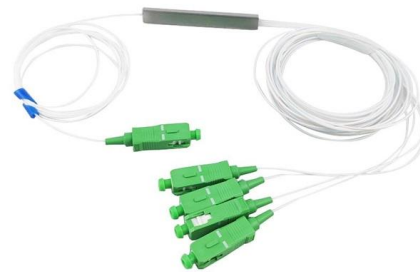


## WALL MOUNTED CABLE DISTRIBUTION CABINET

The wall mounted distribution cabinets are designed for easy installation. The metal bars can accommodate either connection or disconnection modules. The Cable glands in various sizes and

## Distribution Boxes Types - The Complete Guide

The power distribution boxes deliver electricity from the main electrical main to other circuits. Several distribution boxes are designed for specific use in



## Modular Distribution Boards » Majas Switchgear Limited

Modular distribution boards built to BSEN 61439-2, offering flexible configurations, high performance protection, and reliable solutions for industrial use.

## Power Distribution Boxes Explained Simply

Learn what a power distribution box is, how it works, key components, types, and why it's vital for safe and efficient electrical systems.



### Huijue engineering specific Fiber optic

HJ GROUP offers a wide variety of product types for you to choose from.



## Power Distribution Catalogue

your Power Distribution enclosure requirements  
The nVent HOFFMAN Power System is specifically developed for power distribution panels for indoor applications, and is based on wall mounted and

## Power Distribution Boxes Explained Simply

Discover the essentials of a Power Distribution Box--how it works, key types, benefits, and tips to ensure safe, efficient electrical power management.



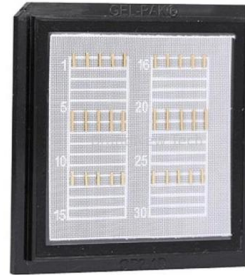
## Distribution Boards

ABB is driving progress for utilities through providing solutions for electrical distribution, and helping make a safer, more productive, and more efficient environment



## Distribution Boards & Consumer Units

Distribution boards, together with modular ABB system pro M Compact protection devices and Modular Din Rail Components, can be used for many applications in electrical building installation. Solutions



## DB BOX(Electrical Distribution Box): Everything You

Mounting: The box should be securely mounted to a wall or other surface, ensuring it won't budge under pressure. Wiring: Next, the electrical

## Power Distribution Catalogue

Body: 1.4 mm for enclosures with a depth of 210 or 260 mm / 1.5 mm for enclosures with a depth of 300 or 400 mm, or if a height or width is 1000 mm or greater. Door: 1.5 mm / 2 mm for enclosures with a



## Wall-mounted distribution box with 1 CEE and 2 socket outlets with

Wall-mounted distribution box in compact design, ideal for installation in factory halls or workshops. The circuit breakers for the protection of the socket outlets are ready-wired for connection on terminals



## Contact Us

---

For datasheets, pricing, or custom telecom energy solutions, please visit:  
<https://koskolong.co.za>