



**Adam Tas Corridor Energy**

# **Distance between Level 3 Distribution Box and Tools**





## Overview

---

The minimum depth of clear working space for electrical equipment for each of the 3 conditions is stated in NEC Table 110. Hierarchical and Branch Circuit Distribution (1) Power distribution from the primary main distribution board (distribution cabinet) to secondary distribution boards can be branched; that is, one main distribution board may supply. Phase-to-ground voltage refers to the voltage difference between an energized conductor and the ground, while phase-to-phase system voltage represents the voltage difference between two energized conductors. Both of these voltages are considered when calculating the required separation distances. These standards have been agreed by CENELEC (European Committee for Electrotechnical Standardisation) and also form part of the.



## Distance between Level 3 Distribution Box and Tools

---



### Minimum Approach Distance Chart

The minimum approach distance chart defines safe working distances to prevent arc flash injuries. Based on NFPA 70E and OSHA standards, it helps protect

### The installation requirements for the distribution box

Choosing the right distribution box isn't one-size-fits-all. You need to consider where it will be used, how much power it needs to handle, and how well



### How to Install a Distribution Box--A Comprehensive

Whether you are an electrical contractor or a construction brigade, knowing how to properly and safely install distribution boxes is the basis of

### Optimal Distance from Septic Tank to Distribution Box

Discover the ideal distance from a septic tank to a distribution box, including guidelines, facts,



and real owner insights.



## Distance Between Distribution Box and Septic Tank Explained

The distribution box (D-box) is another critical element that directs the effluent from the septic tank to the drain field. Understanding the proper distance between the septic tank and the



## Understanding Septic Tank to Distribution Box Distance

The distribution box serves as a crucial junction point, directing effluent from the septic tank to various drain field lines. Understanding the appropriate distance between these two



## Safe Clearances for Electrical Equipment: Working

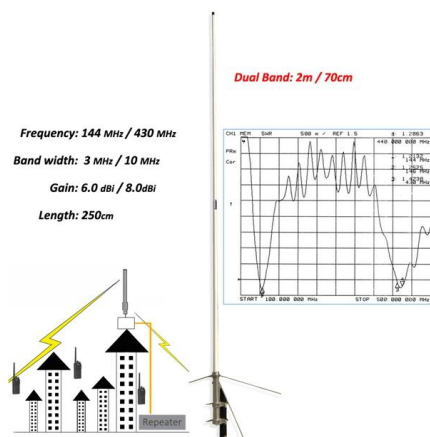
Note that sufficient working space is relative to the clear space in front, between, and above electrical equipment. There are different requirements for a single row of





## What hand and power tools are used to install a

Install distribution box systems with essential hand tools like screwdrivers and pliers, plus power tools such as drills and impact drivers for efficient setup.



## What conditions should the installation of low voltage

The distance between distribution box and switch box shall not exceed 30m. The level interval between switch box and mobile power consumption machine and

## Annex I

However, particular solutions may be developed for local problems, when the emission levels are higher than previously specified or the immunity is lower. They must be treated locally on a case by case



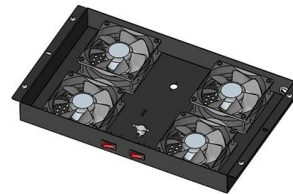
## How to confirm whether the installation location of the

The electrical distribution box plays a vital role in the power system. It is responsible for distributing electricity to various circuits and equipment.



## How many distance from ground when install distribution box

The total distribution box and switch box should be equipped with leakage protector, and the distance between distribution box and switch box, switch box and electrical equipment should



Equipped with a removable **Mounting Plate** inside the enclosure, enabling customized drilling and secure component mounting.

## Installation guide for hazardous areas

Conductors of intrinsically safe circuits can only be placed in the same raceway or cable tray with non-intrinsically safe circuits when the intrinsically safe circuits are separated by a distance of 50 mm (2

## electrical

How far off the floor should my circuit breaker box be? I'm changing from a 100 to a 200 amp. The lead in wires are underground and come into the bottom of box making them too short to





## The installation requirements for the distribution box

Learn how to install a distribution box safely and correctly. Covers wiring, placement, standards, and expert tips for a compliant setup.



## NEC Article 110.34: Electrical Room "Basics"

These distances indicate space that must be clear to the floor. The chart above illustrates the varying requirements for the depth of the working space in the



## Technical Guidance Note 287

Impressed voltage the high-voltage equipment. These impressed voltages are caused by inductive or capacitive coupling between the high-voltage equipment and nearby conducting materials and can



## Cable Distribution Box Layout: 10 Industrial Strategies

Optimize your cable distribution box layout for safety and efficiency. Learn industrial best practices using Chuanli's IEC-standard outdoor and custom boxes.



### Essential Rules for 3-Level Electrical Distribution

The distance between a distribution board and a switch box shall not exceed 30 meters. The horizontal distance between a switch box and its controlled fixed

### 1926.403

Distances shall be measured from the live parts if they are exposed, or from the enclosure front or opening if the live parts are enclosed.



### Low-voltage distribution networks

In European countries the standard 3-phase 4-wire distribution voltage level is 230/400 V. Many countries are currently converting their LV systems to the latest IEC standard of 230/400 V



## The Meaning and Function of Primary, Secondary, and Tertiary

Differences Between Primary, Secondary, and Tertiary Distribution Boxes  
Primary Distribution Box: Designed specifically for construction sites, conforming to relevant electrical codes.



### How to determine the size, installation method and

The distance between distribution box and switch box shall not exceed 30m. The horizontal distance between the switch box and the fixed electrical equipment

### Size determination, installation method and wiring mode

The distribution box is the central hub of the home circuit and the general control of our daily power consumption. It is an indispensable electrical equipment. If there



## Contact Us

---

For datasheets, pricing, or custom telecom energy solutions, please visit:  
<https://koskolong.co.za>