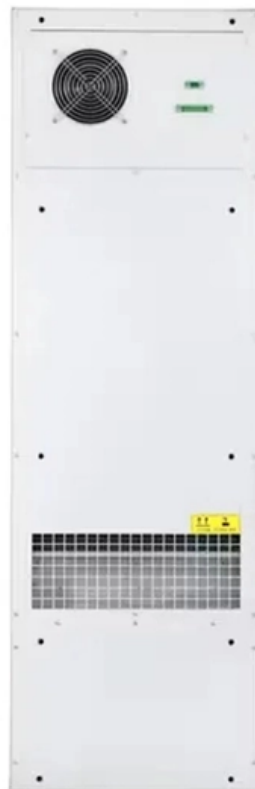




Adam Tas Corridor Energy

Distance between Nordic Trough Cable Tray Factory and





Distance between Nordic Trough Cable Tray Factory and

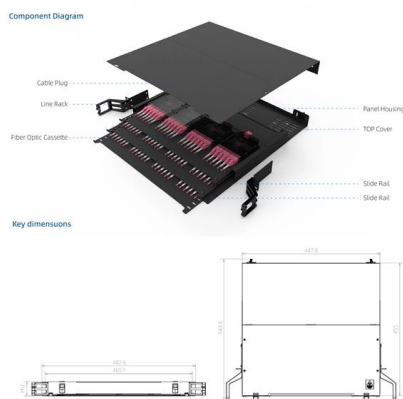


TERMS AND DEFINITIONS

TERMS AND DEFINITIONS Cable Tray System
Cable tray system is a unit or assembly of units or sections and associated fittings forming a rigid structural system used to hold up the cables and also

AshwinD24's gists · GitHub

GitHub Gist: star and fork AshwinD24's gists by creating an account on GitHub.



Cable Tray Segregation and Clearance Rules

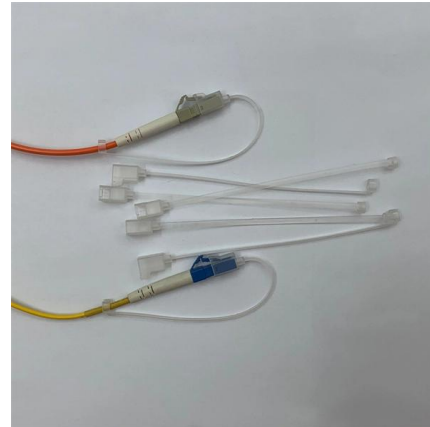
This document discusses cable segregation rules for different cable management systems. It provides guidelines for minimum separation distances between cable

2 0 0 5

Ventilated trough cable tray is often used when the specifier does not want to use ladder cable tray to support small diameter multiconductor



control and instrumentation cables.



REINFORCED VIRGIN PVC TRUNKING

Superior Crush Resistance







| | |
|--|--|
|  37.6MPA Tensile Strength |  2856MPA Elastic Modulus |
|  9.8KJ/M² Impact Strength |  1.54G/CM Density |

Cable Tray Today: An overview , Cable Tray Institute

The face of cable tray is changing to meet today's market needs A few short years ago, cable tray was a "smoke stack" product, used primarily in heavy industrial facilities to support power cables. Today it

Eurostrut Cable Trays , cable tray, cable route and

Cable trays for industrial and marine use. Includes distribution trays, cable routes and NATO-type models. Request a quote directly via our webshop.



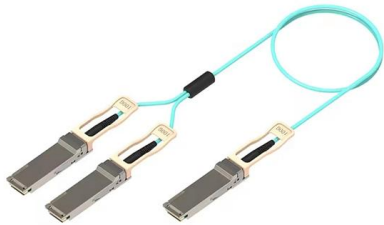
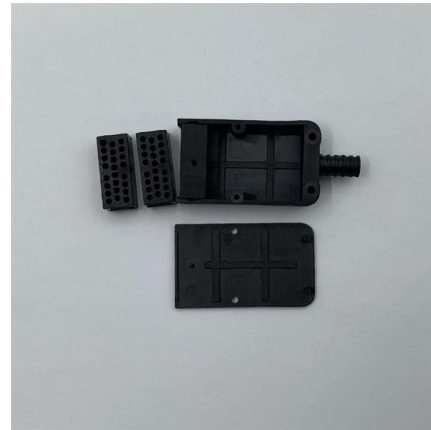
Cable Tray Spacing Standards for Installation and Safety

Discover the essential cable tray spacing requirements for safe and efficient installation. Learn key standards, horizontal and vertical spacing, and more.



B-Line series Cable Tray Design Considerations

Is your cable tray system optimized for safety, dependability, space and cost savings? Cable tray (or cable ladder) systems are a popular alternative to electrical conduit systems, as they have an



Cooper B-Line

Where cable tray wiring systems with current carrying conductors are installed in a dust environment, ladder type cable trays should be used since there is less surface area for dust buildup than in

Nordic Wire Tray , Smart Cable Trays and Cable

Our product catalogue NWT Nordic Wire Tray becomes Nordic Wire Tray. New name, new look, same Nordic quality We continue to drive innovation in cable



Cable Tray Installation and Types Guide

The document discusses cable trays, which are structures used to securely support and distribute cables. It describes the different types of cable trays, including



B-Line series Cable Tray Design Considerations

For ladder or ventilated trough trays, the total sum of the cross-sectional areas of all the cables to be installed in the cable tray must be equal to or less than the allowable cable area for the tray width, as

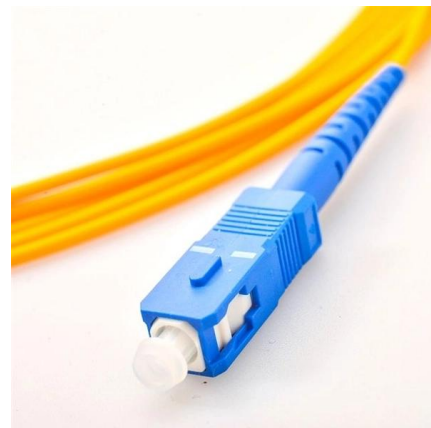


Cable Tray Raceway Fill and Load Calculations

Resources For Electrical & Electronic Engineers
Cable Tray Raceway Fill and Load Calculations
Cable tray / raceway is integral part of any cable management

Complete cable tray manual for electrical engineers and

Complete cable tray manual for electrical engineers and designers (on photo: power cable management ladder tray systems assembled aluminum cable tray ladder





Cable Tray Spacing Standards for Installation and Safety

The Importance of Cable Tray Spacing in Electrical Infrastructure Cable tray spacing is a critical aspect of electrical infrastructure, influencing both



Our Range of Cable Trays and Accessories , Nordic Wire Tray

For the X-Tray cable laying system, every detail is carefully thought out so that you, the customer, will notice the difference. X-Tray also has the market's longest bracket distance, which facilitates



Cable Tray Installations Can Be Tricky: Definitions make

Many electrical professionals believe that cable trays are raceways. Based on the definition, this couldn't be further from the truth.

ITER Cabling Handbook

The minimum distance from the trench floor to the lower cable tray must not be less than 200 mm and cable tray must not be located deeper than 400 mm from the trench ceiling, as shown in Fig. 5.7.2.



Cable tray

In the electrical wiring of buildings, a cable tray system is used to support insulated electrical cables used for power distribution, control, and communication. Cable



Technical Guidelines for Cable Tray Installation and

Select the tray width and thickness according to the number and weight of cables. Ensure mechanical strength is sufficient to prevent deformation or failure under



Cabling Standard

The document provides guidelines for cable trays and wireways used to route, support and protect telecommunications cabling. It defines different types of cable





Distance between Cable Trays

With cables less than 50mm in diameter in a tray, the minimum vertical clearance is 150mm between trays. With cables greater than 50mm in diameter in a tray, the minimum vertical



Cable Tray Technical Guide A practical guide to product selection and

Cable tray length is selected based on the load to be supported, the distance between the supports (also referred to as the span), and handling and installation constraints.

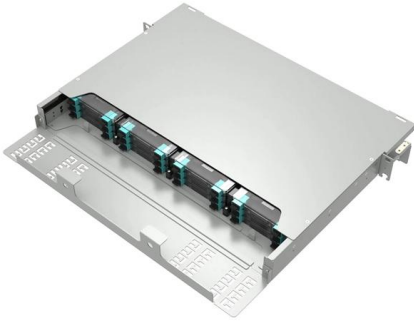
Cable Tray/Conduit Spacing , Eng-Tips

A lot of people would run everything in the same conduit, if not the same cable and often get away it. I'd be more concerned about the type of cable I was using than the conduit spacing - at



Best practice guide to cable ladder and cable tray

Cable ladder and cable tray systems The following recommendations are intended to be a practical guide to ensure the safe and proper installation of



Section 17.pdf

2.1 Cable tray systems shall be of the design of one manufacturer and shall be designed so that there are no burrs, projections, or sharp edges to damage cable insulation.



Contact Us

For datasheets, pricing, or custom telecom energy solutions, please visit:
<https://koskolong.co.za>