



Adam Tas Corridor Energy

Distribution Box Bending Standard





Overview

6 (A) provides minimum wire-bending space dimensions at terminals and minimum width of wiring gutters. 6 (A) applies where conductors do NOT enter or leave the enclosure through the wall opposite their terminals. Box offsets can make or break the clean look of your conduit run — especially when you're lining up to a panel, J-box, or device. In this video, I walk you step-by-step through how to bend perfect box offsets every time. It discusses the definitions and formulas for calculating junction box length and width based on conduit sizes and configurations. The supplier shall submit Type Test Report of the Isolator for approval of Employer before commencement of supply.



Distribution Box Bending Standard

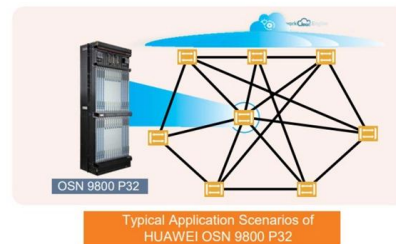


Distribution Box

Our distribution boxes are perfect for industrial environments, catering to automation, robotics, and processing facilities. They provide cost-effective solutions through automated dispensing and

Wire-Bending Space

Explore a searchable database of US construction and building code. Code regulations are consolidated by state and city for easier navigation.



Fiber Optic Cable Bend Radius or Diameter

Bend Radius or Diameter? Bending of a fiber optic cable can damage the cable if the curvature of the bend is too small. Damage may not always be obvious, like a

Minimum Wire Bending Space

Minimum wire bending space at terminals and minimum width of wiring gutters Bending space at terminals shall be measured in a straight line



from the end of the lug or wire connector (in the



Microsoft Word

Do not exceed 90 meters total length for a given conduit run to be used for distribution cabling (from outlet box to telecommunications room), including intermediate conduits and junction boxes.

TECHNICAL SPECIFICATION I.R.O. 63,100,160 & 315 KVA L.T.

Distribution Boxes shall have Isolator (Switch Disconnecter) on incoming circuit and Porcelain CUTOUT fuse base disconnecter on outgoing circuits with necessary interconnecting Bus Bars.



Requirements And Specifications For Installation Of

In flammable and explosive environments, explosion-proof distribution boxes should be selected and explosion-proof treatment should be carried out.



ENGEL at K 2025

ENGEL at K 2025 together with WINTEC Overview of exhibits & expert corners Solutions for digitalisation & more More info here!



Sheet metal box roll forming machine for distribution

Machinery for production electronic Sheet metal box roll forming machine for distribution board & modular box making. Equipment for outdoor/indoor

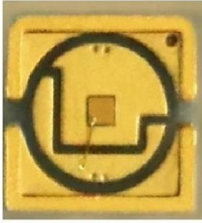
Pullbox sizing , PDF

This document provides information on sizing junction boxes and determining conductor bending radii according to NEC standards. It discusses the definitions and formulas for calculating junction box



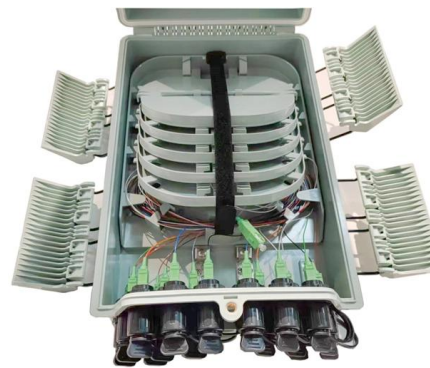
Automatic Power Distribution Box Production Line

Under the frictional damping action of the forming roller and pressure roller, after entering the bending part at a linear speed of 0-13m, the box is cut and bent as



Test Method for Static Minimum Bending Radius for Coaxial Trunk,

This test procedure is to be used for initially establishing or alternatively verifying the minimum static bend radius for coaxial distribution cable products. This procedure establishes the methodology to be



DISTRIBUTION DESIGN STANDARD

For customer service conduit entering a secondary box, a 90 degree elbow with a 24" radius for conduits is required. The mounting height of the first standoff bracket (bottom) shall be 12" above final grade.

Snap-on Authentication

Password undefined LOG IN Update / Reset Password [click here](#)





SPECIFICATION STANDARD PATHWAYS 27 05 28



Install pull boxes as required to meet TIA/EIA standards where conduit runs exceed 100 feet and/or bend exceed a total of 180 in a section of conduit. Size pulls boxes to meet the requirements of the

Minimum Wire Bending Space

Bending space at terminals shall be measured in a straight line from the end of the lug or wire connector in a direction perpendicular to the enclosure wall.



Appendix C. Wire bending space at filed wiring terminals

Wire bending space at filed wiring terminals Table C.1. Minimum bending space, terminal to wall, according to UL 508a - Rev. 2007-2018 (25 Wire Bending Space) f the enclosure toward which



Distribution materials specification- construction standard for

Provides construction standards and specifications for materials used in underground distribution networks.



Grounding System Installation Standards for Distribution Boxes and

By understanding the deeper principles behind grounding standards, avoiding common installation pitfalls, and insisting on certified materials from reputable suppliers, you're not just following



How To Make EMT Box Offset Bends

A standard offset bend maintains a uniform conduit path, while a box offset specifically adjusts to mount into a box, necessitating precise



Size determination, installation method and wiring mode

The distribution box is the central hub of the home circuit and the general control of our daily power consumption. It is an indispensable electrical equipment. If there





Table 312.6(A) Minimum Wire-Bending Space at

NEC Table 312.6 (A) provides minimum wire-bending space dimensions at terminals and minimum width of wiring gutters. Table 312.6 (A) applies where conductors



IEC Standard for Power Distribution Board Design and

Designing a power distribution board is not just about placing components inside a metal box. It requires a deep understanding of international

The installation requirements for the distribution box

Learn how to install a distribution box safely and correctly. Covers wiring, placement, standards, and expert tips for a compliant setup.



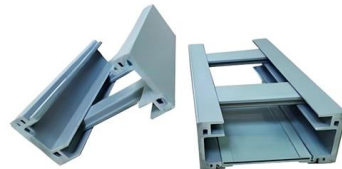
Overhead Distribution Construction Standards

COMPATIBLE UNITS FOR REINFORCING DISTRIBUTION WOOD POLES FOR POLES LARGER THAN APPEARING ON THIS TABLE SEE TRANSMISSION WOOD POLE REINFORCING



1. An Ultimate Guide for Metal Distribution Boxes

1) Metal Distribution Boxes Constructed from steel, aluminum, or cast iron, metal distribution boxes are highly durable and resistant to mechanical damage. Ideal

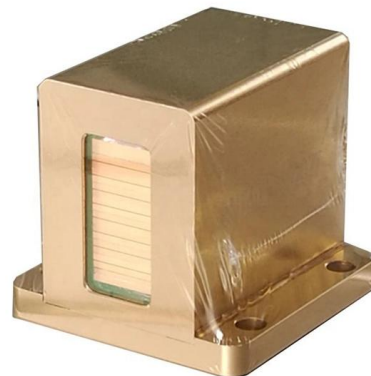


A comprehensive understanding of distribution box

At Timelec, we provide customized, high-quality distribution boxes that meet international safety standards, with a strong focus on durability,

Apprentices -- Let's Bend A Standard Box Offset

In this video, I walk you step-by-step through how to bend perfect box offsets every time.





Contact Us

For datasheets, pricing, or custom telecom energy solutions, please visit:
<https://koskolong.co.za>