



Adam Tas Corridor Energy

Distribution box and main grounding line





Distribution box and main grounding line



Practice for good grounding and bonding a home wiring

Bonding and grounding explained All home electrical systems must be bonded and grounded according to code standards. This entails two tasks: First,

The Basics of Substation Grounding: Parts of the

A substation grounding system has two main parts: the grounding network and the connection to the earth. The grounding network bonds all



Distribution System Grounding

Summary Good system grounding provides the path for normal load and fault currents while maintaining load and controls temporary overvoltages. Good equipment grounding ensures

Introduction to Power Distribution & System Grounding

ISOLATED GROUND An isolated ground is also referred to as a "technical ground" or "isolated



Nine Recommended Practices for Grounding

Grounding and bonding are the basis upon which safety and power quality are built, and they provides low-impedance path for fault current.



Service Panels

The service panel houses incoming cables from the meter as well as the breakers and wires that distribute electricity to individual circuits. At the service, neutral

Grounding in Power Transmission and Distribution Networks

Power transmission and distribution systems are earthed for electric shock and fault protection. This chapter presents the principles and practices of grounding for power systems. An earthed power



Distribution Box Installation: A Complete Guide to Safe

The distribution box, often referred to as a breaker box, fuse box, or electrical panel, is a critical component of any electrical system. It acts as the central hub for



Grounding Basics

Ground wires (equipment grounding conductors) connect to every part of the electrical system that could possibly become energized--metal boxes,



How To Run A Ground Wire To An Electrical Panel Box

Your service panel's ground wire prevents a line fault from becoming a shocking experience. By shunting excess line voltage back to the panel's neutral pole, the ground current

System Grounding

Knowledge of the various types of system grounding and performance characteristics is critical when designing or operating an electrical system. The voltage, system arrangement, loads connected, and





Correct Connection Method Of Grounding Wire Of

Open the distribution box and find the position marked with the grounding plate or PE letter. This position is the connection point of the grounding



Understanding Types of Grounding Systems in Electrical

Grounding systems are fundamental to electrical network design, and selecting the right type is crucial for ensuring safety, reliability, and regulatory



GROUNDING OF UTILITY AND INDUSTRIAL DISTRIBUTION

In this workshop, we will demystify the concepts of grounding as applicable to utility networks and industrial plant distribution systems as well as their associated control equipment.

Grounding Practices in Power Distribution Systems

The installation of grounding methods for transmission lines is absolutely necessary in order to guarantee the safety, dependability, and effectiveness of power



Webit Cabling

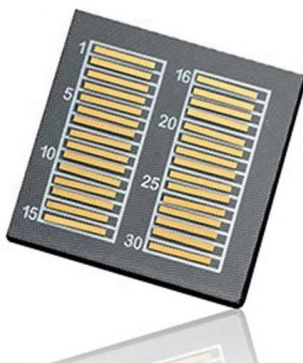
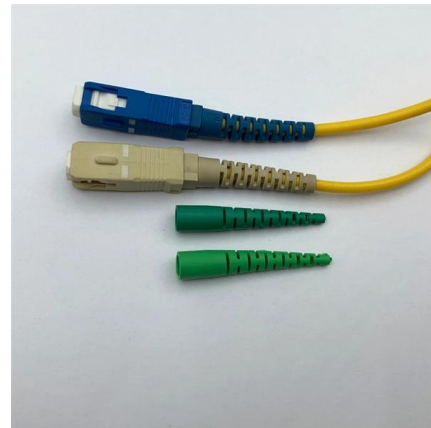


Protective grounding requirements for transmission and distribution lines

Introduction to protective grounding This technical article covers protective grounding requirements for steel tower and wood

Grounding in Power Transmission and Distribution Networks

Power transmission and distribution systems are earthed for electric shock and fault protection. This chapter presents the principles and practices of grounding for power systems.



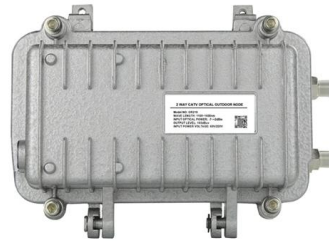
DISTRIBUTION BOX

Each DISTRIBUTION BOX and controller must be grounded. On the US market, a 5.26 mm² (10 AWG) ground wire must be used, and in all other markets a 6 mm² must be used.



How to Wire a Home Distribution Box

How to Wire a Home Distribution Box - Step-by-Step , Distribution DB box wiring diagram
Welcome to our channel! In this video, we'll walk you through



Grounding System Installation Standards for Distribution Boxes and

Whether you're a seasoned pro or just starting out, this comprehensive guide will give you practical insights into proper grounding techniques, with a special focus on how selecting quality materials

GROUND GRID SPECIFICATIONS

PURPOSE AND SCOPE IPMENT, STRUCTURES, ETC. IN ELECTRICAL STATIONS INCLUDING TRANSMISSION AND DISTRIBUTION SUBSTAT GROUNDING OF NON-CURRENT CARRYING



Grounding Methods and Best Practices for High Voltage Transmission

This paper aims to provide a general overview of transmission line design, the potential risks associated with transmission systems, and common grounding methodologies for these systems, particularly in



Contact Us

For datasheets, pricing, or custom telecom energy solutions, please visit:
<https://koskolong.co.za>