



**Adam Tas Corridor Energy**

# **Distribution box repeatedly connected to neutral**





## Distribution box repeatedly connected to neutral

---



### How to Check for an Open or Loose Neutral

How do I Check for an Open Neutral? You may have heard that checking for voltage on neutral with respect to ground is a good way to test for a

### Why does this receptacle have the ground tied to the

The ground and neutral are only supposed to be tied together at the main panel. In this case, instead of only the neutral carrying current, both the ground and neutral



### Types of neutral earthing in power distribution (part 1)

1. Ungrounded Neutral Systems In ungrounded system there is no internal connection between the conductors and earth. However, as system, a

### A question about neutrals in a junction box with multiple circuits

If you need to break that neutral connection, let's say to tie in another branch on to one of those



circuits or to delete something from it, you would have to de-energize all of those circuits in order to safely



### How to install the neutral wire in the distribution box?

The installation of the neutral wire in the distribution box is a crucial part of the electrical system, which is related to electrical safety and system stability.

### Neutral Fault Causes, Effects, Examples, Explanation

Neutral wire also be damaged by physical contact, Corrosion, long-time use, etc. The neutral wire of a distribution line may be damaged by the



### Understanding Circuit Breaker Wiring Configurations in

Correct wiring methods for circuit breakers within distribution boxes are fundamental to ensuring electrical safety and compliance with established codes.



## Understanding Neutral, Ground, Grounding, and Bonding

The ground and neutral wires are connected at the main panel ONLY NEC 2008 states that the neutral and ground wires should be "bonded" together at the main



## Is it normal for neutral to be connected to live in a

White/black/blue (usually used for neutral) wire connected to live to go to the light switch, then black/red/brown came back to the light as a switched live.



## Wiring Of Neutral Block In Distribution Box

Whether the neutral line of each circuit in the distribution box needs to be connected to the neutral block does not depend on the neutral block, but depends on the



## How to Wire a Home Distribution Box

The above mentioned electrical wiring accessories and protective devices are used to control and distribute electric supply (safely to connected



## Why are Neutral and Ground Wires Bonded in a Subpanel?

Why Do Neutral and Ground Conductors Need to Be Bonded in the Main Panel? According to NEC Article 250, both the neutral and ground wires must be

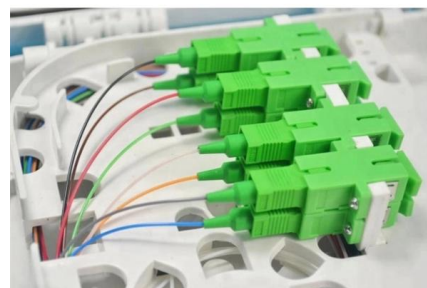


## Causes of Neutral-to-Ground Voltage and Proper Remediation Methods

Power Distribution Basics and N-G Voltages  
Modern power distribution within a home or commercial building located in North America consists of LINE, NEUTRAL, and GROUND. The LINE wire is

## Dangers of bonding grounds and neutrals

We only want to do it at one point so we don't have neutral current taking a parallel path through ground wires and metal conduits etc. That's correct with one general exception. Neutral





## Understanding the Role of the Neutral Wire

Discover the importance and function of the neutral wire in electrical systems. Learn what does the neutral wire do in this informative blog post.

### Can two circuits share a neutral?

If two separate circuits fed from separate supply lines share a neutral, the main danger is when the neutral becomes disconnected. If this happens, voltage will



### Distribution of the MV neutral conductor right to the loads

MV distributed neutral conductor 4-wire systems are characterized by distribution of the MV neutral conductor right to the loads. This type of distribution

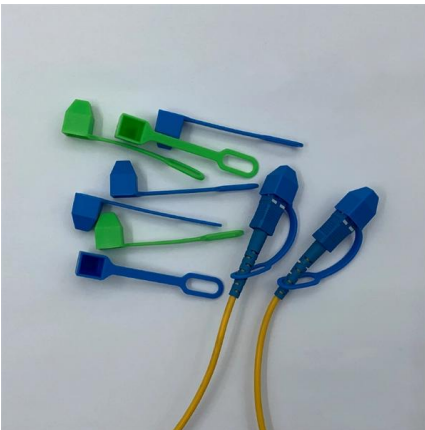
### The Importance of the Neutral Wire in a Breaker Box

The neutral wire in a breaker box plays a crucial role in the safe distribution of electricity throughout a building. It is an essential component of the electrical system and is connected to the grounding



## Quora

Hier sollte eine Beschreibung angezeigt werden, diese Seite lässt dies jedoch nicht zu.



## How Electricity Gets from the Meter to Your Breaker Box (Keeping the

Learn how electricity travels from your home's meter to the breaker box. Discover the role of L1 and L2 buses, the Neutral bus, Ground bus, and ground bonding in your home's electrical system in this

Waterproof and dustproof, reliable and safe

The outer classic sink design allows the sealing ring of the cabinet and door to be seamlessly compressed without leaving a trace of gaps



## Neutral Fault Causes, Effects, Examples, Explanation

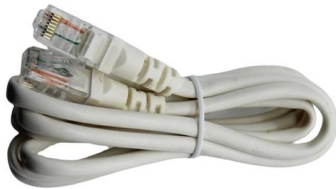
In an electrical system, the neutral fault refers to a condition where the neutral conductor of a three-phase or single-phase electrical circuit becomes





## Electric system neutral wire loss leads to shocked homeowner

This document describes a case history of loss of the neutral connection in an electrical panel combined with failure to isolate the neutral and ground buses leading to an electrical shock.

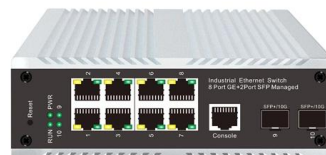


## Neutral system - Single earthed or Multi earthed?

The neutral system In distribution system three phase load is unbalance and non linear so the neutral plays an very important role in distribution system. Generally,

## What Is a Neutral Bus Bar and How Does It Work?

Demystify the neutral bus bar. Learn its role in current return, proper wiring, and the crucial safety distinction between neutral and ground connections.



## Understanding Your Breaker Box: How L1, L2, and Neutral Work

Learn how L1 and L2 from your electrical service power your breaker box, the role of Neutral and Ground, and why balancing electrical loads between L1 and L2 is essential.



## Contact Us

---

For datasheets, pricing, or custom telecom energy solutions, please visit:  
<https://koskolong.co.za>