



Adam Tas Corridor Energy

Distribution boxes require wires to be bent





Overview

What Is a Distribution Box?

A distribution box, also known as a power distribution unit, is a critical component in any electrical system.



Distribution boxes require wires to be bent

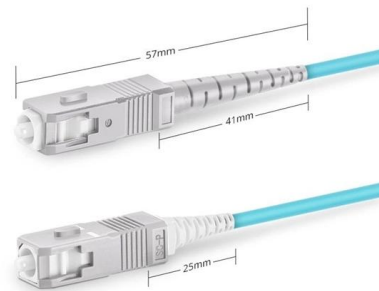


How to Install a Distribution Box--A Comprehensive

Whether you are an electrical contractor or a construction brigade, knowing how to properly and safely install distribution boxes is the basis of

Distribution Box: Types and Functions , Axis-Electricals

A distribution box ensures that electrical supply is distributed in the building, also known as a distribution board, panel board, breaker panel, or electric panel.



Simplex SC UPC



Understanding Distribution Boxes: A Comprehensive Guide

Learn what a distribution box is, its types, and how to choose the right one for your project. Includes clear examples and expert tips.

Distribution Box Installation: A Complete Guide to Safe

Mount the distribution box in a convenient, accessible location that complies with local



electrical codes. Typically, this is in a basement, utility room, or garage.



An Ultimate Guide for Metal Distribution Boxes

Distribution boxes are an essential part of every home or building's electrical system. These enclosures house wiring connections for various applications such as

What Is an Electrical Distribution Box? A Complete Guide

An electrical distribution box routes power, prevents overloads, and keeps wiring organised--essential for safe, efficient home and industrial setups!



- IP65/IP55 OUTDOOR CABINET
- OUTDOOR MODULE CABINET
- OUTDOOR ENERGY STORAGE CABINET
- 19 INCH

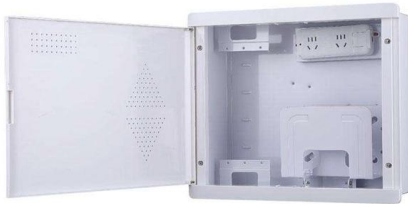
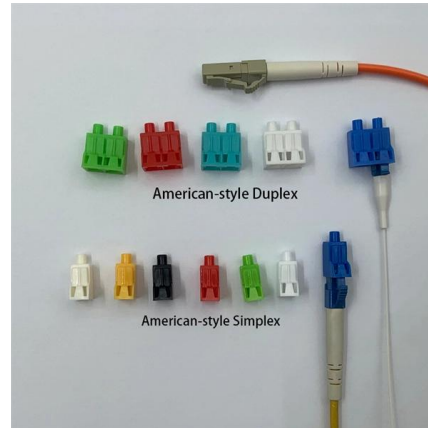
Table 312.6(A) Minimum Wire-Bending Space at

This was the result of a fact-finding investigation initiated in 2015 that included bend testing of aluminum conductors to ensure that the conductors did not sustain



DB BOX(Electrical Distribution Box): Everything You

Learn everything you need to know about the Electrical Distribution Box (DB Box). Explore types, materials, installation tips, etc.



Single Phase Distribution Box Definition and Main Parts

A single phase distribution box controls and protects home or office circuits. Learn its definition, main parts, and how it ensures electrical safety.

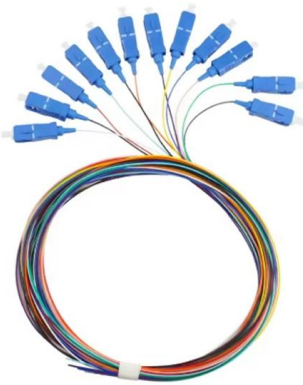
The Complete Guide to Distribution Box: Installation, Types & More

Commercial facilities require more robust distribution boxes capable of handling three-phase power and higher current ratings. These boxes often include specialized breakers for



Allowable Bends in Electrical Conduit per NEC code

A quarter bend to the NEC is what the rest of us call a 90 degree bend or simply a "90". In layman's terms this simply says what ever combination of bends (90's, 45's, 30's, etc), the total cannot exceed



A Definitive Guide To Distribution Boxes

The distribution box acts as the center of power distribution, distributing electricity to all connected devices. A distribution box, also known as a distribution board, panel board, breaker

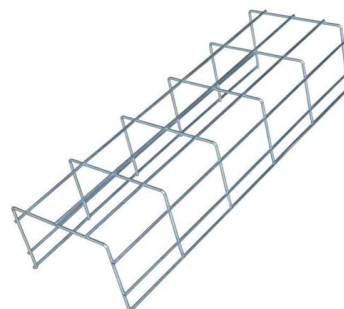


Power Distribution Boxes Explained Simply

Learn what a power distribution box is, how it works, key components, types, and why it's vital for safe and efficient electrical systems.

How to Install a Cable Distribution Box Safely and

Wiring arrangement: Arrange the wires neatly in the box, fix them with zip ties, avoid wires from tangling or coming into contact with sharp edges, and





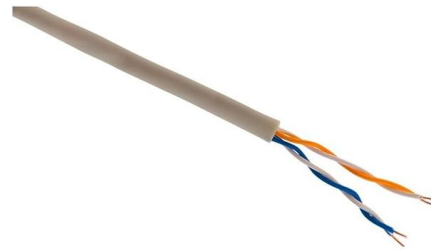
How to Install a Distribution Box--A Comprehensive



Distribution boxes are used for power distribution, circuit protection and cable management, while junction boxes are only used for wire connection

Distribution Box Installation: A Complete Guide to Safe

The distribution box, often referred to as a breaker box, fuse box, or electrical panel, is a critical component of any electrical system. It acts as the central hub for



Requirements And Specifications For Installation Of

The installation requirements and specifications of Distribution box involve many aspects, including site selection, fixing method, wiring specifications

Size determination, installation method and wiring mode

The distribution box is the central hub of the home circuit and the general control of our daily power consumption. It is an indispensable electrical equipment. If there



Analysis on the Installation of Assembled Distribution

First, fix the distribution box or panel using an iron frame. Straighten the angle steel, measure the dimensions, mark the cutting lines based on the



Understanding Distribution Boxes:A Comprehensive Guide

Understanding its significance, this article covers what a distribution box is, how it functions, its structure, the various types available, and how it



Grounding System Installation Standards for Distribution Boxes and

Hey there! If you're working with electrical systems, you know that grounding isn't just some bureaucratic requirement--it's literally the difference between a safe, functional system and a potential disaster.



Requirements And Specifications For Installation Of

In flammable and explosive environments, explosion-proof distribution boxes should be selected and explosion-proof treatment should be carried out.



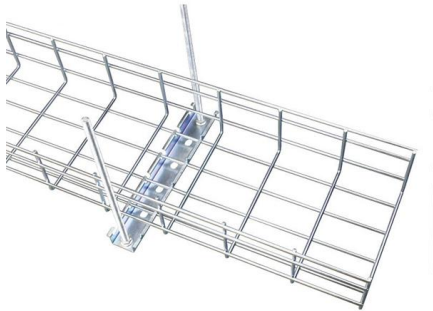
Distribution Box Wiring Steps

?Preparation phase? ?Box installation?: Make sure that Distribution box has been correctly installed and fixed. ?Material preparation?: Prepare the required cir

Size determination, installation method and wiring mode

6) The electrical appliances in the distribution box shall be first installed on the non-metallic or wooden insulated electrical installation board, and then fastened in the





Understanding Circuit Breaker Wiring Configurations in

Messy distribution boxes are dangerous and very hard to fix. This guide shows you how to organize circuit breaker wiring properly. You will learn to build a safe,

Contact Us

For datasheets, pricing, or custom telecom energy solutions, please visit:
<https://koskolong.co.za>