



Adam Tas Corridor Energy

Do switches need to have optical ports Why





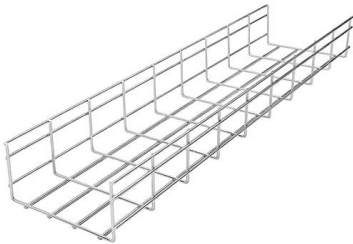
Overview

To meet these growing bandwidth requirements, access switches must have optical downlink ports. An all-optical Ethernet switch is a network switch whose service ports are entirely optical, meaning every interface uses fiber rather than copper. This design enables end-to-end optical signal transmission, avoiding the conversion between electrical and optical signals at the switch port level. So you get a full SFP switch then buy a bunch of copper/rj45 transceivers?

Just be careful with SFP+.



Do switches need to have optical ports Why

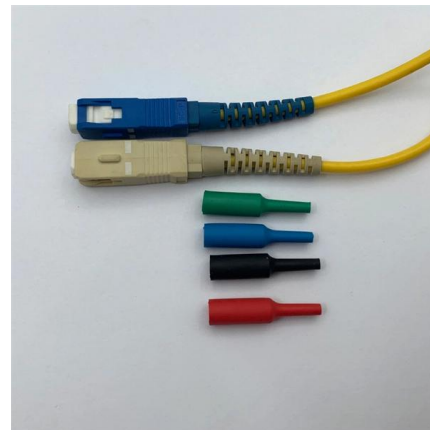


What is Optical Switch and Why Do We Use it?

Compared with traditional copper switch, the use of fiber optic switch has many advantages. The fiber layer used for optical switches is mostly static. This means that the optical

What Is an All-Optical Ethernet Switch? Why Do We Need It

To meet these growing bandwidth requirements, access switches must have optical downlink ports. These ports can then use optical fibers that offer a higher transmission rate for



Optical Switches -- EITC

Although some vendors refer to electro-optical switches as "optical switches," true optical switches support all transmission speeds. Unlike electronic switches,

What is Differences Between Switch Optical Ports and Ethernet Ports

Ethernet ports on switches already integrate Ethernet port modules internally, eliminating the



need for optical-electrical conversion. These ports utilize RJ45 interfaces and simply require



Where and How to Use Optical Switches?

This guide delves into the common uses of optical switches, the advantages they bring to each application, and the criteria for selecting the most

Optical vs Copper for switches and servers : r/sysadmin

I would argue that if you don't have a clear reason or business need for optical, just stick with copper. I'm always confused by these types of posts where someone is asking an enterprise type question but



Understanding SFP Switches: The Essential Guide to Fiber and

Discover the essentials of SFP switches, comparing SFP and RJ45 ports, their roles in Ethernet connectivity, and the latest SFP specification updates.



1075KWHH ESS



What Is a Network Switch, and When Do You Need One?

A network switch is a small box that adds extra Ethernet ports to your router. If you want to use several devices over a wired internet connection, or if



Optical Switches: Applications and Requirements

Explore the applications of optical switches in optical path provisioning, protection switching, packet networks, and modulation, focusing on their switching time and port requirements.



Ethernet Fiber Switch: Integrating Optics in Network Tech

Discover the power of Ethernet fiber switches in optimizing network performance. Find the best options for your network setup with our expert guide.

What Is a Network Switch, and Do You Need One?

A network switch adds more ports to your router. It's useful if you have a lot of wired devices in one place, or if you want to wire your home for



optical fiber optic switches , Photonics Dictionary , Photonics

Input and output ports: Optical fiber optic switches typically have multiple input and output ports, each connected to an optical fiber. The input ports receive optical signals from different sources or

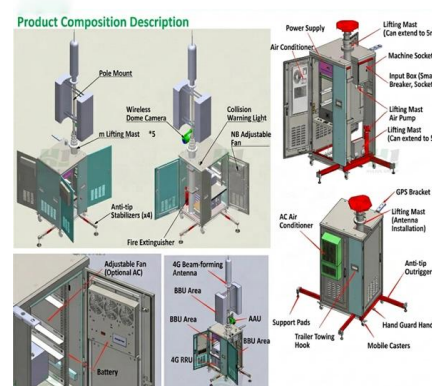


Why doesn't it matter which ports I use on a switch?

Be careful, there are some home switches which have QOS or similar technologies where ports do actually matter. On the other hand, if you use managed switches,

Where and How to Use Optical Switches?

In the realm of fiber optics, optical switches are indispensable for their ability to manage the flow of light signals, ensuring the agility and efficiency of





Optical Switch vs. Electrical Switch: Key Differences and Selection

Introduction This paper compares the core differences between optical switches and electrical switches, clarifying their distinctions across seven key dimensions including signal conversion mechanisms,

What is Differences Between Switch Optical Ports and Ethernet Ports

Optical ports on switches typically accommodate optical modules for transmitting data via fiber optic cables. In situations where there's a shortage of Ethernet ports, some users may insert



Fiber Optic Switches Information

Fiber optic switches route an optical signal without electro-optical and opto-electrical conversions. Types of Fiber Optic Switches Fiber optic switches can interface

Introduction of Two Optical Ports and the Role of Optical

The optical ports on the switch are usually paired together, with one TX sender and one RX receiver. The port type of the 100 M bit/s switches is

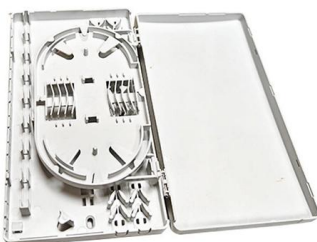


A Guide to SFP Ports on Gigabit Switches

Whether you're a network administrator, IT professional, or someone curious about upgrading your setup, this guide will break down everything you

AshwinD24's gists · GitHub

GitHub Gist: star and fork AshwinD24's gists by creating an account on GitHub.



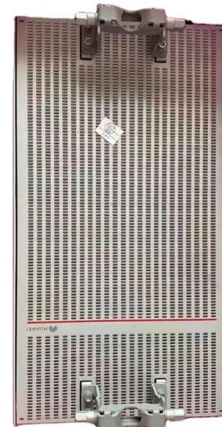
Optical Circuit Switching

Whether the signal is 10 Gbps, 100 Gbps, or even 800 Gbps, the optical switch doesn't need to understand it--it just needs to pass the light through.



SFP vs SFP+: A Complete Guide to Compatibility and

Optical transceivers are compact, hot-pluggable devices that convert electrical signals into optical signals, enabling high-speed data transmission



Optical Switching Basics: Types and Technologies

Explore the fundamentals of optical switching, including space, wavelength, time, and hybrid switching techniques. Learn about core components and applications.

All-Optical Ethernet Switch Explained: Features and

An all-optical Ethernet switch is a network switch whose service ports are entirely optical, meaning every interface uses fiber rather than copper. This



An introduction to SFP ports on a Gigabit switch

RJ45 ports are typically built into switches so customers don't need to purchase additional parts. Some Power over Ethernet switches have RJ45 ports that support PoE, which enables



What Are Optical Switches and How Do They Work?

Optical switches redirect light signals without converting them to electricity. Learn how they work, their types, and why they matter for modern networks.



What Are Optical Switches and How Do They Work?

Explore the mechanisms and advantages of optical switching--the future of data routing that uses light instead of electricity.

What is an Optical Network Terminal (ONT)? Your

An Optical Network Terminal (ONT), also known as a fiber modem, is a device provided by your Internet Service Provider (ISP) that acts as the crucial



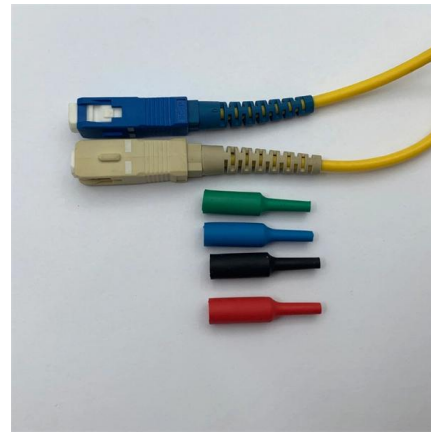


Unlocking the Potential of a Fiber Optic Switch in Modern Networks

Q: Why are gigabit sfp ports so important within fiber optic switches? Q: How do we provide redundancy in connection with the switch in a fiber optic network? Q: What are the most

Optical vs Copper for switches and servers : r/sysadmin

I am looking into refreshing our core switches. One question I am running into is optical vs copper. Most of my current infrastructure is copper, but the newer servers have optical ports as well. Is copper



Contact Us

For datasheets, pricing, or custom telecom energy solutions, please visit:
<https://koskolong.co.za>