



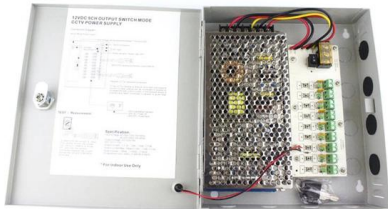
Adam Tas Corridor Energy

Does Huawei s dual-core optical module have separate transceiver





Does Huawei s dual-core optical module have separate transceiver



BiDi Transceiver: Utilizing WDM Technology for Dual

Bi-Directional (BiDi) Transceiver is a compact optical transceiver module that uses WDM (wavelength division multiplexing) technology and is

What Is an Optical Module and Its FAQs (V200)

If the label does not have a Huawei logo, run the display interface transceiver verbose command on the switch to check the vendor name of the optical module. If the value of Vendor Name is HUAWEI, the



Displaying Optical Module Information

Run the display transceiver diagnosis interface [interface-type interface-number] command to view diagnostic information about a specified optical module. This command displays the digital diagnostic



Single Fiber vs Dual Fiber Transceivers Understanding

A dual fiber optical transceiver uses two separate fibers--one for transmitting and the other for



receiving data. This design ensures higher



40G QSFP+ Optical Transceivers Complete Guide

How 40G QSFP+ optical transceivers boost performance in data centers and telecom networks. Learn about types, use cases, and cost-saving benefits.



High-Speed Optical Transceiver Modules: Architecture, Types

Introduction: The Backbone of Modern Data Infrastructure As enterprises scale up data traffic and edge-to-core communications, high-speed optical transceiver modules have become



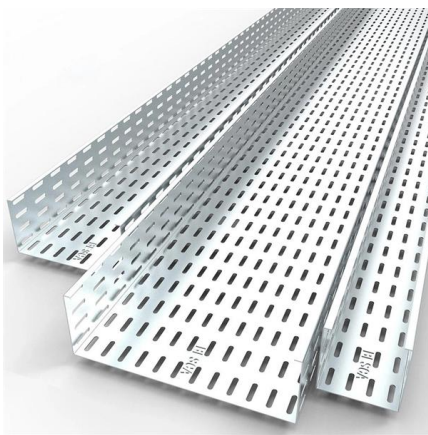
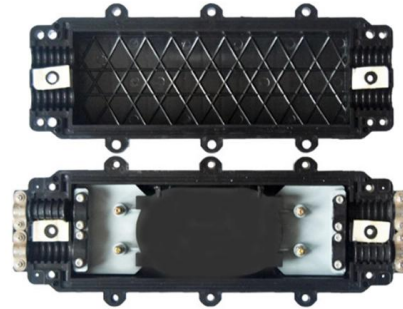
Huawei s White Paper on Constructing Intelligent Ultra-High-Speed

A typical coherent transceiver transmission system consists of three parts: optical digital signal processors (oDSPs), transmitters, and receivers. oDSP is a core component of the entire system. It



Optical Transceiver Types: Use Cases, Compatibility & Buying Tips

Explore optical transceiver types, real-world use cases, and expert buying tips to help you choose the right SFP, QSFP, or AOC/DAC.



The Difference Between Single/Dual Fiber and

Dual fiber modules use two separate fibers: one for transmitting (TX) and one for receiving (RX). This is the most common setup and is widely

Understanding Optical Modules

This document explains optical modules, their types, and applications, providing a comprehensive understanding of their functionality and usage.



FAQs About Optical Modules

No. Huawei S switches must use Huawei-certified S switch optical modules.



Huawei Optical Module Common Models

Optical modules are important devices in fiber optic communication systems. Huawei Optical Module is manufactured by Huawei Technologies Co. and originated in Shenzhen.



The Complete Guide to BiDi Transceiver

How Does BiDi Transceiver Work? Before delving into the importance of fiber optic choices, it's essential to understand how BiDi SFP+ operates.

8 Pluggable Modules for Interfaces

If an optical module is installed in a running device, you can run the display transceiver command to view parameters of the optical module, including the center wavelength, transmission distance, fiber





What is an Optical Transceiver? - VCELINK

What are Optical Transceivers? The optical transceiver, also simply known as an optical module or fiber optic transceiver, is an integration of a

Optical Modules for Huawei S Series Switches

If an optical module is installed in a running switch, you can run the display transceiver command to view parameters of the optical module, including the center wavelength, transmission distance, fiber types



The Different SFP Transceiver Types Explained , Equal

Various SFP transceiver types serve different purposes. Learn the differences between them so you can choose the right modules for your

Single Fiber vs Dual Fiber Transceivers Understanding

Single fiber transceivers, like the Bidi Transceiver, use one fiber for bidirectional data, while dual fiber transceivers require two fibers for separate TX



Differences Between Dual Fiber SFP and Simplex SFP

Dual fiber SFP and simplex SFP modules are two different SFP types, and understanding their differences is crucial for making informed

Checking Whether Optical Module Types Match

View the Transceiver Type field to check whether the local optical module type matches the remote optical module type. For example, if a GE optical module is installed on the remote interface and a



The Rise of Co-Packaged Optics: A Deep Dive into CPO

Understanding CPO Optical Modules: The Core Innovation Unlike a conventional pluggable optical transceiver that slots into a front panel, a CPO



Displaying Optical Module Information

Procedure Run the display transceiver [interfaceinterface-typeinterface-number , slotslot-id] [verbose] command to view information about the optical module on a specified interface.



Optical Module Solutions for Huawei S5700/S5720 Series Switches

When using switches, we may encounter many confusions, such as what types of optical modules are needed for different models of Huawei switches, and how to resolve issues encountered

FAQs About Optical Modules

If the optical transceivers have been certified, run the transceiver phony-alarm-disable command to disable non-certified optical transceiver alarms. Involved version: V200R001 and later



Huawei Data Center Network Short-Distance Optical Module Portfolio

BIDI optical module is equipped with a wavelength division multiplexer (WDM) coupler, that is, a duplexer, which converges and separates data transmitted on a single optical fiber based on



What Is StarryLink Optical Module? Why Do We Need It?

And to keep up with the rapid growth of AI computing power, Huawei offers StarryLink optical modules that can be sold separately, compatible with various types of computing NICs and



Optical Modules for Huawei S Series Switches

If an optical module is installed in a running switch, you can run the display transceiver command to view parameters of the optical module, including the center wavelength, transmission distance, fiber types



What is Optical Transceiver: A Beginner Guide (2024)

What is an Optical Transceiver? An optical transceiver, also known as a fiber optic transceiver or optical module, is a small packaged device that uses





Difference Between Single vs Dual Fiber Optical Transceivers

3-Application in data rate: Single fiber optical transceivers are normally used for short distance transmission from 100M to 10G and few in 40G/100G; dual fiber optical transceivers has a wide

Optical Module Solutions for Huawei S5700/S5720 Series Switches

This article summarizes several solutions for using optical modules with switches and common problems encountered during usage, along with specific solutions.



Contact Us

For datasheets, pricing, or custom telecom energy solutions, please visit:
<https://koskolong.co.za>