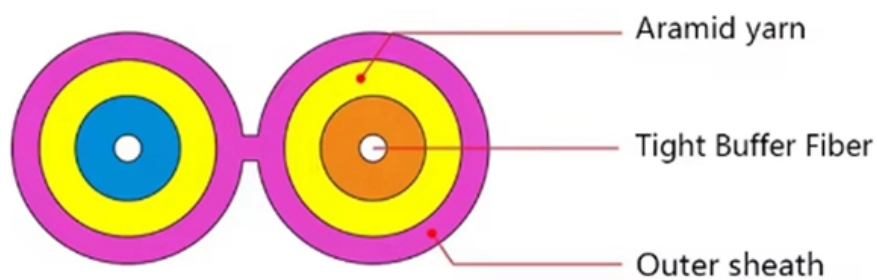




**Adam Tas Corridor Energy**

# Does a 10 Gigabit optical module equal 1Gbps





## Overview

---

1G SFP modules are limited to 1Gbps, while 10G SFP+ modules can handle up to 10Gbps. Thanks to its compact size and flexibility, the SFP form factor supports multiple. Gigabit optical ports, also known as 1G optical ports, are optical modules used to transmit 1Gbps data rates. While they often share the same physical form factor, their internal signaling rates, encoding methods, and hardware requirements are fundamentally different. a SFP+ port can support a 1Gbps or 10Gbps SFP transceiver, but, again, both end's/switch's transceiver must speed match. there's some intermediate device, then you can often use totally different transceivers and/or fiber. SFP (Small Form-Factor Pluggable) is a standard designed for data transmission mainly at 1 Gbps.



## Does a 10 Gigabit optical module equal 1Gbps

---



### Optical Fiber and 10 Gigabit Ethernet

As 10 Gigabit Ethernet (10GbE) is introduced into networks the physical limitations and properties of optical fiber introduce new challenges for a network designer.

### 10 Gigabit Ethernet (10GbE) Standards: The Definitive

Q: What is the most popular application of 10 Gigabit Ethernet? A: The most common use for 10 Gigabit Ethernet is Small and Medium Businesses,



### The Essential Guide to SFP-10G-LR Optical Transceivers

What is an SFP-10G-LR Optical Transceiver? The SFP-10G-LR is a hot-pluggable, industry-standard small form-factor pluggable module designed for

### What is a 1000BASE-SX SFP Optical Transceiver

A 1000BASE-SX SFP is a gigabit transceiver for multimode fiber, enabling 1Gbps Ethernet



connections up to 550 meters using 850nm wavelength.



## Unlock Long-Distance Connectivity: Your Ultimate Guide

Enter the SFP-1G-LX transceiver - the industry-standard workhorse for 1 Gigabit Ethernet connectivity over single-mode fiber (SMF). Designed for spans



## Understanding 1000BASE-LX SFP for Modern Networks

In today's bandwidth-hungry networks, extending reliable Gigabit Ethernet beyond copper's limitations is essential. Enter the 1000BASE-LX SFP



## Understanding 1Gbit and 10Gbit Port Speeds , HOSTCAY

Q: What do 1Gbit or 10Gbit mean for my VPS or Dedicated Server? A: These are network port speeds, indicating how fast your server can send or receive data. 1 Gbit (Gigabit) = up to 125 MB/s





## What is the difference between Gigabit and 10 Gigabit

Whether you should choose a Gigabit or 10GbE module depends on the type of network you are working with. For example, if your network is Gigabit



## What is the difference between 1g and 10G ports?

The terms "1G" and "10G" refer to network port speeds, indicating the data transfer rate supported by the respective ports. Here are the key differences between 1 Gigabit (1G)

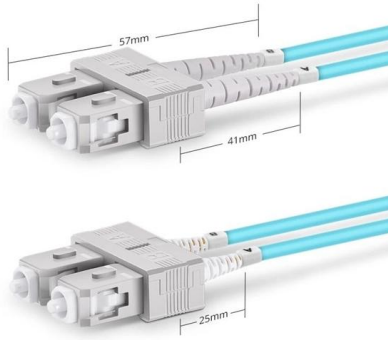
## 10 Gigabit Ethernet Fiber Design Considerations

For 10 Gigabit Ethernet applications a power penalty is allocated to the link power budget. This power penalty takes into account effects such as dispersion that may cause inter-symbol interference and



## Speed Fix: Gigabit vs 10GbE Ethernet Cable Comparison

Unsure whether to choose Gigabit or 10-Gigabit Ethernet cables? Learn the pros, cons, and ideal applications for each in this quick comparison guide.



Duplex SC UPC

## What is the difference between 1g and 10g sfp

The most significant difference is the data transmission rate. 1G SFP modules are limited to 1Gbps, while 10G SFP+ modules can handle up to 10Gbps. This tenfold



## What is 10G PON and How Does It Work

10G PON delivers up to 10 Gbps speeds using advanced fiber optics, ensuring reliable, high-speed internet for homes, businesses, and modern

## 1G vs 10G: Can I use SFP in SFP+ port?

Yes, you can mix SFP and SFP+ modules in the same network, but keep in mind that the maximum speed will be 1 Gbps, even if the SFP+ port can get 10 Gbps. Always the speed of the entire network





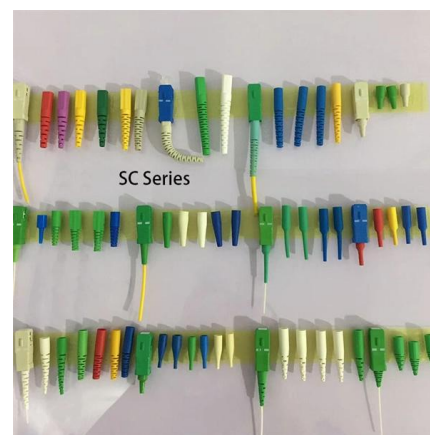
## Is sfp+ compatible with sfp?

Specifically, 10G ports are not compatible with optical modules with a rate of 1G and below. To ensure proper functionality, it is recommended to verify compatibility with vendors, prevent



## What Is an SFP Module? -- Complete Guide to SFP, SFP+ & SFP28

Learn what an SFP module is, how it works, its types, specifications, compatibility, and use cases in modern networks, including updated standards and trends for 2026.



## SFP Data Rate Explained: 1G vs. 10G vs. 25G Selection Guide

SFP 1G (Gigabit Ethernet) SFP+ 10G (10 Gigabit Ethernet) SFP28 25G (25 Gigabit Ethernet)  
Although these modules may share a similar physical shape, their data rates are

## Gigabit Internet - How many Mbps is 1 gig?

Let's break it down. What is gigabit internet?  
Gigabit internet is a type of high-speed broadband connection that delivers internet speeds of 1 gigabit per second



## 10-Gigabit Ethernet

The short-distance connections may use copper or fiber, while the long connections may use optical fiber. 10-gigabit Ethernet supports the only full



## Understanding the Conversion: How many Mbps are in

More simplistically, these units are mainly different in terms of scale; 1gbps is equal to 1000 mbps. This relationship is important when evaluating



## SFP-1G-SX Explained: The Essential Guide to 1G

The SFP-1G-SX module is a proven, reliable, and cost-effective solution for 1 Gigabit short-range fiber optic connectivity. Understanding its



## sfp-10g and 1 g

E.g. a SFP+ port can support a 1Gbps or 10Gbps SFP transceiver, but, again, both end's/switch's transceiver must speed match.



## Everything You Need to Know About a 10G Fiber Optic

Learn everything you need to know about a 10G fiber optic network card for high-speed Ethernet connections. Find out about Intel chips, SFP+

## SFP vs SFP+: The OEM Guide to 1G and 10G Optical

Most enterprise switches (Cisco, Aruba, Juniper) allow 10G SFP+ ports to accept 1G SFP modules. However, you may need to manually set the port



## 1 Gig vs. 1000 Mbps: A Professional Guide to Network

What is 1 Gig in Mbps? 1 Gigabit (Gb) is equal to 1000 Megabits (Mb). This means that 1 Gbps = 1000 Mbps. This conversion is important to understand



### 1G SFP vs 10G SFP+: How to Tell the Difference

A 10G SFP+ module, commonly referred to as SFP+, is an upgraded version of the standard SFP. It supports data rates of up to 10 Gbps, making it



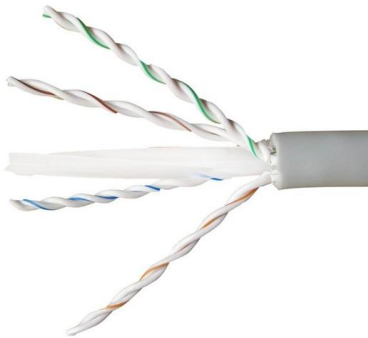
### Are 10G Optical Modules Compatible with Gigabit Optical Ports

Theoretically, 10G optical modules should be able to be backward compatible with Gigabit optical ports, because the rate of 10Gbps can include the rate of 1Gbps. However, in this

### Can a 10G SFP Run at 1G?

In general, the answer is no--10G SFP modules are not designed to automatically run at 1G speeds. There exist recent developments where Network





## **SFP Data Rate Explained: 1G vs. 10G vs. 25G Selection Guide**

Understand SFP data rate differences across 1G, 10G, and 25G. Learn compatibility, speed limits, and how to choose the right SFP or SFP+ module.

### **Contact Us**

---

For datasheets, pricing, or custom telecom energy solutions, please visit:  
<https://koskolong.co.za>