



**Adam Tas Corridor Energy**

# **Does an Olt device require a core switch**





## Overview

---

The OLT serves as the starting point of a PON, connecting to the core switch via an Ethernet cable. In the age of fiber-to-the-home (FTTH) and ultra-broadband connectivity, the Optical Line Terminal - or OLT - is one of the most crucial devices powering our high-speed digital world. When you stream a 4K video, join a remote meeting, or play an online game on a gigabit fiber connection, an OLT. The OLT is the core component of the optical access network, which is equivalent to a switch or router in a traditional communication network, and is also a multi-service providing platform.



## Does an Olt device require a core switch

---



### What Is an OLT? , Definition, Function & Role in GPON

In a GPON (Gigabit Passive Optical Network), the OLT is the core coordinator that ensures data flow in both directions across the Optical

### What Is an OLT? , Definition, Function & Role in GPON Networks 2025

Introduction - Why OLT Matters in Modern Fiber Networks In the age of fiber-to-the-home (FTTH) and ultra-broadband connectivity, the Optical Line Terminal - or OLT - is one of the most



### Home -The Fiber Optic Association

An OLT (Optical Line Terminal) is the main device in a PON system that connects ONUs through the ODN segment, enabling services to subscribers. OLT is

### Understanding OLT, ONU, ONT, and ODN in PON

OLT stands for Optical Line Terminal, which is a device used for connecting fiber optics and



transmitting signals. The OLT serves as the starting

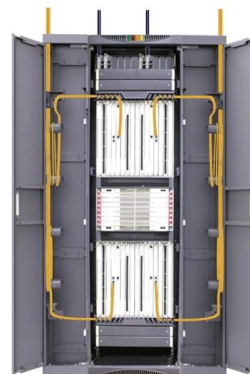


### Choosing the Right OLT for Your FTTH Network

The OLT manages upstream and downstream communication and handles bandwidth allocation, traffic control, and security functions. In simple

### GPON OLT Basics and Beyond: A Comprehensive Introduction

The OLT is a data switching device deployed at the edge of an operator's or enterprise's network, positioned at the head-end of the Passive Optical Network (PON) architecture. It delivers



### Guide to Optical Line Terminal (OLT) Classifications: Detailed Types

In modern communication networks, optical line terminal (OLT) is the core device to realize point-to-multipoint(P2MP) in passive optical network (PON) architecture. The OLT is responsible not only for



## Overview Of OLT And Its Application In GPON Network

OLT equipment is connected to the front-end (aggregation layer) switch with a network cable and converted into optical signals. As a central office, it can realize



## Cisco Catalyst PON Series FAQ

Connecting to the core of the network are the standards-based, compact, high-density network optical aggregation devices called Cisco Catalyst

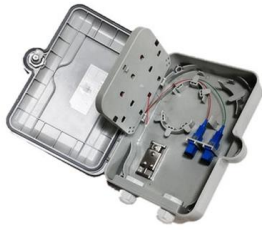
## What is OLT, ODN, ONU and ONT in FTTH Network?

The OLT is the core component of the optical access network, which is equivalent to a switch or router in a traditional communication network, and is



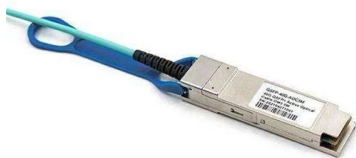
## Cisco Catalyst PON Series FAQ

Active switching devices often require closet placement for power and cooling, making active networks more challenging to deploy. The Catalyst Micro



## Optical Modules in OLT vs. Switches: Types and

OLT (Optical Line Terminal) and switches are critical devices in optical communication networks, but their optical modules differ significantly in



## Guide to Optical Line Terminal (OLT) Classifications:

OLTs with a single power supply typically require only one power module, whereas OLTs with dual power supplies are equipped with two power

## Gigaopto --Professional Optical Transceiver Manufacturer

Hier sollte eine Beschreibung angezeigt werden, diese Seite lässt dies jedoch nicht zu.





## Guide to Optical Line Terminal (OLT) Classifications:

In modern communication networks, optical line terminal (OLT) is the core device to realize point-to-multipoint (P2MP) in passive optical network (PON)

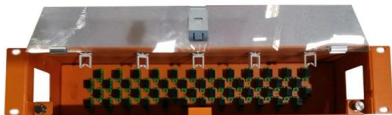
### PON Network Components Overview: OLT, ONU, ONT,

OLT Device Components The OLT equipment consists of a rack, a control and switching module (CSM), an EPON link module (ELM), a PON card, a



### Full Guide of PON: OLT, ONT, ONU, ODN and other

In this guide, we'll break down the key components of a PON, including Optical Line Terminals (OLT), Optical Network Units (ONU), Optical



### OLT (Optical line terminal)

The OLT receives data from the service provider's core network and sends it downstream to the ONUs/ONTs. It also receives data from the





## Cisco Catalyst PON Series FAQ

Cisco Catalyst PON Series switches are managed through the Cisco Catalyst PON Manager NMS tool. The Cisco Catalyst PON Manager is a powerful network management software that enables

## Full Guide of PON: OLT, ONT, ONU, ODN and other

The OLT serves as the starting point of a PON, connecting to the core switch via an Ethernet cable. The primary role of an OLT is to convert, frame, and



## Read the Features Optical Line Terminal (OLT)

In a fiber optic network, an OLT (Optical Line Terminal) is a device used to aggregate and manage the optical signals from multiple Optical Network



## Exploring the Functions of GPON OLT and ONT in

Learn about the functions of GPON OLT and ONT in an optical line terminal network. Explore the roles they play in a gigabit passive optical network.



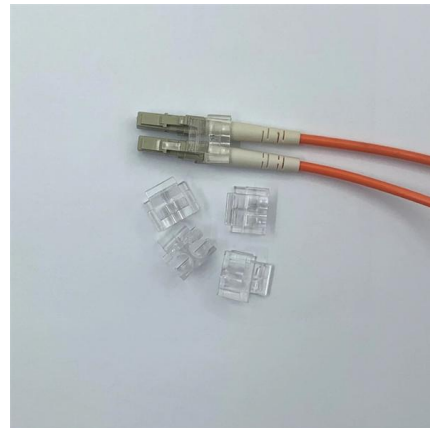
## Mastering OLT Technology for Enhanced Network Performance

Learn how to optimize OLT technology for improved network performance, reliability, and scalability in this detailed guide.



## Chassis OLT vs Box OLT: When to Upgrade Your FTTx

Discover the key differences between box OLT and chassis OLT architectures. Learn when to upgrade your FTTx core for better scalability,



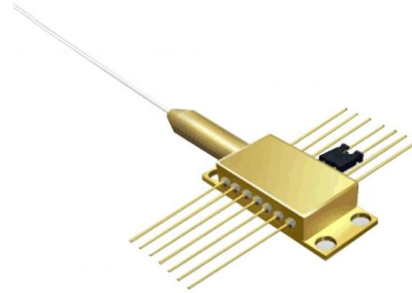
## OLT vs ONT: What Are the Key Differences?

An OLT is a pivotal, high-capacity device functioning as the transmission endpoint within a PON network. This robust component efficiently



## What is The Difference Between OLT and Switch?

OLTs are crucial in delivering high-speed broadband services over fiber optics, especially in PON architectures, while switches are fundamental



## Overview Of OLT And Its Application In GPON Network

Overview of OLT and its application in GPON network OLT Overview OLT is an optical line terminal, the core equipment of the access network, and a hardware

## PON Network Components Overview: OLT, ONU, ONT,

OLT stands for Optical Line Terminal, a device that connects optical fibers and converts signals. This component plays a vital role in PON, as the



## All You Need To Know About OLT Equipment

Introduction To OLT Equipment From Major Manufacturers 1. Huawei MA5680T Series SmartAX MA5680T/MA5683T/MA5608T devices are integrated



## Contact Us

---

For datasheets, pricing, or custom telecom energy solutions, please visit:  
<https://koskolong.co.za>