



Adam Tas Corridor Energy

Does cable tray installation count as conduit installation





Does cable tray installation count as conduit installation

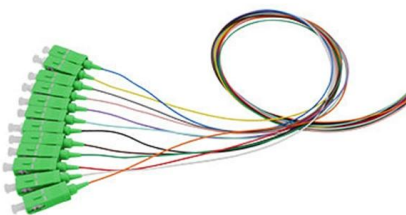


Cable Tray vs. Conduit: A Comparison for Large-Scale Cable

When using a tray system, all a worker has to do is reach up and place a new cable. With a conduit system, you are always forced to pull out the old wires only to put in a new one, or

Conduit vs Cable Trays: Choosing the Right Electrical Raceway

Yes, combining both systems can optimize performance by leveraging the strengths of each. For example, use cable trays for



Conduit vs Cable Tray Cost, Installation, Price & Electrical Cable

When Does Conduit vs Cable Tray Installation Cost Matter Most? Statistically, nearly 62% of projects over 5,000 meters of cable length report budget overruns due to underestimating installation

Cable Tray vs. Conduit: Which Is Better for Large

Conduits, while protective, are less adaptable, potentially increasing maintenance complexity



and costs for large installations. Market Trends and



Cable Trays vs Conduits: Which One Should You

While exact pricing varies, cable trays generally require less labor and fewer materials, making them more cost-effective for large-scale installations. Conduits,

A Guide to Installing and Supporting Electrical Cable Trays

A professional guide to installing electrical cable tray systems per NEC Article 392. Covers support, securing cables, and fill calculations.



NEC Questions and Answers based on 2017 NEC ®

Cable tray installations aren't limited to industrial establishments. If exposed to the direct rays of the sun, insulated conductors and jacketed cables must be



Cable Tray and Conduit Installation Method Statement

This method statement describes a detailed procedure for properly installing cable trays and conduits for the Feeder System.



Cable Tray vs Conduit: Which Is Best for Your Project?

Conduit systems are enclosed pipes that require precise bends, threading, and pulling. They're excellent for protecting individual circuits in harsh or public areas, but they're

Installation Of Cable In Cable Trays: NEC, Safety

Cable installed in tray is subject to many of the same considerations as cable being installed in conduit systems. Correctly calculated data and adherence to the



Cable Tray Questions , Cable Tray Institute

Answer: The NEC does not have a specific installation clearance, but indicates in section 318-6 (b) that cable trays should be exposed and accessible. Telecommunications standard TIA/EIA-569



Conduit vs Cable Tray Cost, Installation, Price & Electrical Cable

Conduits often cost more to install due to complex bending and securing requirements, while cable trays are usually quicker to install but might need stronger structural support.



NEC Standards for Cable Trays: Grounding, Fill Capacity & Installation

Our solutions emphasize mandatory grounding and bonding for metallic trays, firestop systems at penetrations, and mesh tray options that reduce installation time while maintaining

Cable tray

In the electrical wiring of buildings, a cable tray system is used to support insulated electrical cables used for power distribution, control, and communication. Cable





Conduit vs Cable Trays: Choosing the Right Electrical Raceway

Discover the differences between cable tray vs conduit and determine which is better for your electrical installations. Learn about

Tray-Rated Cable 101

Tray-Rated Cable 101 What is tray cable?
According to the NEC (National Electric Code), tray cable is defined as "a factory assembly of two or more insulated conductors, with or without associated bare



Installation Of Conductors And Cables: NEC Wiring

Installation of conductors and cables ensures compliant wiring, routing, and terminations with proper ampacity, insulation, grounding, shielding, and bend

Cable Tray vs. Conduit: Which Is Better for Large

Choosing between cable trays and conduits for large installations significantly impacts cost, installation efficiency, safety, and maintenance. Cable



Right Sizing Your Pathways--From Tray to Conduit

Right Sizing Your Pathways--From Tray to Conduit When it comes to pathways for communications cabling to get from one place to another, industry



Cable Tray Systems: Requirements and Best Practices

Comprehensive guide to cable tray systems requirements: tray types, materials, loading, supports, bonding, routing, and best practices for safe electrical cable management.



Understanding Cable Pathways, Cable Conduits, Cable

In this blog post, we discuss two types of cable pathways: conduits and cable ladders. Additionally, we cover cable pits. Explore the essentials of cable



What is the difference between cable tray vs conduit?

Ans: Cable trays are cheaper and more cost-effective than conduits due to their simple and open design, while the conduits are super costlier as they



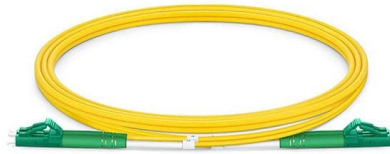
Tray Cable and Cable Trays Vs. Conduit: A

That is, cable trays are infrastructure used to support and convey electrical cables - which are not enclosed, in the manner of conduit. By contrast,



Cable Tray Fill Rules (NEC 392)

This guide covers the cable tray types and their appropriate applications, the fill rules for each configuration, ampacity derating requirements,



Safely Installing, Maintaining and Inspecting Cable Trays

Review the proper methods for safely installing, maintaining and inspecting electrical cable trays; Provide information regarding the hazards of overloaded cable trays;



Cable Conduit vs. Cable Tray: Alternatives To Open Wiring

Two common alternatives to open wiring (types of an enclosed wiring system) are cable conduit and cable tray. Let's focus on which one to choose for



Contact Us

For datasheets, pricing, or custom telecom energy solutions, please visit: <https://koskolong.co.za>