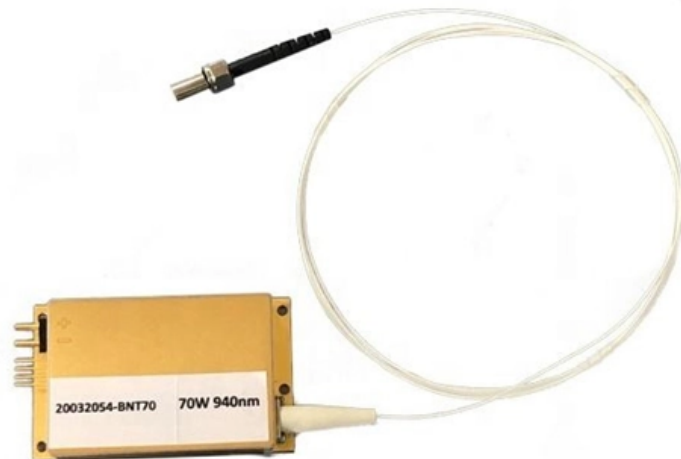




Adam Tas Corridor Energy

Does the set-top box need to be connected to an optical receiver





Does the set-top box need to be connected to an optical receiver



How To Connect An AV Receiver To TV - Complete Guide

But don't worry, we'll walk you through the process of connecting an AV receiver to your TV step by step in this guide. We'll go through all the

What is the preferred Set-Top Box to TV connection?

Choosing the preferred Set-Top Box to TV connection isn't just a technical decision--it's a strategic one. For best results, HDMI remains the go-to choice for quality and reliability, while AV and



Connecting Your Optical TV Cable to Your Home Theater: A

Ensure that your TV is outputting audio through the optical connection and that your home theater system is set to the correct optical input. Additionally, check the volume levels on both

Buying a set-top box: everything you need to know

Prices have come down to the point that most set-top boxes are extremely affordable, so you



now have to choose based on what you want to



How a Set-Top Box Works - A Step-by-Step Guide

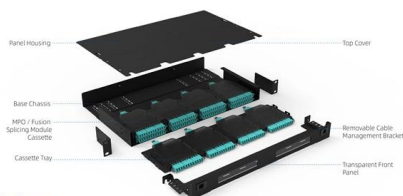
It's worth noting that modern set-top boxes often support internet connectivity, enabling access to a vast library of online content. Step 7: Remote

6 Easy Steps to Connect Optical Audio Cable to TV

How to Connect Optical Audio Cable to TV Without Hassle Easily connect your optical audio cable to your TV! Follow our step-by-step guide for a



Component Diagram



Key dimensions



Set Top Box to Receiver to Tv Connections

Hi all! I just purchased a new LG C9 and a Denon x6500 along with the Panasonic ub 820. Connection from the blu ray to AVR to TV is no problem. The new tv has EARC and the AVR as



Connecting Your Cable Box to Your Receiver and TV: A

To ensure that your cable box, receiver, and TV are configured to output and display 4K resolution, you need to check the settings on each device. First, you should ensure that your cable



How to Connect an Optical Cable

Optical audio can sound great, but how do you wire an optical cable to your system? Learn how to connect an optical cable to your TV, soundbar and

How does fiber optic connect to TV?

A Set-Top Box (STB) is a device that receives the digital TV signal and decodes it for display on your television. In a fiber optic setup, the STB receives data from the



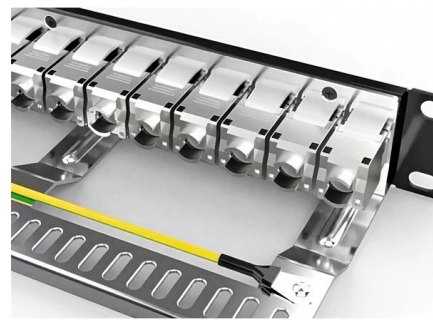
Rules for connecting a digital set-top box to a TV set

Learn how to properly connect your digital set-top box to a TV using various connection options such as HDMI, component input, SCART, S-Video, RCA, and RF-connector. This guide covers both old and



TV and Set Top Box Wiring and Connection Diagram

The set-top box that allows coaxial cable input has a cable converter that generally converts the source signal to the actual content. On the other hand,

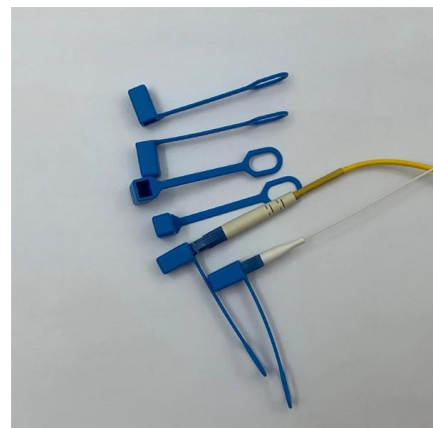


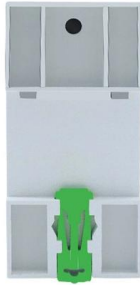
Set Top Box to Receiver to Tv Connections

Which will give me best picture and sound qualities while running apps like Netflix, amazon, etc, which I'll be using directly from the TV and which is better for picture and sound quality

What is an Optical Terminal Network and Why Do I

What is an Optical Network Terminal (ONT)? You'll typically find an Optical Network Terminal (ONT), or fiber box, in a central part of your home, like





What Is the Optical Audio Port, and When Should I Use It?

You can pipe the HDMI video from the source (say your cable box) into your TV, then turn right back around and pipe the optical audio out to your

Proper Way To Hook Up TV, Home Theater, & Cable Box

I would connect the cable box (and any other devices) to the receiver, and the receiver to the TV. Use the ARC HDMI ports if you've got 'em, and this will get audio back to your receiver from



How to Connect Optical Audio Cable from TV to Home Theater

You can connect an optical audio cable from your TV to your home theater by putting one end in the optical audio output on your TV and the other end into the input of your home theater

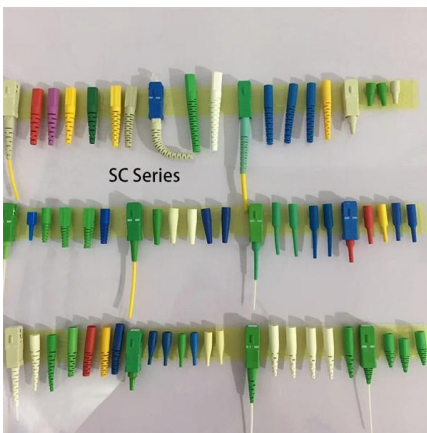
What Is a Set Top Box? Here's What You Should Know

Are you into streaming series or movies on your television? Then you need a set top box in your home entertainment set-up! Having access to on



How to hear the television sound through the speakers

If you find that your TV, A/V receiver or home theater system does not support ARC, you will need to use Option 2: Coaxial Digital Cable, Optical Digital Cable, or



HDMI vs. Optical: What Cable Should You Use?

Do you need an HDMI cable to connect your TV to your soundbar or receiver or will optical work?



How to connect your home theater to your Internet set-top box

Using a digital to analog audio converter allows you to connect the optical or coaxial digital audio output of the set-top box or television to the analog audio input of the stereo amplifier or soundbar.





TV Digital Audio Output Hookup for Optical or Coaxial cables

TV Digital Audio Out Hookups This is a common hookup used when you have an over the Air Antenna or Smart TV with applications for movies or audio sources. The



Rules for connecting a digital set-top box to a TV

Discover the ultimate guide to connecting your digital set-top box to your TV. Learn essential rules, tips, and troubleshooting steps to ensure a seamless setup and optimal viewing experience.

How Do I Connect My Digital Optical Cable to My Receiver: A

In today's digital age, connecting audio devices using cables can sometimes be a daunting task. When it comes to connecting a digital optical cable to a receiver, it is crucial to



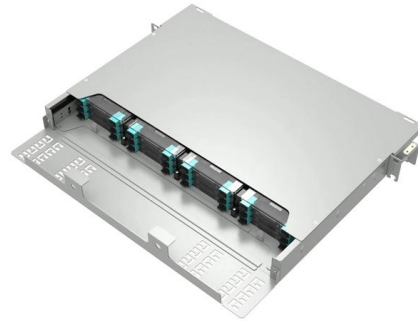
How to Connect Your TV to a Receiver, Soundbar or

Find Your TV's Audio Output (s) Your first step is to figure out what kind of audio output your TV has and plug that into an audio input on your sound



Set-top box

Satellite and microwave-based services also require specific external receiver hardware, so the use of set-top boxes of various formats has never completely



Solved!

I have an older Yamaha AV receiver and surround sound system, however, it only has RCA ports. My newer Panasonic TV is connected to set top box and has Chromecast plugged in. It

LG TV

To use the service with a set-top box, connect your TV to a set-top box with an HDMI cable and enable the set-top box as an active external input source



Contact Us

For datasheets, pricing, or custom telecom energy solutions, please visit:
<https://koskolong.co.za>