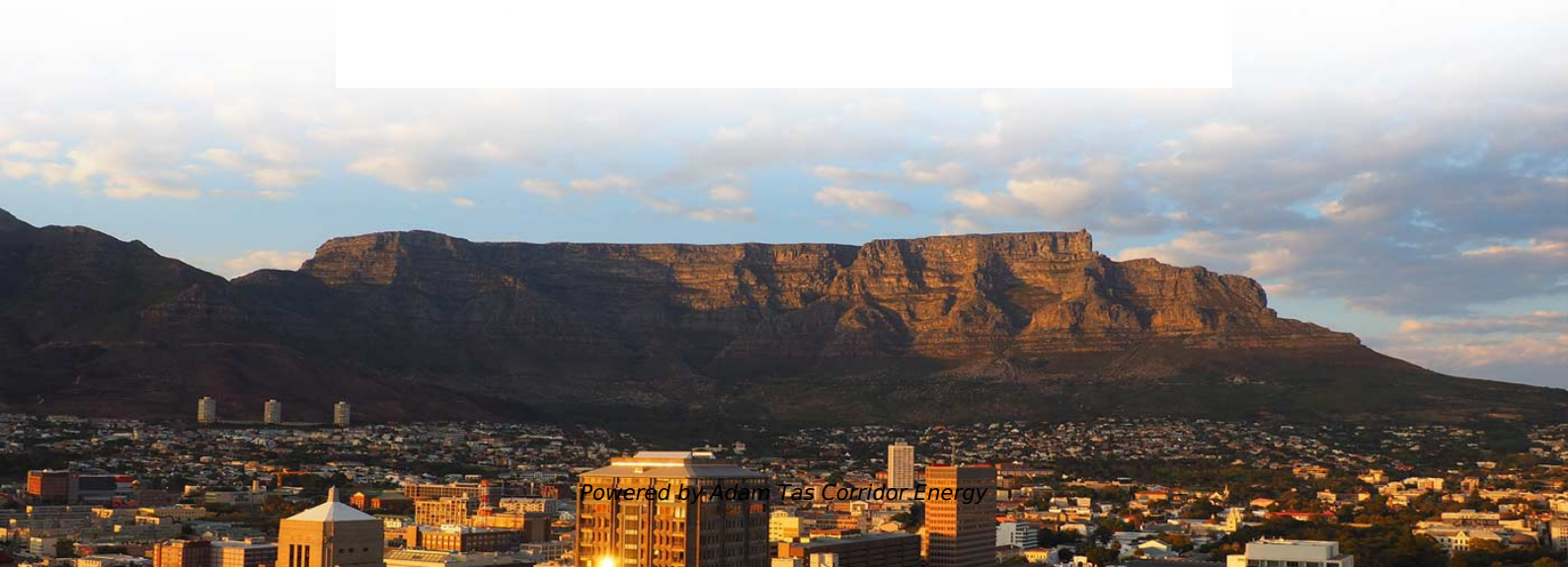




Adam Tas Corridor Energy

Does the telecommunications tower project require land allocation





Overview

The tradeoff is land: the guy-wire anchors require a footprint that can stretch hundreds of feet in every direction from the base. Navigating communications tower regulations means understanding FCC rules, local zoning, lease terms, and safety requirements before you build. Civil construction for telecom tower sites involves a series of well-defined steps aimed at creating a robust foundation for telecommunications infrastructure. Conduct radio frequency (RF) planning and coverage analysis to determine areas with poor or no signal. Tower owners must comply with a multi-layered regulatory, engineering, and safety framework that governs tower siting, where a cell tower can be built, how it must be designed, and how it operates throughout its lifecycle. These rules ensure that entities constructing facilities to support Commission-licensed services take appropriate measures to protect environmental and.



Does the telecommunications tower project require land allocation

Telecommunications Towers/Antenna Facilities Protocol



Proponents will be encouraged to locate telecommunications towers with a minimum setback to all property lines of a distance equivalent to the height of the telecommunication tower (measured from

What Are the Requirements for a Telecom Tower?

Learn the key requirements for a telecom tower, including zoning regulations, safety approvals, structural standards, and compliance needed for tower construction.



Telecom Regulations: Compliance in Cell Tower

Cell tower construction is critical to expanding telecommunications networks, but navigating the complex regulatory landscape can be challenging.

Executive Order No. 32: Streamlining Permitting

These facilities will cater to applicants seeking to obtain building permits and other related



certificates, including those required for the construction



Best Practices for Transmission Tower Construction:

Overview Best practices for transmission tower construction focus on ensuring safety and efficiency through comprehensive site assessments,

Stages in the Installation of a Tower Site

Tower sites are essential components of telecommunications infrastructure, enabling efficient transmission and reception of communication signals. But have you ever stopped to think



2. Imported design is convenient for expansion.
The design of two inlets saves space and allows for rear line entry.



Guidelines for the location, siting and design of telecommunications

The design and siting of telecommunications towers and ancillary facilities should be integrated with existing buildings and structures, unless it is impractical to do so, in which case they should be sited



Understanding Telecommunications Tower Siting Laws: A

Telecommunications tower siting laws play a crucial role in the establishment and regulation of communication infrastructures that underpin modern connectivity. These laws govern



Tower and Antenna Siting

Building a new tower or collocating an antenna on an existing structure requires compliance with the Commission's rules for

The Siting of Wireless Communications Facilities: An Overview of

Summary The siting of wireless communications facilities has been a topic of controversy in communities all over the United States. Telecommunications carriers need to place towers in areas



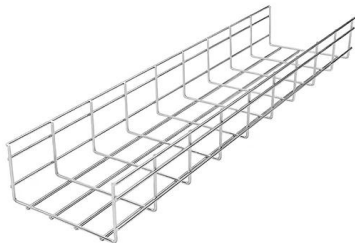
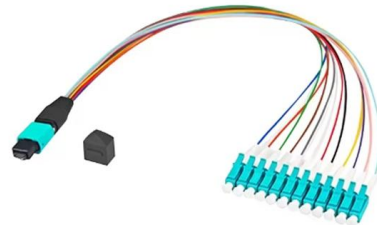
Telecommunications Land Policy: Telegraph Act, Tower

The telecommunications land policy encompasses statutory provisions governing right-of-way access, tower installation procedures, and fiber



Comprehensive Guide to Civil Construction for Telecom

This comprehensive guide serves as a valuable resource for engineers, project managers, and stakeholders involved in telecom tower



Telco rights to enter property

Telcos install and maintain network facilities for phone and internet services. Telcos have special rights to enter your property to work on facilities, but there are rules they must follow.

How To Lease Land For Cell Towers: Buyer's Guide (2025)

How To Lease Land For Cell Towers: Buyer's Guide (2025) Leasing land for cell towers is a strategic move that benefits both telecommunications companies and landowners. As demand for wireless





Communications Tower Regulations, Zoning, and Permits

If you own land that a tower company wants to use, the relationship starts with a ground lease. These are not standard commercial leases -- they involve long time horizons, complex

NSW Telecommunications Facilities Guideline, Including Broadband

The Transport and Infrastructure SEPP makes telecommunications and other communications facilities permissible on all land across NSW, irrespective of zoning. The consent authority must consider the

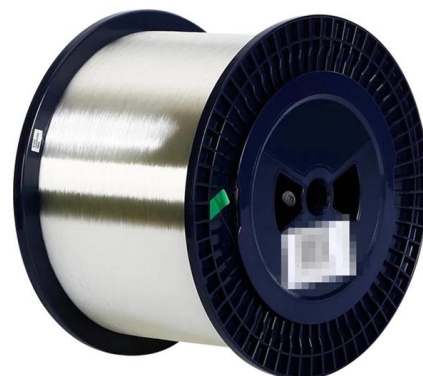


TOWERS: Laws and Regulations Governing Tower

However, as the demand for tower development continues to rise, so do the legal complexities surrounding their construction and operation. Telecommunications

Telecoms Infrastructure Blog: Planning, Constructing,

Identify potential site locations that meet RF requirements, zoning laws, and accessibility needs. Conduct a site survey to evaluate the physical space,





Cell Tower Land Lease Agreement Guidelines Philippines

CARP: Agricultural land in excess of retention limit may require DAR clearance; towers qualify as "infrastructure" and are exempt from conversion if < 1,000 m². 5.3 Easements for

A Comprehensive Guide to Zoning for

Ultimately, the project was approved, demonstrating how transparency and education can alleviate community apprehensions.



By Adam Clark, Building broadband and mobile infrastructure

Who decides where to build mobile and broadband infrastructure? Broadband and mobile telecommunications networks in the UK are rolled out by private companies, here referred to as

Wireless Telecommunication Facilities and Zoning

Most of the restrictions on local land use regulation of wireless telecommunication facilities are based on federal law. There are also state laws on the topic, which generally mirror federal provisions.



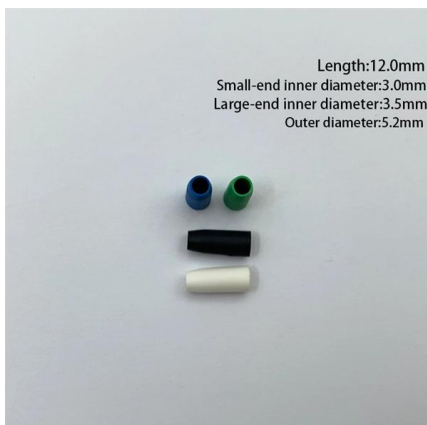
CELL TOWER ZONING AND PERMITTING

Unless the underlying jurisdiction does not require any zoning at all, most cell towers must be approved by the local land use office prior to being built. In some cases,



The signal saga: Decoding South Africa's cellphone

Cellphone towers evoke a polarising debate, particularly in South Africa (SA), where apprehensions regarding their potential adverse effects on health,



Comprehensive Guidelines on the Regulation of Telecommunication Towers

Explore the regulation of telecommunication towers and antennas within telecommunications law, including permitting, safety standards, zoning, and emerging challenges.



Four Practical Tips for Drafting Telecom Easements

The limited transmission power of mobile phone requires towers to be closely spaced to maintain reliable signal strength. The underlying legal framework for placing telecommunications



Communications Tower Regulations, Zoning, and Permits

Navigating communications tower regulations means understanding FCC rules, local zoning, lease terms, and safety requirements before you build.

Understanding Local Government Regulations for Telecom Towers

Zoning and land use restrictions form a fundamental part of local government regulations for telecom towers, ensuring that infrastructure development aligns with urban planning policies.



Telecom Tower Builds, Planning, Managing, and Executing

Telecoms towers are critical infrastructure components for wireless communication services, and the deployment of these towers can involve multiple projects across



Contact Us

For datasheets, pricing, or custom telecom energy solutions, please visit:
<https://koskolong.co.za>