



Adam Tas Corridor Energy

Does the terminal box need to be grounded





Overview

Metal electrical boxes must be grounded because they are conductive components that enclose energized wires and connections. For one thing, the conductors are passing through box mounting holes! That particular kind of conductor belongs in conduit, which should be entering through one of the circular knock-out holes in the box. We can see the box is mounted to the drywall with simple sheet metal mounting tabs, and based. In this article, we'll discuss why grounding is so important and how you can go about doing so in an effective and efficient manner.



Does the terminal box need to be grounded



Is an outlet grounded if it is screwed into a metal box

Is an outlet grounded if it is screwed into a metal box that is itself connected to the incoming ground wires?

Am I supposed to ground the breaker box itself?

The box itself isn't connected to the ground (multimeter showed no continuity between ground and the box). Should I ground the box to the common?



A Practical Guide to Grounding Terminal Block Installation

Explore our complete guide to the grounding terminal block. Learn about types, standards, and installation best practices for safe and reliable control



electrical

We can see the box is mounted to the drywall with simple sheet metal mounting tabs, and based on the hack with the two supply



conductors, we can be



250.148 Continuity of Equipment Grounding Conductors

An equipment grounding conductor passing through the box without a splice is not required to be joined inside the box to others that are spliced in the box.

How To Ground Electrical Enclosure: The Complete Guide

Chassis Ground And Isolated Ground At times the terminology "chassis ground" is applied to define a grounded electrical enclosure.



Electrical Box Ground Wire Connectors & Connections

Metal electrical boxes such as junction boxes, metal gang boxes, or metal receptacle, light or ceiling fan mounting boxes all need to be connected to the system ground, and of course all 120V and 220V



No splice made. Does metal j-box need to be grounded

It does not matter. It is a metal box, the NEC requires that it be grounded to the incoming ground from the panel. If you want to just leave the grounds tied together without attaching to the



Do I need to ground a new metal 240V outlet box?

The metal box will either have a ground screw, or a site designed to accept a machine screw (bolt) threaded #10-32. For a 50A circuit using THHN wire in conduit, and with 75C terminals

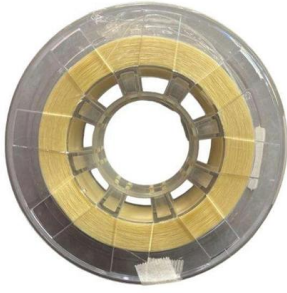
How to Ground an Outlet with Various Methods

Only metal boxes need to be grounded. However, the grounding wires in a plastic outlet or switch box should not be cut back so short that they are



Does the metal receptacle box for 6-30 NEMA need to be grounded?

An equipment bonding jumper shall be used to connect the grounding terminal of a grounding-type receptacle to a grounded box unless grounded as in 250.146 (A) through (D). The



Do I Need To Ground A Junction Box

Furthermore, the junction box should also be inspected regularly for signs of corrosion or damage. If any problems are detected, the grounding wire should be replaced immediately. Most



wiring

Should the metal box be grounded if no conduit?
This is a 240V double 20 Amp breaker for an air compressor. 3 + ground wires to outlet box.
Outlet looks standard round but has one hot

Do the Light Fixtures Need to Be Grounded? And How

Metal Fixtures: Any light fixture with exposed metal parts must be grounded to divert stray electrical current and prevent electric shock.
Metal



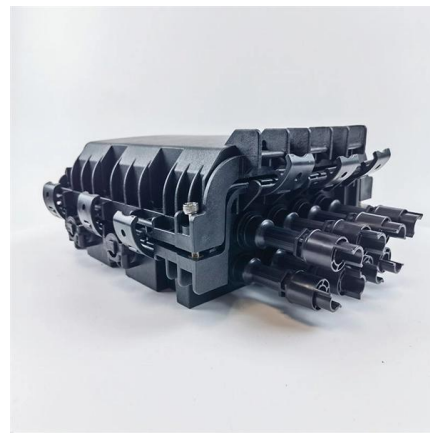


Can You Ground an Outlet to a Metal Box?

Grounding the receptacle through the metal box is only permissible when the box is reliably grounded, and several scenarios make this practice unsafe or prohibited. The most common

Do Junction Boxes Need to be Grounded? - Fix It Up Home

Chances are your junction box is already grounded, unless otherwise. It's required by the NEC (National Electrical Code) to have junction boxes grounded, especially for metal ones. Grounding will always



Do Metal Electrical Boxes Need to Be Grounded?

The metal boxes need to be grounded to make sure proper electric supply and safety. When you use the metal box to ground, you must pass under the

Electrician's Guide: How To Ground An Outlet

Look inside the box: Turn off the power to the outlet at the breaker, unscrew the faceplate, and pull the outlet out gently. If you see a bare copper or



Wall Mount Cabinet Server Racks



How to Properly Ground a Metal Electrical Box

Grounding is a critical safety system that significantly reduces the risk of electric shock and fire hazards. Metal electrical boxes must be grounded because they are conductive components

How to Ground a Metal Electrical Box: A Step-by-Step Guide

Learn how to ground metal electrical boxes in 3 easy steps. This guide will help you safely and effectively ground your boxes, preventing electrical shocks and fires.



Does A Junction Box Need To Be Grounded

The answer to this question is a resounding yes: junction boxes absolutely must be grounded if you want to ensure the safety of your wiring system. In this article, we'll discuss why





electrical

As for your title question: yes, it's sufficient to ground an outlet only



Self grounding receptacle in a metal box?

I have always believed when using a metal box with a self grounding receptacle, the ground wire from the incoming cable is connected to the ground screw in the back of the box. There

What Happens if You Don't Ground a Metal Electrical Box?

Does Every Metal Electrical Box Need to Be Grounded? Grounding a metal electrical box is required by the National Electric Code. Metal is not the kind of material that



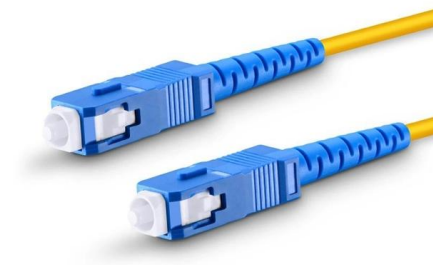
Does ATT fiber need to be grounded?

However, the fiber line itself which comprises optic fiber that is made of glass does not contain any metal and does not pass any electric current will not need to be



NEC Code of Junction Box Requirements Made Simple

If the box opening is less than 8 inches in any direction, each wire must stick out at least 3 inches from the box opening. This extra length helps you make safe and



Industrial Automation Wiring and Grounding Guidelines

Purpose This publication gives you general guidelines for installing an Allen-Bradley industrial automation system that may include programmable controllers, industrial computers, operator

Contact Us

For datasheets, pricing, or custom telecom energy solutions, please visit:
<https://koskolong.co.za>