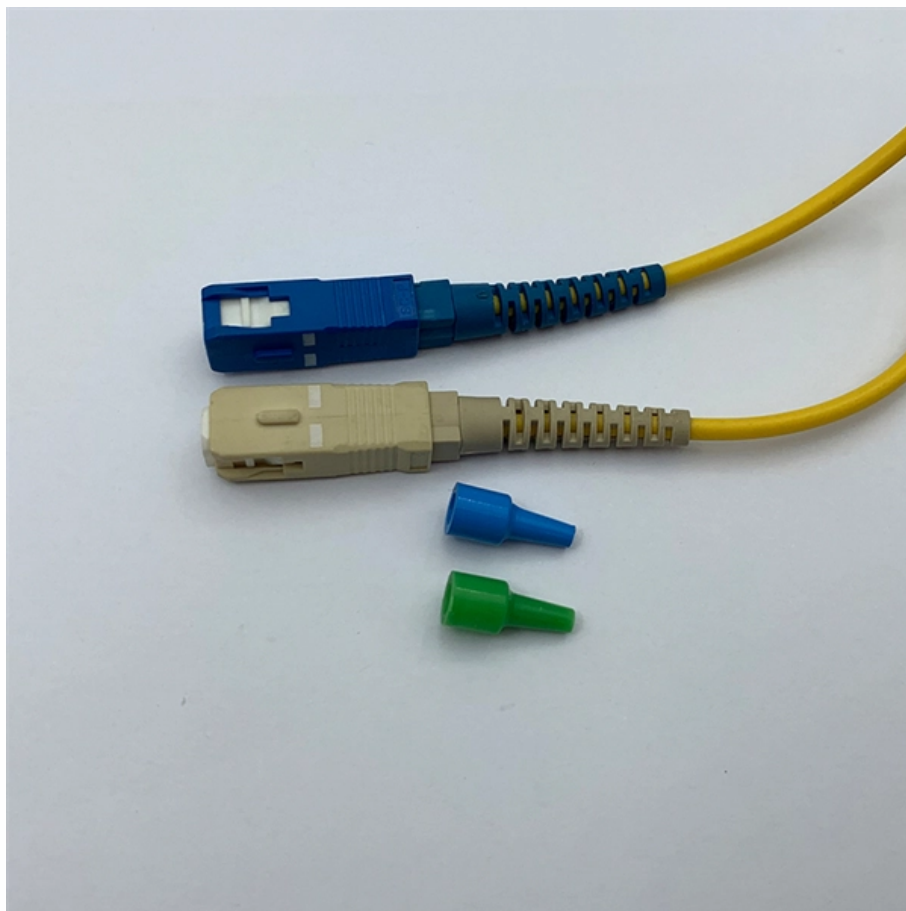




**Adam Tas Corridor Energy**

# Dual-link dual-core switch





## Overview

---

Both switches in the Cisco StackWise Virtual pair must be directly connected to each other.



## Dual-link dual-core switch

---



### Campus LAN Core and Distribution Switches

Cisco Catalyst and Meraki Campus LAN core and distribution switches are scalable, secure network switches with exceptional intelligence.

### Embedded Systems Developer Kits & Modules from

Learn how the Jetson Portfolio is bringing the power of modern AI to embedded system and autonomous machines.



### Dual Core Design

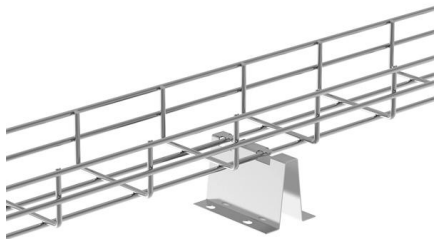
Need clarification on dual core switch design. Should be a pretty easy question, but the dual core design is just 2 core routers instead of one. Is this what they mean by dual core design? Enterprise

### FortiSwitch with dual uplink to both Core (Forti) Switches

Greetings community, We are planning to deploy a Fortigate with 2 Core FortiSwitches (using



mclag-icl). The mclag-icl part is configured. Then we are

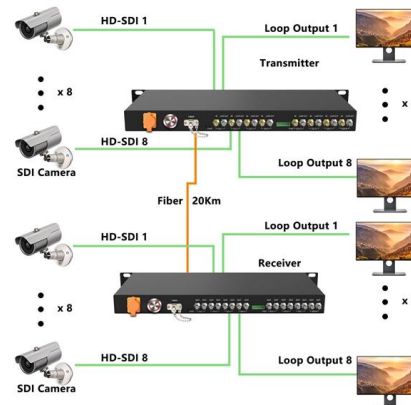


### Dual-Active Detection (DAD) link on VSS

DAD link prevents both supervisors from becoming active in event of a VSL link failure. My question is - do I need DAD link. if I have 4 x 100G ports configured as VSL links? I need other ports

### Tripp Lite 2-Port DVI Dual-Link/USB Desktop KVM Switch with Audio

Tripp Lite's B004-DUA2-HR-K 2-Port DVI Dual-Link/USB KVM Switch with Audio is the perfect solution! It allows you to control 2 computers with a single DVI monitor, USB keyboard and USB mouse, and



### DTMF signaling

Dual-tone multi-frequency (DTMF) signaling is a telecommunication signaling system using the voice-frequency band over telephone lines between telephone



## FortiSwitch with dual uplink to both Core (Forti) Switches

You don't need to do anything for the trunk switches. When you have MCLAG ICL enabled on your core/distribution switches, all of the down-level switches will



## 2 Fiber uplink connection between Core switches

I have 2 core switches (Catalyst 4506 models) in the data center with HSRP Configuration it is both connected with a copper port. And I have another

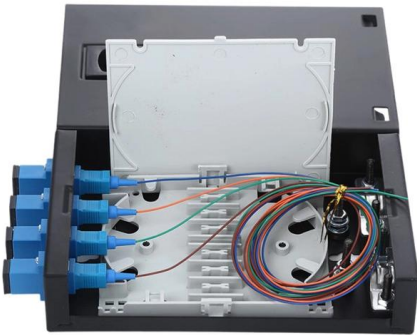
## Core Switch Explained: Key Functions and Benefits

Discover what a Core Switch is, its pivotal role in network architecture, and how it boosts performance and reliability in your data infrastructure.



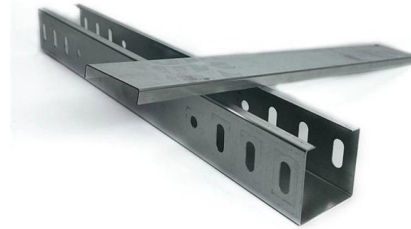
## Cisco Catalyst 2960-X and 2960-XR Series Switches

Power Supply An external redundant power supply option is supported on the Cisco Catalyst 2960-X Series Switches. These switches come with one



## ESP32 Dual Core with Arduino IDE , Random Nerd

The ESP32 is dual core: it comes with 2 microprocessors. In this article we'll show you how to use both ESP32 cores using Arduino IDE by



## Alcatel-Lucent OmniSwitch 6900

Core and Data Centre LAN Switches The Alcatel-Lucent OmniSwitch® 6900 fixed Core LAN and Data Center (DC) switches are compact, high-density 10, 25, 40 and 100 Gigabit Ethernet (GigE)

## Connecting two core switches : r/networking

Hello! We have a Office network and Test lab environment. Office network and Test Lab network is connected via point to point link. Both Office and Lab network have switches in spine





## **ANBERNIC RG35XXSP**

RG35XXSP TECHNICAL SPECIFICATION Color Silver, Gray, Black Transparent, Blue Transparent Screen 3.5-inch IPS full viewing angle, OCA full lamination/

## **IRON LINK 24 Port 10 Gigabit SFP+ Managed Core Switch**

The IL-M4028XF-2AC is a full featured 24 Port 10GbE switch that is perfect for supporting core workloads like multi-server deployments and edge switch



## **MikroTik - Switches**

This switch is your next leap forward - a powerful, efficient, and cost-effective way to bring 50G, 200G, and 400G into your rack. Quad-core 2 GHz ARM CPU, dual

## **Core layer , FortiSwitch 7.6.0 , Fortinet Document Library**

With 8x100-GbE QSFP28 slots per FortiGate unit, it provides enough capacity to directly connect with 2x100-GbE ports to each of the two core FortiSwitch units at a nonstop forwarding capacity of up to



### Re: FortiSwitches as a single logical core stack w

2 Core FortiSwitches independently managed by each switch IP (Core 1 and Core 2). Both switches routing using VRRP between themselves to host the L3 IPs (Core 1 and Core 2). Both

### Amazon : Power Tools

Explore cordless power tools with batteries and chargers included. Perfect for DIY, home repair, and professional use.



### Chassis-Based Switches

Using a common set of modules for 10/100/1000BASE-T ports, PoE support, SFP, and 10-Gigabit uplinks, IT personnel can fit a DES-7200 series switch with different port types and deploy it either as



## Recommendations: Dual Core Switch for redundancy.

Have both CORE switches have a route via each link to the firewall and control the preferred path with OSPF cost. Also add a trunk group ether



## EOS 4.36.0F

A Multi-chassis Link Aggregation Group (MLAG) is a pair of links that terminate on two cooperating switches and appear as an ordinary Link Aggregation Group (LAG).

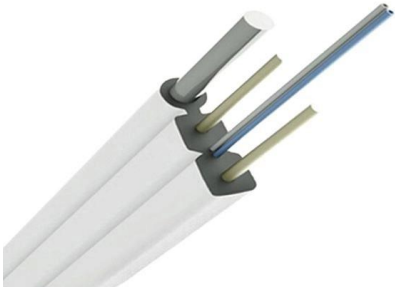
## Dual-Active Detection (DAD) link on VSS

On C9500-32C switches, you can configure SVL and DAD only on interfaces numbered 1-16 on the front panel of the switch. On C9500-32QC, you can configure SVL and DAD only on native



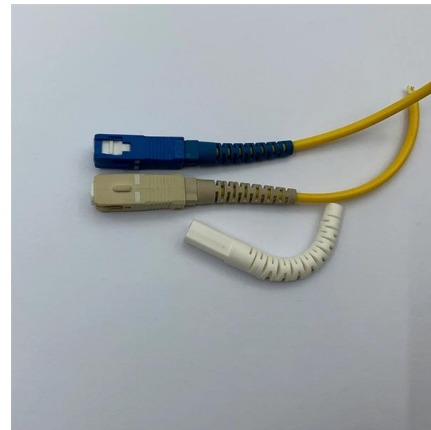
## MokerLink 48 Port Gigabit Ethernet Switch with 2 SFP Port, Dual

About this item Gigabit Ports: 48 gigabit ethernet ports, 2 gigabit SFP ports, switching capacity is 112Gbps, each port can reach 1G rate at the same time, with higher data throughput. 8K Mac



## L2 SWITCHES

L2+/Lite L3 10G Multi-Gigabit Ethernet Switch  
The Edgecore ECS5500-12P switch is a 10G Ethernet access switch with 8 x 10GBASE-T ports and 2 x 10G SFP+/2 x



## ANBERNIC RG DS

About the RG DS With dual screens, a precise touch pen, and Android 14 power, RG DS redefines portable gaming with an unmatched, immersive experience.

## Support

The following information provides an example for configuring dual-uplink interfaces to provide increased link bandwidth and load sharing. The document applies to Comware-based access controllers and





## Contact Us

---

For datasheets, pricing, or custom telecom energy solutions, please visit:  
<https://koskolong.co.za>