



Adam Tas Corridor Energy

Dual network cable single fiber optic panel





Dual network cable single fiber optic panel

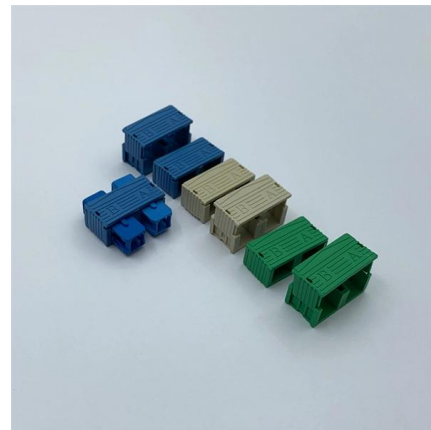


Fiber Optic Patch Panel: 10 Best Options for

Discover the best fiber optic patch panel options for 2024. Learn how to choose, install, and maintain your fiber network for

Single Fiber vs Dual Fiber Transceivers Understanding

Single fiber transceivers optimize fiber usage and simplify cable management, making them ideal for networks with limited resources. Dual fiber



Fiber Optic Hardware , Fiber Panels, Housings, Racks, and

Corning has a wide variety of hardware solutions to choose from to fit your cabling needs. Choose from racks, panels, modules, splice trays, ethernet fiber switches and other structured cabling components.

Connection between two optic fiber patch panels

The same logic applies as for any other type of patch panel. Two lines are needed for each pair



of switches with a duplex SFP, making it 4 drop cables in total between the patch panels. Also the drop

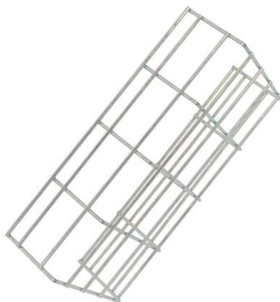


Product Type

Frames, Panels, Cassettes & Modules Frames, Panels, Cassettes & Modules ensure superior protection, reliability and scalability for your indoor networks.

Structured Cabling Solutions

ICC is a structured cabling solutions manufacturer of copper & fiber optic connectivity products for commercial & residential applications.



Fiber Optic Cable Types Explained: Choosing the Right

In high-speed network environments--such as data centers, enterprise LANs, and telecom backbones--fiber optic cables are critical in



Single Fiber vs Dual Fiber: How to Choose the Right

This article compares single-fiber and dual-fiber solutions and provides practical guidance for selecting the appropriate structure based on network

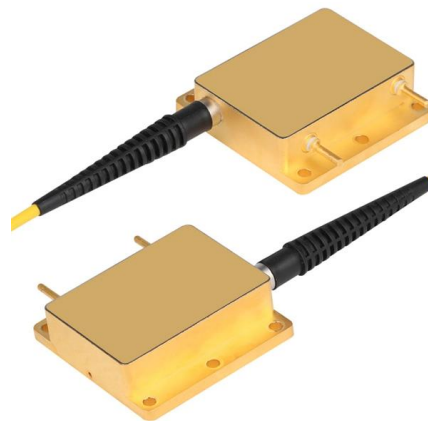


Choosing the Right SFP: Single Fiber vs Dual Fiber

Limited Compatibility Not all network devices support single fiber SFPs. Compatibility checks are essential before deployment. What Is a Dual

Understanding Fibre Optic Cables & Types with Network

This video provides a real world overview of using Fibre Optic cables in the data centres for connectivity between network switches and patch panels. 00:09 Fibre vs Copper cables 01:34 Fibre



Optical Fiber , Optical Fiber Products , Corning

Optical fiber broadband brings together a culture of innovation, quality, and manufacturing excellence to create life-changing products.



Single vs. Dual Fiber: How to Choose the Right Cable for Your Network

Choosing the right fiber optic cable is essential for optimizing your network setup. In this video, we'll explore the differences between single (simplex) and dual (duplex) fiber cables, helping



MPO Single-Mode Fiber Patch Cords: OS1 and OS2

Overview of MPO Single-Mode Fiber Patch Cords
MPO (Multi-fiber Push-On) single-mode fiber patch cords are high-density optical interconnect

How to Connect Multiple Ethernet Switches Using Fiber

BiDi SFP modules, also known as BiDirectional Small Form-factor Pluggable modules, are optical transceivers used in fiber optic networks. These





Fiber Optic Patch Panel Types & Best Practices

Explore Fiber Optic Patch Panel Types, Rack-Mount & Wall-Mount Panels, Connectivity Options, Troubleshooting, Upgrades, and Best Practices.

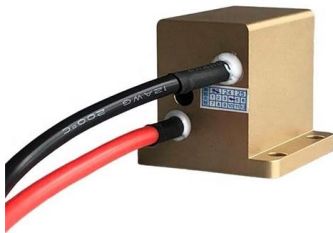
Optical fiber connector

An optical fiber connector is a device used to link optical fibers, facilitating the efficient transmission of light signals. An optical fiber connector enables quicker



Fiber Optic Hardware , Fiber Panels, Housings, Racks, and

Corning has a variety of hardware solutions including ethernet fiber switches, panels, racks, splice trays, and other structured cabling components.



Fiber Optic Adapter Panels - Singlemode, Multimode

During your Fiber Optic Cable network installation, remember the necessity for a clean install. Take a look at Fiber Savvy's Fiber Cleaners and Fiber Cable Management accessories. Have questions?



An Extensive Library of Self-Developed Products



Fiber Patch Panels: A Beginner's Guide , RLH

Fiber optic patch panels are enclosures that act as a distribution hub for fiber cable. A bulk (multi-strand) fiber cable enters the patch panel and then each fiber strand

Single vs. Dual Fiber Networks

Compare single fiber vs dual fiber networks for utility deployments. Learn cost, performance, scalability, and last-mile design trade-offs.



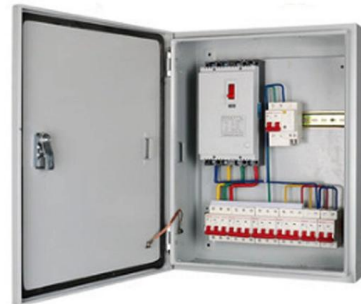
Fiber Panels, Modules & Cassettes

Explore CommScope's efficient and scalable fiber splice panels designed for seamless connectivity. Accommodating LC, SC, and MTP/MPO connectors,



Fiber Optic Panels

Our fiber patch panel offers options for flexible cable management and seamless integration with various cassettes and fiber optic accessories.



Difference Between Single and Dual Fiber Optical

Know the key differences between Single and dual-fiber optical transceivers for efficient network deployment and optimization.

Search

Search Up to 36% lower carbon footprint than standard plastic cable ties Globally, only 9% of plastic waste is recycled, and by 2050, up to 12 billion tons could pollute our landfills, waterways, and



Single Fiber vs Dual Fiber: How to Choose the Right

Dual-fiber bidirectional Mux is a key component in dual fiber systems and is commonly deployed in long-distance, high-capacity optical networks, such



Fiber Optic Cables

Fiber Optic Cables, Adaptors, & Accessories Our extensive offering of fiber optic cables, connectors, cassettes, enclosures, patch cords, cable assemblies, cable



What Is A Single-Fiber BiDi Transceiver?--ETU-LINK

When planning a fiber optic network, one key decision is choosing between single-fiber (BiDi) and dual-fiber optical transceivers. This guide from ETU-Link explains

Single vs. Dual Fiber: How to Choose the Right Cable

In this video, we'll explore the differences between single (simplex) and dual (duplex) fiber cables, helping you make an informed decision for your next





Light Reading

Light Reading is the leading source of news analysis for communications industry professionals.

Contact Us

For datasheets, pricing, or custom telecom energy solutions, please visit:
<https://koskolong.co.za>