



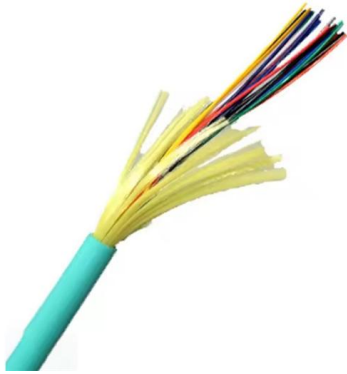
Adam Tas Corridor Energy

Dutch Anti-tracking Optical Cable G 654





Dutch Anti-tracking Optical Cable G 654



Ultra-low loss terrestrial long-haul fibers PureAdvance(TM) series

Ultra-low loss (ULL) optical fibers, PureAdvance(TM) series compliant with G.654.E, support high-capacity long-haul terrestrial networks. Employing pure silica core technologies, we promise to contribute to

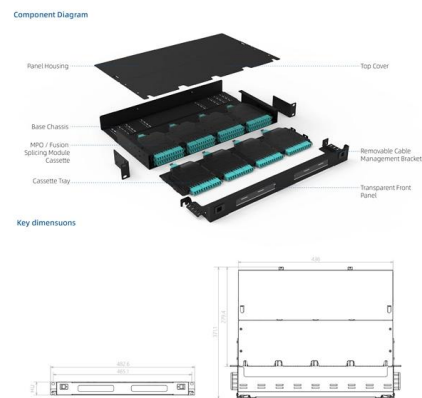


Optical cable with ITU-T G.654.E fibre removes barriers to delivering

Their solution combines two existing fibre grades

ITU-T Rec. G.654 (07/2010) Characteristics of a cut-off shifted, single

Summary Recommendation ITU-T G.654 describes the geometrical, mechanical and transmission attributes of a single-mode optical fibre and cable which has the zero-dispersion wavelength around

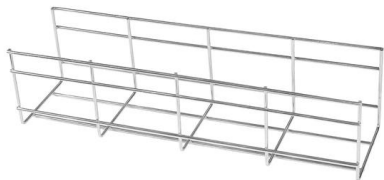


Optical Fiber G652, G657A, G655, G654

G654: Ultra-low loss optical fiber, mainly used for transoceanic optical cables. The ordinary core is pure SiO₂, and the ordinary core needs to be doped with



to provide a cable solution that enables longer transmission distances, higher data rates per wavelength, and reduced infrastructure requirements -



ITU-T Rec. G.654 (12/2006) Characteristics of a cut-off shifted single

Table 1, G.654.A Attributes, is the base category for a cut-off shifted single-mode optical fibre and cable. This category is suitable for the system in ITU-T Recs G.691, G.692, G.957 and G.977 in the 1550

Terrestrial Long-Haul

Product Downloads Technical Review ,
PureAdvance(TM) , Ultra-Low Loss ITU-T G.654.E
Downloads



G.654.E optical fibers for high-data-rate terrestrial transmission

Request PDF , On Jan 29, 2018, John D. Downie and others published G.654.E optical fibers for high-data-rate terrestrial transmission systems with long reach , Find, read and cite all the research



STL G654E 125 Fibre

International Standards STL G654E 125 Fibre complies or exceeds the recommendation of ITU-T G.654.E.

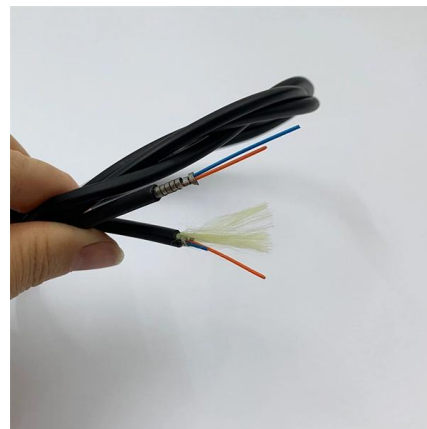


What is G.651,G.652,G.653,G.654,G.655,G.656 and

These are the standard types of optical fibers specified by ITU: G.651 is a multimode optical fiber.

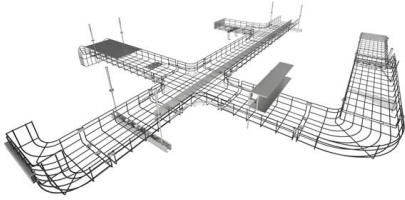
G.654 : Characteristics of a cut-off shifted single-mode optical

Characteristics of a cut-off shifted single-mode optical fibre and cable Superseded



G654.E Fiber Optic Cables

Huihong Technologies Limited is a trusted and professional manufacturer specializing in G.654.E fiber optic cables, meeting the demands of cutting-edge



Difference between G652 fiber and G654 fiber

G.654 optical fiber is mainly used in submarine cable communication systems. In order to meet the needs of long-distance and large-capacity



G.654.E Optical Fiber: Low-Loss, Large Effective Area

Compared to standard G.652.D fiber, G.654.E offers superior bend resistance and lower chromatic dispersion, making it ideal for 400G/800G



The difference between G.654 and G.652 optical fiber

G.654 and G.652 are two different types of optical fibers that are commonly used in fiber optic jumpers. While they share many similarities, there



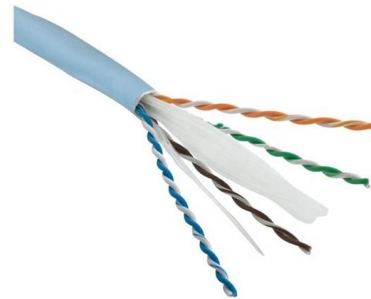


Optical Fiber Types & Standards , G652D, G657A2,

This guide explains different optical fiber types including G652, G657, and OM1-OM4. Learn how to choose the right fiber optic cable for telecom,

High-Speed Long-Haul Optical Fiber Solution

When deploying G.654.E fiber, careful installation, connector compatibility, testing, and future-proofing considerations should be taken into account. By leveraging the features and benefits



The Difference Between G652,G657A,G655 And G654

Optical cables are engineered to meet strict optical,mechanical,and environmental performance standards for reliable long-term operation. Optical

High Speed Long-Haul Optical Fiber Solution

G.654.E single-mode fiber is deemed as a promising candidate to optimize the transmission performance for next-generation ultra high-speed long



ITU-T G.654.E Fiber, PureAdvance for Terrestrial Long-Haul Networks

0.16 dB/km or less, which are fully compliant with ITU-T G.654.E. In this whitepaper, we review ITU-T G.654.E fibers from various points of view; what G.654.E is, what the application of G.654.E is, why



What is G.654.E fibre? What scenarios is it suitable for?

At present, the operators in the inter-provincial and intra-provincial trunk cable construction, the use of G.654.E optical fibre cable length of nearly 15,000 km,



TXF® Optical Fiber , G.654.E Fiber , Corning

The superior attributes of TXF® optical fiber, compliant to ITU-T G.654.E, allow for the provision of an additional network margin that can be leveraged to enable reliable, high-data-rate transmissions over





STL G654E 125 Fibre

To ensure the accuracy and precision of the manufacturing process, STL routinely calibrates and recertifies process equipment and measurement benches against internationally traceable standards



GL FIBER® G.654.E Bend-Insensitive Fiber

G.654.E fibre is featured with larger effective area and lower attenuation than normal fibre, and more suitable for long-haul transmission with high capacity and speed rate.

G.654 Fiber Specifications Overview , PDF , Optical

Fiber Selection Guide_G652, G654, G655 - Free download as PDF File (.pdf), Text File (.txt) or read online for free.



Introduction to

Optic fiber is the key to fiber optic network. What is fiber optic network? There are seven kinds of optic fiber according to ITU standard: G651, G652,



ITU-T RECOMMENDATION G.654

Characteristics of a 1550 nm wavelength loss-minimized single-mode optical fibre cable
Reedition of CCITT Recommendation G.654 published in the Blue Book, Fascicle III.3 (1988)
NOTES



TXF Optical Fiber , Large Effective Area G.654.E Fiber

The superior attributes of TXF[®] optical fiber, compliant to ITU-T G.654.E, allow for the provision of an additional network margin that can be leveraged to enable

Contact Us

For datasheets, pricing, or custom telecom energy solutions, please visit:
<https://koskolong.co.za>