



**Adam Tas Corridor Energy**

# **Dutch-certified wall-mounted patch panel with 6 cores**





## Dutch-certified wall-mounted patch panel with 6 cores

---

### Amazon : Wall Mount Patch Panel

Patchpaneel Cat 7, 1U 12 poorten, 10 inch Keystone Patchpaneel, LSA-verdelerveld, RJ45 afgeschermd Keystone Koppeler, compatibel met Cat 7/6A/6/5e en Cat5 netwerkkabels, voor



### Wall-Mounted Fiber Patch Panel , High-Density Fiber Optic Solutions

A wall-mounted optical fiber patch panel is a compact, organized solution for managing and distributing fiber optic connections. Typically constructed from durable materials, it features



**MPO-MPO** Low Smoke Halogen Free Sheath

Multimode 10 Gigabit 24 pole OM3

Insertion loss <0.35dB Return loss >50dB

### Buy patch panels in various configurations

At our online shop, you will find a comprehensive selection of premium-quality patch panels, available in standard 10U and 19U formats with various port configurations.

### Wall-Mount Panel

Belden offers clean, simple, and lightweight Wall-Mount Panels within its DCX, FiberExpress (FX) UHD and ECX ecosystems. The versatile DCX



### CAT6 UTP Wallmount Patchpaneel

Een patchpaneel bestaat uit meerdere poorten die voorzien zijn van een nummer



### 6 Cores Wall Mounted Socket Panel

The 6 Cores Socket Panel optimizes data flow by allowing multiple connections, minimizing signal loss, and supporting high-speed data transmission. This efficiency makes it a suitable choice for fiber optic



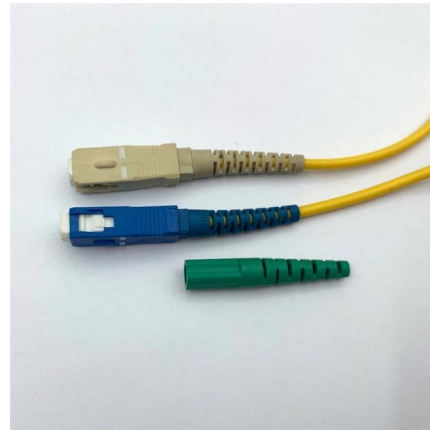
### Rackmount or Wallmount 24-Port Cat6A Shielded RJ45

Cable Matters 24-Port Shielded Cat 6A Patch Panel can be mounted in a 19" rack. It supports Category 6A performance in compliance with the ANSI/TIA/EIA 568-C.2



## Patch Panels , Leviton Network Solutions

Leviton offers the industry's largest selection of high-quality copper and fiber optic patch panels to support the latest technologies and provide ideal configurations

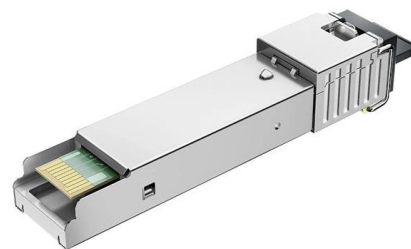


## TRENDnet 24-Port Cat6 Unshielded Patch Panel,

These patch panels are certified for 250Mhz Category 6, which are perfect for Copper Gigabit Ethernet connections. TRENDnet's 24-port Cat. 6 Patch Panels

## [UL Listed] Rackmount or Wallmount 24-Port Cat6 RJ45

Effortless Installation in Universal Racks: This 1U patch panel fits easily into 19" racks, cabinets, or wall-mount brackets, offering a 1U (1.75") standard height for



## Best Patch Panels for Cat6 , Firefold

Shop for the latest patch panels for cat6 with 12, 16, 24, 48 to 96 ports. Top brands - ICC, Quest, Tripp Lite, Vertical Cable. Easy Installation.



### Wall Mounted 2 Cores Patch Panel

Wall Mounted 2 Cores Patch Panel SS-2Cores-122  
2 cores fiber patch panel can hold up to 1  
subscriber. It is used as a termination point for  
the drop cable to



### High-quality, high-performance data- comm products that

12 Port CAT6 Wall Mount Patch Panel - 1U NP-  
C612ST-W CAT6 Patch Panels from Networx®  
will maximize your network performance and will  
keep up with even the

### Legrand AV , On-Q WP246A Cat6a 24-Port Rack Mount Patch Panel

Uncover On-Q WP246A 24-port Cat6a patch  
panel with clear numbering and robust  
terminations as digital media demands grow.  
Explore more.





## CAT6A Network Patch Panels

What is a patch panel? Patch Panels CAT6a are designed to accommodate high speed, high density applications where networking space is at premium quality.

## Copper Patch Panels

\$10.40 Allen Tel AT55HM-3 Patch Panel Hinged Wall Mount Bracket, 2 RU \$67.05 Allen Tel AT55HM-7 Patch Panel Hinged Wall Mount Bracket, 4 RU \$91.95 Allen



## Rack Mounted & Wall Mounted Fiber Patch Panel SC

Fiber Optic Patch Panels also called fiber optic termination box, can be categorized into Pre-Loaded Fiber Optic Patch Panels and Unloaded patch panels, Most of

## Spec Sheet

DIN Rail Mounted Patch Panels Regional Availability -- Global DIN Rail Mounted Patch Panels provide an effective solution for industrial networks inside control panels and distribution cabinets where DIN



## Types of RJ45 Patch Panels: How to Select the Suitable

This article is an Ethernet patch panel buying guide giving a description of the common RJ45 to RJ45 patch panels based on different factors:



### directory-list-2.4.txt/directory-list-2.4.txt at main

bestutsengineer / directory-list-2.4.txt Public Notifications You must be signed in to change notification settings Fork 0 Star 6



## Patchpanelen Cat6

Net als bij Cat 5e patchpanelen, hebben Cat6 patchpanelen poorten waar de uiteinden van de Cat6-kabels in worden gestoken. De poorten zijn vaak gecodeerd met verschillende kleuren om





## trueCABLE's Shielded Wall-Mounted Patch Panel

Discover trueCABLE's 12-port shielded wall-mounted patch panel. Features, compatibility, and step-by-step install guide for small business and



## 12-Port Cat6A Shielded Wall Mount Patch Panel

TRENDnet's 12-Port Cat6A Shielded Wall Mount Patch Panel, model TC-P12C6AS, is ideal for gigabit and 10G Copper Ethernet network applications. This patch

## Shielded 24-Port CAT 6A Patch Panel - Rack Mount, 1U

Shielded 24-Port CAT 6A Patch Panel is an excellent choice for both home and commercial networks. This patch panel features 24 shielded, flush-mounted RJ45 keystone jacks for high-performance



## 6 Cores Wall Mounted Socket Panel

Installed this wall-mounted socket panel for my office network, and it's been a game-changer! It connects smoothly with our Alcatel-Lucent fiber equipment, making everything neat and efficient.



### **Intellinet Cat6 Wall-mount Patch Panel (560269)**

This patch panel offers convenient access to ports and can be mounted to a wall,

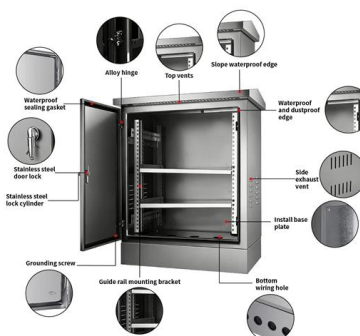


### **Wallmount patchpanelen kopen? Gemakkelijk online bestellen**

Onze muur patchpanelen zijn beschikbaar in Cat5e, Cat6 en Cat6a, en bieden betrouwbare en snelle netwerkverbindingen voor je apparaten. Op zoek naar een voordelige Wallmount patchpanelen?

### **Patch Panel Manufacturer & Supplier in Netherlands**

Blank shielded patch panel from Norden exceeds TIA and ISO component specifications, supporting network convergence protocols, delivering max bandwidth and extended reliability for all LAN,





### **8-Port Cat6A Shielded Wall Mount Patch Panel**

TRENDnet's 8-Port Cat6A Shielded Wall Mount Patch Panel, model TC-P08C6AS, is ideal for gigabit and 10G Copper Ethernet network applications. This patch panel

## **Contact Us**

---

For datasheets, pricing, or custom telecom energy solutions, please visit:  
<https://koskolong.co.za>