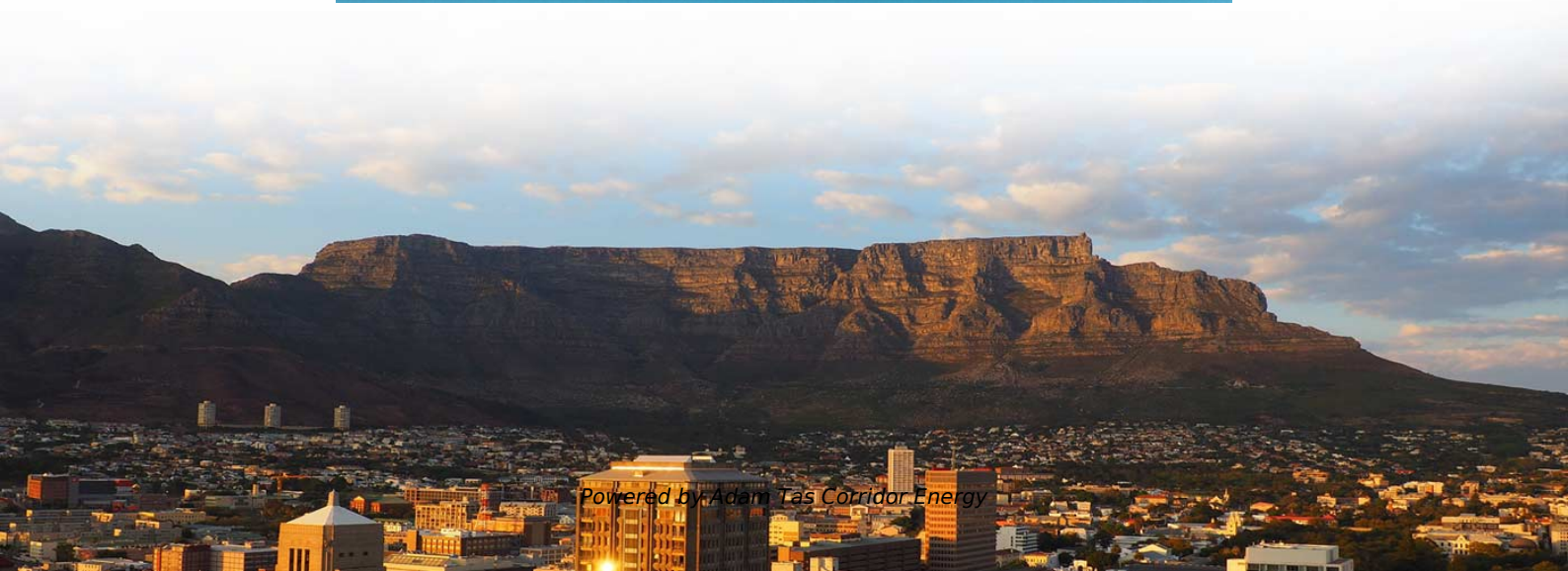
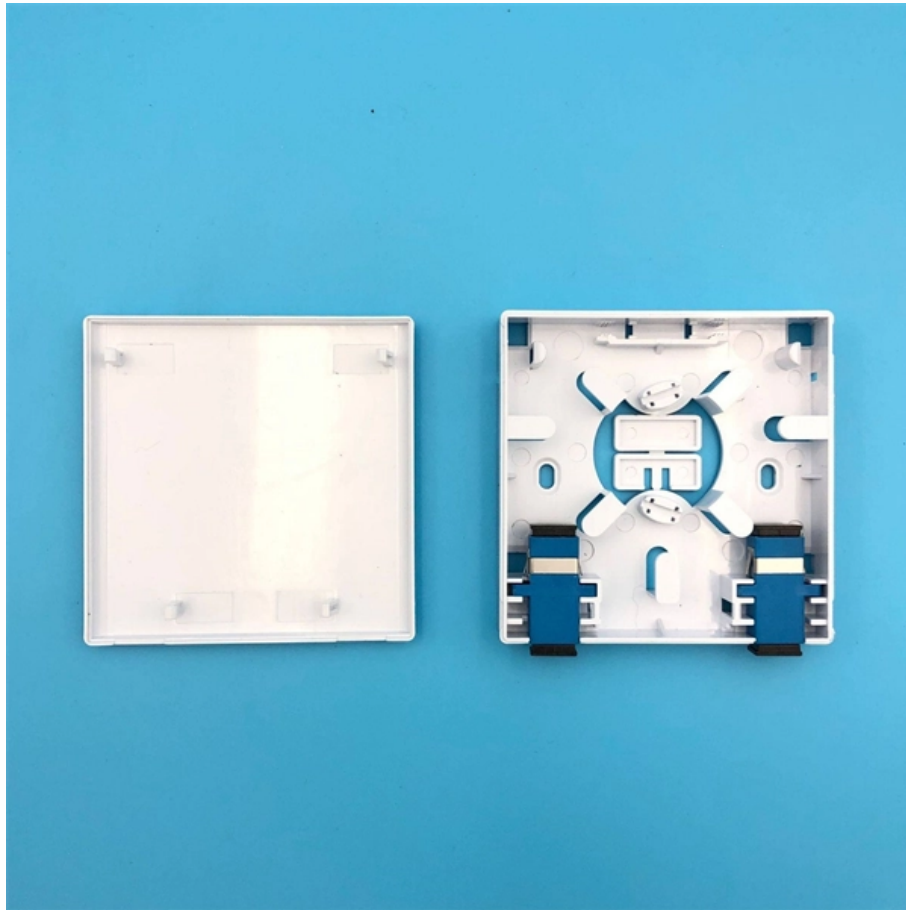




**Adam Tas Corridor Energy**

# **Electrical Distribution Box Material Standard Number**





## Electrical Distribution Box Material Standard Number

---

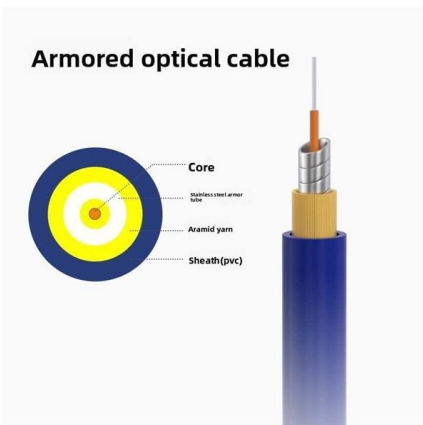


### What Is an Electrical Distribution Box? A Complete Guide

An electrical distribution box is a centralized unit responsible for distributing electrical power across multiple circuits within various environments, including residential,

### Distribution board

A distribution board (also known as panelboard, circuit breaker panel, breaker panel, circuit breaker, electric panel, fuse box or DB box) is a component of an electricity supply system that divides an



### Design requirements and standards for low voltage

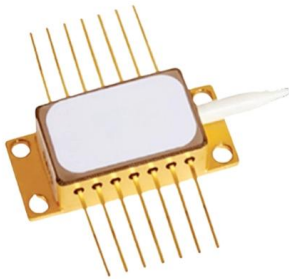
You must make safety your top priority when working with low voltage distribution boxes. Design requirements help you follow important standards like

### Distribution board

The box pictured top-right is a "Wylex standard" fitted with rewirable fuses. These boxes can also be fitted with cartridge fuses or miniature circuit



breakers (MCBs).

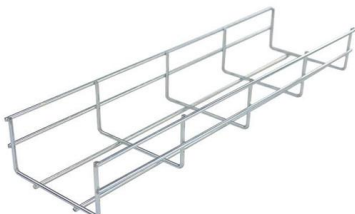
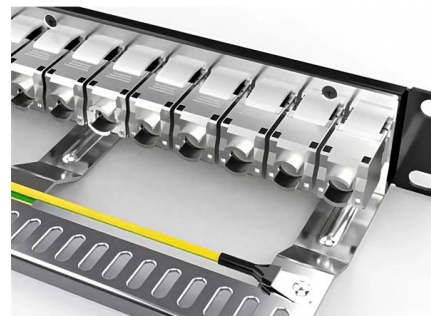


### Distribution boards components

Distribution boards (generally only one in residential premises) usually include the meter (s) and in some cases (notably where the supply utilities impose a TT earthing system and/or tariff

### UNDERGROUND ELECTRIC DISTRIBUTION CONSTRUCTION STANDARDS

The Builder shall keep the premises, right-of-way and adjacent property free from accumulations of waste materials, rubbish and other debris resulting from the work, as well as all tools, construction



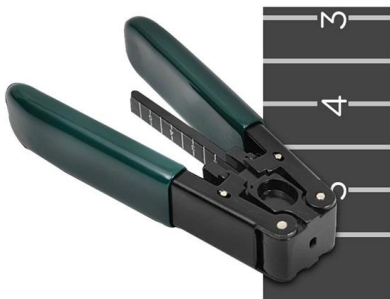
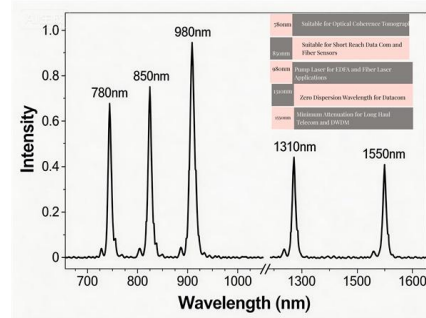
### Electrical

Electrical - Building material and construction product manufacturers organized by the product or the material into CSI masterformat categories.



## Key Material Requirements for Distribution Box

Learn the key material requirements for distribution box, Discover how the right materials ensure long-lasting performance and safety.



## Best Material for LV Distribution Box , Axis Electricals

Learn which material is ideal for your LV distribution box. Axis Electricals explains how to choose the right enclosure for safety, durability, and

### mbox\_om.pdf

They are used for switching, protection and power distribution circuit breakers installation. Metal distribution boxes are designed for both built-in and on-wall applications.

### STAINLESS STEEL WIRE MESH

- Long-lasting and durable
- Comprehensive specifications
- Customized non-standard products



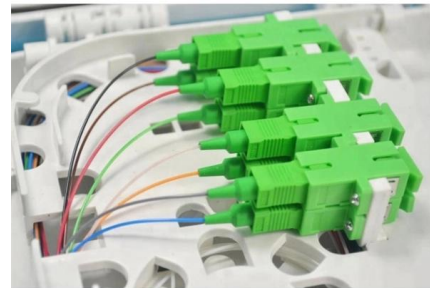
## 1.An Ultimate Guide for Metal Distribution Boxes

1) Metal Distribution Boxes Constructed from steel, aluminum, or cast iron, metal distribution boxes are highly durable and resistant to mechanical damage. Ideal



## NEC Reference Metallic Boxes

NEC® Reference Article 314 of the National Electrical Code® covers the installation and use of boxes. The article includes table references that guide the electrician in the selection of the proper box size



## Circuit Numbering and Labeling for Electrical Equipment

LLNL-MI-823076 This standard describes requirements for numbering and labeling of real property electrical distribution equipment, circuits, and site lighting at Lawrence Livermore National Laboratory.

## What Is a Distribution Box?

In Conclusion Most residential and commercial electrical systems have at least one distribution box. A distribution box is a device that, as the name





## The installation requirements for the distribution box

Learn how to install a distribution box safely and correctly. Covers wiring, placement, standards, and expert tips for a compliant setup. A distribution

### Distribution Box

Plastic Electrical Box, also known as a consumer control unit or electricity control unit. It is a device that is a type of distribution board that helps in protecting



### Electrical

No labeling required for raceways with readily identifiable terminations within the same room In accessible ceiling spaces and exposed in unfinished areas, label conduit with panel and circuit

## TECHNICAL SPECIFICATION I.R.O. 63,100,160 & 315 KVA

Distribution Boxes shall have Isolator (Switch Disconnecter) on incoming circuit and Porcelain CUTOUT fuse base disconnecter on outgoing circuits with necessary interconnecting Bus Bars.



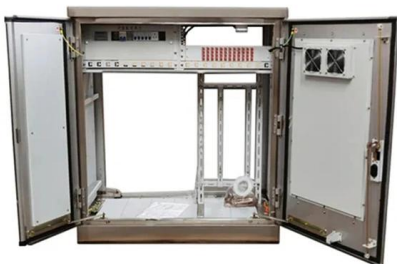
### What Are the Main Materials Used in Distribution Boxes

Distribution box material options include steel, aluminum, PVC, polycarbonate, and SMC, each offering unique benefits for safety and durability.



### 26 05 33.16 Boxes for Electrical Systems

Section 26 05 33.16 - BOXES AND COVERS FOR ELECTRICAL SYSTEMS . 26 05 33.161/2025.  
Specifier Notes: This product guide specification is written according to the Construction



### What is an Electrical Distribution Box? A

From simple residential distribution boxes to complex industrial solutions, MOREDAY designs products that meet rigorous standards. Our boxes



## **mbox\_om.pdf**

All our boxes are 1mm thick metal and each part is powder-coated for corrosion protection. The doors are versatile and can be used on either the left or right side. In addition, for flexibility, the cable entry



## **Electrical enclosure**

Materials Electrical enclosures are usually made from rigid plastics, or metals such as steel, stainless steel, or aluminum. Steel cabinets may be painted or

## **Underground Electric Distribution Standards , Reference Materials**

JEA is responsible for approval of materials and the design standards used in the construction of its electric infrastructure.



## **Distribution Boards & Consumer Units**

Neutral and Earth terminal bars are provided as standard. The front steel cover is fitted with a transparent flap for visual inspection. The front cover mounting screws are located behind the



## Contact Us

---

For datasheets, pricing, or custom telecom energy solutions, please visit:  
<https://koskolong.co.za>