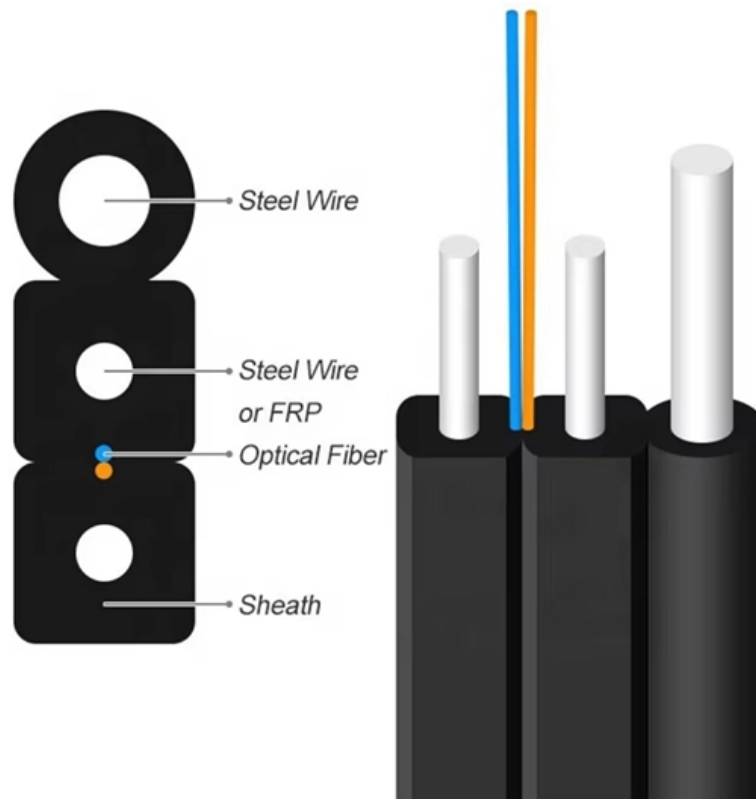


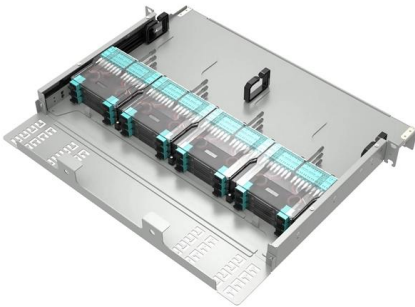


Electronic version of the mesh cable tray inspection report





Electronic version of the mesh cable tray inspection report

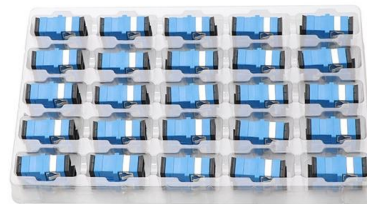


Inspection of Cable Tray Support Structures and Fixings

Cable tray support structures and fixings are a critical component of electrical systems and installations, playing a vital role in maintaining the integrity and safety of these systems. The inspection of these

2002-2026 Form DA 7466-R

Regular inspections help identify potential issues before they escalate, ultimately avoiding costly repairs and safety hazards. By employing a cable



REPORT-1

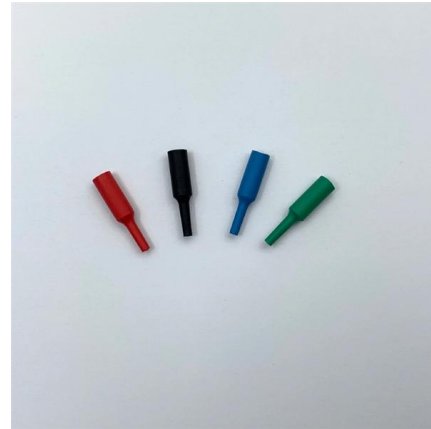
This report sets forth solely our findings with respect to the test samples identified herein, It includes all of the test requested by you and the results thereof based upon the information that you provided us

Cable Tray Inspection Checklist , PDF

This document is a checklist for the inspection of cable trays used in a project. It includes various



criteria such as the make, type, size, and thickness of the cable



Cable Tray Inspection & Testing Format / Sample Form

Cable Tray Inspection & Testing Form Discover more from Method Statement HQ Subscribe to get the latest posts sent to your email.

Cable Tray and Conduit Inspection Report

All braces and supports adequate to handle weight of tray and Flexible conduit with proper bending radius and whit standard cable. fittings. Metal junction boxes leveled and supported per drawings



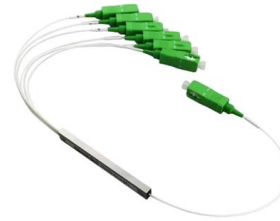
Cable Tray Inspection Record Template

This document is an inspection record for cable trays and ladders used on a construction project. It lists 10 items to be inspected, including verifying the



Inspection Methods for Cable Trays: A Comprehensive

Cable trays play a crucial role in ensuring the safety and efficiency of electrical and communication systems. With their responsibility to manage cables



Aramco Cable Tray Inspection Guidelines

The document is a checklist for inspecting cable tray materials upon receiving. It lists acceptance criteria for general electrical material requirements and specific

Cable Tray Inspection and Testing Plan

This document provides an inspection and test plan for the installation of cable trays on the Sheikh Jaber Causeway project. It outlines 7 inspection points to ensure



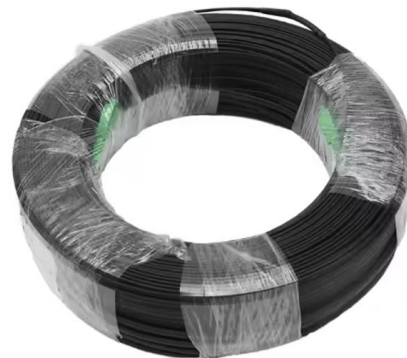
Codes and Standards , Cable Tray Institute

Download VE 2 from the NEMA website (registration required) or purchase a hard copy from Global/IHS.



Cable Tray Inspection and Testing Plan

This document is an inspection and test plan for the installation of cable trays and trunkings at the Paris Gallery area of Marina Mall in the United Arab Emirates. It



GUIDE CABLE TRAYS TECHNICAL

NEMA VE 1-2017 Specifies requirements for metal cable trays and associated fittings designed for use in accordance with the rules of Canadian Electrical Code, Part I and the National Electrical Code®

Cable Tray Inspection List

Cable Tray DESIGN BASIS REPORT FOR CABLE TRAY KUMPP (4000 MW) DESIGN BASIS REPORT FOR CABLE TRAY Document No. RINFRA-KUMPP-NEE-2 402 35 170KB [Read more](#)





Ordering information

NO.	1	2	3	4	5	6
Model	SP2001	SP2002	SP2003	SP2004	SP2005	SP2006
Product name	Patch Panel	Patch Panel	Patch Panel	Patch Panel	Patch Panel	Patch Panel
Illustration						
HU	1	2	4	1	2	4
Maximum number of ports	144	288	576	144	288	576
Product size (including module and adapters)	482.0*502*74 mm	482.0*502*781 mm	482.0*502*777 mm	482.0*402*54 mm	482.0*402*781 mm	482.0*402*777 mm
Standard color code	RAL9005	RAL9005	RAL9005	RAL9005	RAL9005	RAL9005
Inventory	2	2	2	2	2	2

Cable Tray Inspection Checklist for Safety and Efficiency

Cable Tray Inspection - Key Technical and Structural Considerations When inspecting cable trays, several technical and structural aspects must be checked

FIELD INSPECTION AND TEST PROCEDURE GENERAL ILC-P1B

REMARKS: Installation of main cable tray only as per attached cable tray layout drawing.



Internal Inspection and Test Report

1) The document is an internal inspection report for cable trays and other materials supplied by Unitech Fabricators & Engineers Pvt. Ltd. to Larsen & Toubro Ltd. for

E

Cable-Tray-and-Conduit-and-Trunking-Installation-Quality-Control-and-Inspection-Report-Form.pdf
 FIELD INSPECTION REPORT Quality Control Form
 INSPECTION



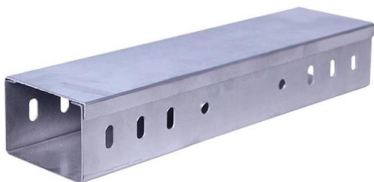
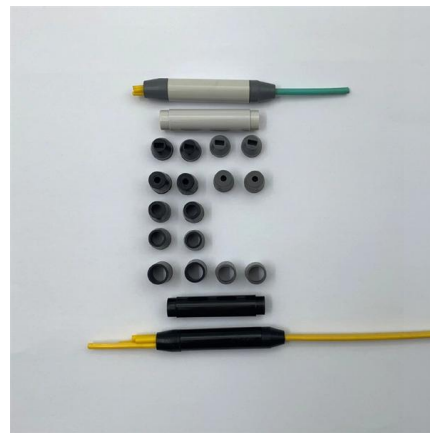


Cable Tray Inspection Checklist , PDF

The document is a pre-commissioning checklist for cable tray works, detailing inspection criteria such as continuity checks, joint integrity, and earthing

Cable Tray Inspection Plan PDF

This inspection and test plan outlines 7 key steps for inspecting cable tray, trunking, and accessory installation for 2 new schools under Contract C/2015/85. The steps include: 1) reviewing

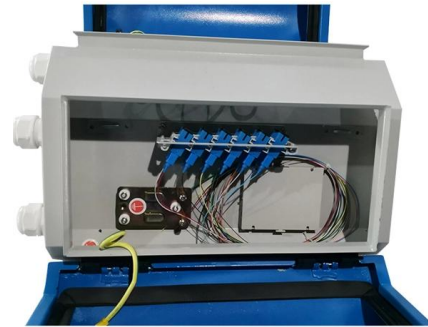


Galvanized Perforated Tray Inspection Report , PDF

The document is a Galvanizing Test Certificate/Internal Inspection Report for ABM Infocom Private Limited, dated December 7, 2024. It details the inspection of various sizes of perforated galvanized

Cable Tray Installation Inspection Report

The document is an inspection and test report for cable tray installation at the 335MW Siddhirganj CCPP Project. It lists 7 items that were checked, including



Mesh cable tray systems

Mesh cable tray systems Mounting instructions © 2020 OBO Bettermann Holding GmbH & Co. KG Reprinting, even of extracts, as well as photographic or electronic reproduction are prohibited! Table



Inspection Methods for Cable Trays: A Comprehensive

In this detailed guide, we'll explore the essential inspection methods for cable trays, focusing on maintaining their structural integrity, load-bearing



Cable Tray Installation ITP Document

This document provides an inspection test plan for cable tray installation on the Riau GFPP 275MW IPP Project. It lists 9 inspection items to check during material





Inspection Test Plan for Cable Tray and Accessories Installation

This article is about ITP (Inspection Test Plan) Plan for Cable Tray and Accessories Installation.



2002-2026 Form DA 7466-R

Purpose and Benefits of Utilizing the Power Cable Inspection Checklist Documenting power cable inspections through a dedicated checklist

TEST REPORT

EASYCONNECT steel wire mesh cable trays on electro plated Zn coating. Representative samples of EC100, EC60 and EC30 series: EC100.200EZ, EC60.100EZ and EC30.100EZ



Cable Tray Handling and Inspection Guide

This document is a checklist for inspecting the storage, handling, and preservation of cable trays and accessories. It lists acceptance criteria for general requirements, storage, handling, and



Cable Tray Inspection Checklist Report , PDF , Wire

The document is a field inspection report for the installation of cable



Cable Tray Inspection Checklist

The document contains electrical mechanical completion check sheets for cable ladder and tray systems for the Wortel Field Development Project. It lists



Contact Us

For datasheets, pricing, or custom telecom energy solutions, please visit:
<https://koskolong.co.za>