



Adam Tas Corridor Energy

Embedded Optical Module Schematic Diagram





Embedded Optical Module Schematic Diagram



Optical Front-End System Reference Design

In test and measurement systems such as optical time-domain reflectometry (OTDR), this averaging feature can lower the noise floor of the entire system, which improves SNR. The system block

? Color online ? Schematic of fully embedded

Download scientific diagram , ? Color online ? Schematic of fully embedded electrical/optical interconnects on a PCB. from publication: 45° polymer-based



Roc Yu MCU Central FAE Team

This application note provides the schematics, PC-board layout, Gerber files, bill of materials (BOM), firmware, and a graphical user interface (GUI); not only for the module but also for the evaluation board.

Optical Front-End System Reference Design

Figure 1 is a detailed block diagram of the evaluation system and subblocks. The system is



an interface of the following four different PCBs. A high-speed laser driver pulses the laser diode that transmits an



Finisar midboard optical transceiver module package:

In this paper we review key technological milestones in system embedded optical interconnects in data centers that have been achieved between 2014 and 2020

Optical Module PCB: The Ultimate Guide to Design, Fabrication, and

It will explore the complete product lifecycle, from design principles and advanced material selection to the intricacies of precision fabrication, electro-optical assembly, and quality validation.



Optical Encoder Circuit Diagram

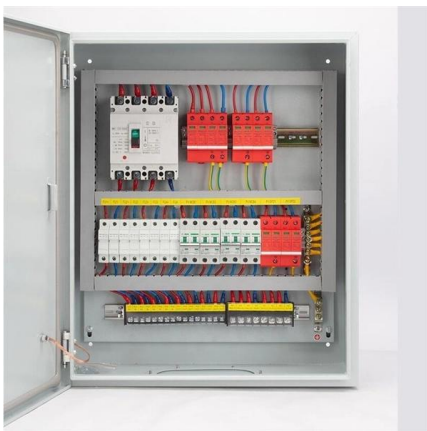
The optical encoder circuit diagram is an intricate and complex system of circuits, wiring, and sensors that are used to read and detect the position of a





What are the Internal Components of an Optical Module?

The following is a block diagram of how an optical module works: The left side of the diagram shows a device that applies an optical module, such



Schematic of board optical layer with embedded WGs

Download scientific diagram , Schematic of board optical layer with embedded WGs and 45-deg reflector mirrors. from publication: Integration technologies for

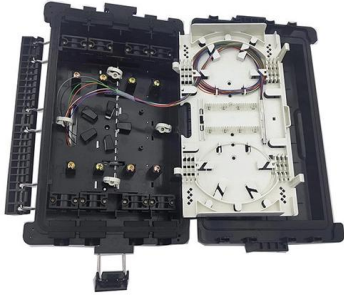
Fully Embedded Board Level Optical Interconnects--From Point-to

Fully Embedded Board Level Optical Interconnects based on Optical Bus Architecture For electrical interconnects, the point-to-point topology has replaced the shared-bus topology because of its



Optical Module PCB: The Ultimate Guide to Design, Fabrication, and

This guide serves as an in-depth resource for engineers, designers, and project managers involved in the development of optical module PCBs. It will explore the complete product lifecycle, from design



A schematic of the optical setup. (A) The illumination

Download scientific diagram , A schematic of the optical setup. (A) The illumination module consists of LED, light pipe, relay telescope (L1 and L2), total internal



LoRa handheld portable base station



Optical module design resources , TI

View the TI Optical module block diagram, product recommendations, reference designs and start designing.

Fiber To The Home schematic diagram based on

Download scientific diagram , Fiber To The Home schematic diagram based on Optical Network Unit and Optical Line Terminal circuits, integrating a laser diode



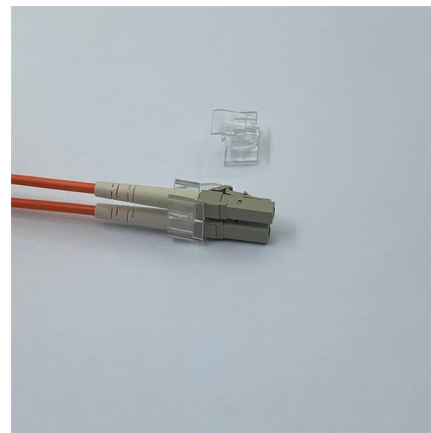


Optical PHY PCB Layout for Gigabit and Faster Ethernet

Challenges in Optical PHY Layout and Routing
The graphic below shows the high-level topology of a multi-lane Ethernet interface that would be

How to Use Optical Sensor: Examples, Pinouts, and Specs

Learn how to use the Optical Sensor with detailed documentation, including pinouts, usage guides, and example projects. Perfect for students, hobbyists, and



The Most Comprehensive Guide Of Optical Modules

Explore the ultimate guide to optical modules. Learn types, functions, performance metrics & how to choose the right module for your fiber network.

How a Tiny, Low-Power MCU Meets the Needs of an

As shown from the block diagram and the previous description, the main advantages of the MAX32660 are its high performance, low-power



TI Optical Module 10G SFP+ Total Solution

ABSTRACT TI 10G optical module SFP+ total solution is a complete demonstrated-working optical transceiver solution targeted for the small form factor pluggable (SFP+).



SFP Reference Design Kit Preliminary Data Sheet (Rev. PrA)

Use of the micro-controller allows flexible module designs support user definable functions. Figure 1. System Block Diagram, Single-ended laser drive version. Information furnished by Analog Devices is



Technical note / Optics modules

1. Overview The optics module is comprised of Si photodiodes, optical components, and current-to-voltage conversion circuit. Our lineup includes filter type spectroscopic modules (C13398 series)





Arduino Motor Encoder (Optical Encoder) Interfacing

Optical Encoder Module Pinout This is the pinout diagram for the optical encoder module that you can use with Arduino as a motor encoder to measure its speed

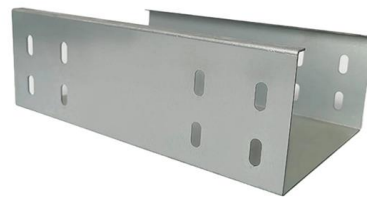


SFP Reference Design Kit Preliminary Data Sheet (Rev. PrA)

Evaluation GUI software Applications Note(AN-706), User Manuals The SFP-RDK consists of Analog Devices' optical transceiver chip set: the ADN2870 dual loop laser driver, the ADN2880/2

Structure diagram of the optical transceiver module .

Download scientific diagram , Structure diagram of the optical transceiver module . from publication: High-Frequency Electromagnetic Interference Diagnostics ,



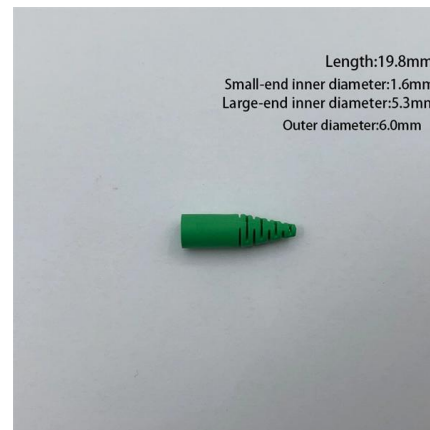
400G Optical Module Block Diagram

Interactive block diagram illustrating multiple Microchip components used in an optical module design



Understanding Optical Modules: Working Principles,

Explore the working principles, structures, and performance metrics of optical modules, essential components of optical fiber communication systems. Learn



Block Diagram: Optical Module , Electronic Components & Devices

Block Diagram: Optical Module The Kyocera electronic components used in an optical module are shown in the block diagram.

Contact Us

For datasheets, pricing, or custom telecom energy solutions, please visit:
<https://koskolong.co.za>