



Adam Tas Corridor Energy

Energy-saving installation solution for fiber optic cable trays in Fiji





Energy-saving installation solution for fiber optic cable trays in Fiji



Master Your Fibre Optic Installation: Step-by-Step Best Practices

This comprehensive guide delves into the intricacies of fiber optic installation, exploring topics ranging from cable types and pre-installation considerations to execution, safety protocols,

Advances in Improving Energy Efficiency of

Besides implementation in mobile cellular networks, the integration of fiber optics and wireless technology in access networks through the combination



Fiber Optic Cable Installation Overview - Fosco Connect

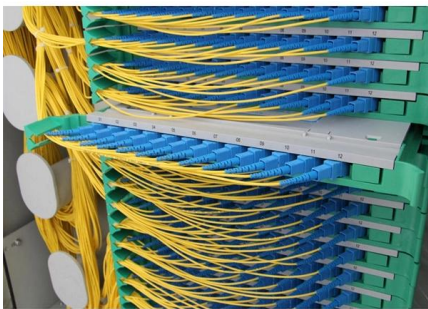
Fiber optic cables are commonly installed indoor and outdoor for inside and outside plants in LANs, MANs and WANs. This article describes some of the common

Fiber Cable Trays

Our Fiber Cable Tray System is a comprehensive raceway solution for data center, enterprise, central office, and mobile switching center



applications. Designed to

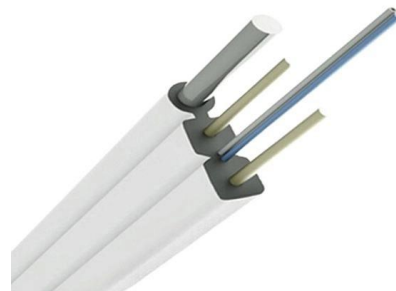


Importance of Cable Trays

Importance of Cable Trays As data demands grow and networks evolve, the physical infrastructure that supports fiber optic systems becomes more critical than ever. Cable trays are a foundational part of

The FOA Reference For Fiber Optics

The Installation After the process of designing fiber optic networks is completed, the next step is to install it. What do we mean by the "installation process?" Assuming



Data Center Cable Tray Design Guide , PDF , Optical

This document outlines best practices and engineering standards for designing and implementing structured cable and fiber tray systems in modern data centers. It



Fiber Cable Tray System

Installation and maintenance of cable tray wiring systems should be performed by a minimum of two qualified technicians. For the purposes of this guideline, a qualified technician is one who is familiar



Fiber Patch Panels: A Beginner's Guide , RLH

A technical guide on choosing the best Fiber Patch Panel to install & terminate fiber optic cable for any indoor/outdoor industrial communication project.

Essential Guide to Fiber Optic Splice Tray Solutions

Discover essential fiber optic splice tray solutions with our comprehensive guide, designed to route and protect fiber cables while ensuring optimal performance and durability.



CMU School of Computer Science

å 10 ä ,EURå ?ä , ? 10 ä ,EURç(TM)¾ 100
ä ,EURç(TM)¾å? 100 ä ,EURå ? 1000 ä ,EURå
?å? 1000 ä ,EURâ--<ä ,EUR 101
ä ,EURç(TM)¾é>¶ä



Cable Trays and Optical Cables

Cable Trays Cable trays are frequently used for both power and communications cables in industrial applications. A cable tray allows for easy access and simplified installation, particularly in



Cable Trays and Optical Cables

The purpose of this AE Note is to outline the use of fiber optic cables in "tray rated" environments. The question arises as to what listing is required for an optical fiber cable installed in a



The Complete Guide to Fiber Optic Cable Management

Ultimate fiber optic cable management guide: Best practices for installation, organization & maintenance - ensure network reliability.

50KW modular power converter



- Flexible Configuration**
 - Modular Design, Expanding as Required
 - Small/light, Wall Mounted
 - Installed in Parallel for Expansion
- Powerful Function**
 - Support PV/ESS
 - Grid Support, Equipped with SVG Technology
 - On-Grid and Off-Grid Operation
- Reliable Protection**
 - Custom IP65 Design
 - Safety Protection Functions Equipped

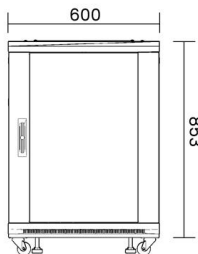


Fiber Optic Cable Tray Solutions

Fiber optic cable channel solutions are essential infrastructure components that swiftly respond to the growing and evolving communication needs of today.

Ladder Cable Tray In Fiji

We, one of the well-known Ladder Cable Trays Suppliers and Exporters from Fiji, offer a comprehensive range of cable trays manufactured using high-quality materials to ensure strength, durability, and



Energy-saving Weather-Resistant Cable Tray: An Innovative Solution

Energy-saving weather-resistant cable trays are designed to efficiently support and protect electrical cables in outdoor and demanding environments, such as industrial settings and outdoor installations.

Optical Cable Tray , Fiber Guide , Ducting , Raceway

Easy to design and simple to install, this fiber solution requires no special tools to deploy and features myriad fittings, support structures, drop options, bends and



Datec Fiji

We offer a complete end to end solution in construction and maintenance of all types of Fibre Services with a commitment to quality and value to our customer's

LEGRAND FIBER RACEWAY

With the strong growing demand of fibers, fiber cords need to be segregated from copper services and routed in an enclosed duct raceway system, fulfilling following demands:



Optical Cable Tray , Fiber Guide , Ducting , Raceway

Ducting/Raceway system is ideal for routing and supporting cables throughout fiber networks. Fiber Guide is designed to protect and route fiber optic patch cords,





MR 109/2020

Energy Fiji Limited invites sealed tenders from reputable contractors to carry out pit installation, pulling and laying of underground Fiber Optic Cable between Waqadra Substation and Denarau Substation.



7 Types of Cable Trays: How to Choose the Right One

Cable tray systems are engineered support structures designed to route, support, and protect insulated electrical cables used for power distribution,

ECO-FiWi: An Energy Conservation Scheme for Integrated Fiber-Wireless

Integrated fiber-wireless (FiWi) access networks aim at taking full advantage of the reliability and high capacity of the optical backhaul along with the flexibility, ubiquity, and cost savings



Grid Cable Trays and Fiber Optic Raceways

Need to manage cables? We explain grid cable trays and fiber optic raceways, their uses, benefits, and how they work together for better cable



What are Cable Trays & Different Types of Cable Trays

Learn what cable trays are & explore the various types, benefits, and purposes. Gain insights into how electrical cable trays can revolutionize your



A Review of Recent Energy-Efficient Mechanisms for Fiber

Fiber-wireless (FiWi) access network is a category of networks which utilize optical network's bandwidth and wireless network's flexibility. This last mile technology will



Fiber Cable Trays

Our Fiber Cable Tray System designed to route and protect fiber optic and high-performance copper cabling to or from network cabinets, distribution frames or other devices. It includes channels,





Fiber Optic Cable Tray

And with tool-free assembly of all channel sections and transitional fittings, the Fiber Cable Tray System reduces installation and maintenance time, which in turn

Contact Us

For datasheets, pricing, or custom telecom energy solutions, please visit:
<https://koskolong.co.za>