



**Adam Tas Corridor Energy**

# **Equipment Installation Requirements on Communication Towers**





## Overview

---

Construction: Hire a contractor to build the tower and other infrastructure, ensuring that all safety regulations and quality standards are met. Equipment installation: Install the telecom equipment, such as antennas, transmission lines, and power supply systems, on the tower. In addition, the Act's General Duty Clause, Section 5(a) (1), requires employers to provide their employees with a workplace free. Tower owners must comply with a multi-layered regulatory, engineering, and safety framework that governs tower siting, where a cell tower can be built, how it must be designed, and how it operates throughout its lifecycle. High quality imaging with 4/6 MP resolution Excellent low-light performance Efficient H. Introduction to TIA/EIA-222 The Structural Standards for Steel Antenna Towers and Antenna Supporting Structures, TIA/EIA-222, Edition G, as published by.



## Equipment Installation Requirements on Communication Towers

---



### **A Guide to Understanding Telecom Tower Safety Standards**

An expert guide to telecom tower safety standards. Explore the critical rules for structural design, construction, maintenance, and RF exposure to ensure network safety.

### **Telecommunications Mast Installation Guide , PDF**

This document outlines technical specifications for the installation of telecommunications masts and towers. It discusses general principles such as



### **ITU-T Rec. K.109 (11/2015) Installation of telecommunication equipment**

Summary Recommendation ITU-T K.109 provides guidelines for the installation of telecommunication equipment and/or antennas on utility poles. These guidelines cover the clearances from the power

### **Antenna Tower Lighting and Marking Requirements**

The FCC has been given the authority by Congress to require the painting and/or



illumination of antenna towers when it determines that such towers may



### Telecom Tower Equipment Installation Guide

Telecom Tower Equipment Installation: A Comprehensive Guide In the modern era of Business Intelligence and Data Analytics, the telecommunications industry is undergoing transformative



### Communication Tower Safety: Preventing falls and other

Some common communication tower hazards include falls from great heights, electrical hazards, dangers associated with hoisting personnel and equipment



1075KW HH ESS

### What Are the Requirements for a Telecom Tower?

Learn the key requirements for a telecom tower, including zoning regulations, safety approvals, structural standards, and compliance needed for tower construction.





## Telecom tower Requirements\_R2

Ø All towers shall meet the TIA-222 Structural standard. Ø Monopole towers should be self-supported and be fitted with climbing rungs/ladder. Ø Sections should be made from hollow, heavy duty, thick

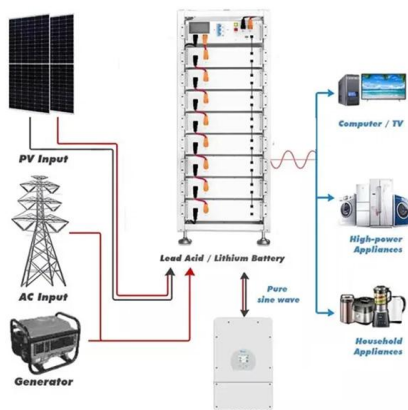


## Communication Tower Safety: Tower Site Checklist:

Communication Tower Safety: Tower Site Checklist: Additional Notes

## 1910.268

Center work includes the installation, operation, maintenance, rearrangement, and removal of communications equipment and other associated equipment in telecommunications switching centers.



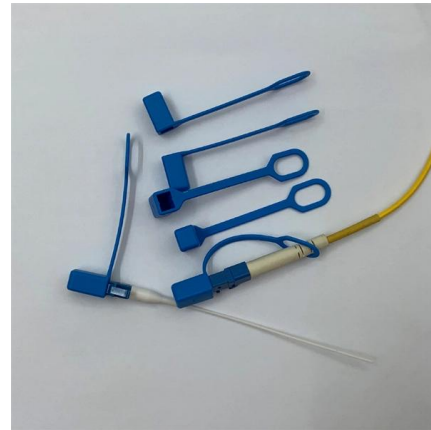
## Telecommunications Mast or Tower Guidelines

These Guidelines supersedes any other guidelines or specifications, made by the National Communications Authority, for the regulation of construction of communication towers.



## COMMUNICATION SITE BUILDING DESIGN AND INSTALLATION

COMMUNICATION SITE BUILDING DESIGN AND INSTALLATION This chapter provides requirements and recommendations for designing communications site buildings, including equipment shelters and

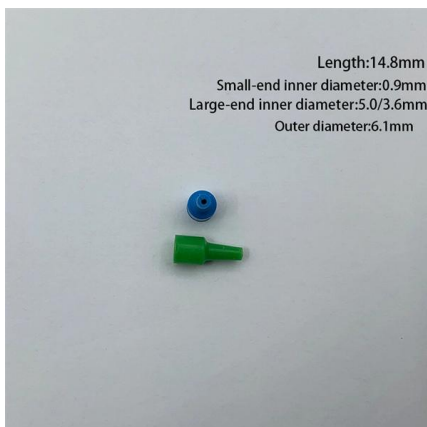


## Communication Tower Installation and Commissioning Checklist

This article is about Communication Tower Installation and Commissioning of OSP Telecom Distribution System as per International Codes and standards.

## Comprehensive Guide to Civil Construction for Telecom

4. Infrastructure Installation Beyond the tower itself, essential infrastructure components must be installed to support operational requirements:



## Working at Heights: Mast and Tower Safety for Telco

Learn critical mast and tower safety protocols for ISP & telco technicians, ensuring structural integrity, fall protection, and safe operations.



## Telecom Tower Builds, Planning, Managing, and Executing

Equipment installation: Install the telecom equipment, such as antennas, transmission lines, and power supply systems, on the tower. Testing and



## Michigan Ancillary Structure Inspection Manual (MiASIM)

Foundation - Consider the structure's foundation effect on overall stability of the communication tower structure. Vertical Structure - Consider if the vertical structure may have damage that compromises

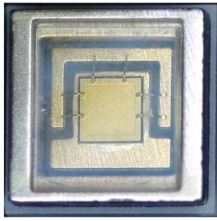
## Communications Towers , Federal Communications

Communications Towers The Enforcement Bureau's Field Offices investigate complaints regarding lighting outages, other deficient lighting and



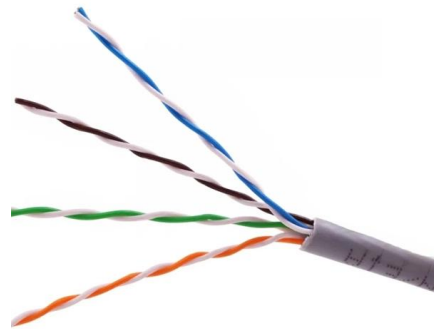
## Design Criteria and Installation of Communication Towers

This article is about Design Criteria and Installation of Communication Towers for telecommunication Engineers, supervisors and technical and reference from International Standards



## Communication Towers

Overview Prior to the 1980s, communication and broadcast tower erection, servicing and maintenance was a very small and highly specialized industry. Over the past 30 years, the growing demand for



## Final

2 Associated installations and equipment include cellular, micro wave, and other radio-based systems; satellite receivers; wire line and wireless receiving, transmitting, and switching stations, and related

## Tower Design Checklist

ANSI/TIA-222-G TOWER DESIGN CHECKLIST The following information provides an overview of some of the minimum requirements necessary to assist in the





## Recommended Best Practices for Communication Tower Design,

Co-locate communications equipment on existing communication towers or other structures (e.g., billboard, water and transmission tower, distribution pole, or building mounts).



## Communication Tower Best Practices

The business structure of the communication tower industry presents additional challenges to ensuring worker safety. When carriers own their own towers and directly employ the workers who build and



## Contact Us

---

For datasheets, pricing, or custom telecom energy solutions, please visit:  
<https://koskolong.co.za>