



**Adam Tas Corridor Energy**

# **Essential Functions of Access Layer Switches**





## Essential Functions of Access Layer Switches



### Access Switches in Networking: Key Functions , Open

Explore access switches in networking to understand their role in connectivity and traffic management within digital environments.

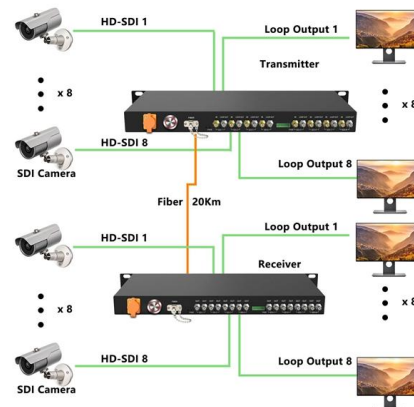


### Access Layer Functionality

NOTE Chapter 4 discusses other STP features.  
Using Multilayer Switching in the Access Layer  
The most common design for remote users is to

### Access Switches in Networking: Key Functions , Open

Access switches are vital to the smooth operation of modern business networks. They connect devices, manage traffic, and provide essential features



### What is an access switch and how to select access switches?

As key components in a network architecture, access switches are fundamental and widespread in hierarchical network design. An access switch serves as an interface for end-user



use multilayer switches or routers. A

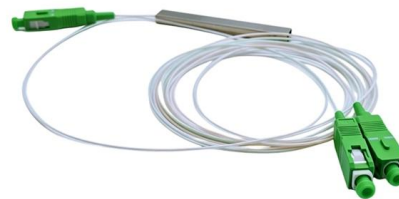


### **Choose access layer switch for the access layer network**

What is the main function of an access layer? What does an access layer switch do? How to choose the right network switch for the access layer? This post tells you

### **Access Layer - SolveForce Unified Intelligence**

The Access Layer, as the name suggests, is the layer that provides network access to end-user devices. Here's an overview of the Access Layer's key functions and components:



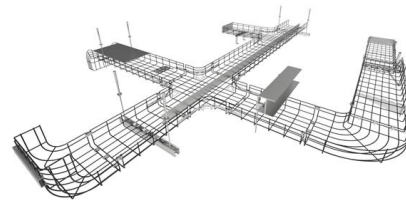
### **Access Layer**

The access layer is the last layer of three-tier architecture of a datacenter. The actual servers are connected to this layer. The access layer communicates with its upper layer using several switches



## Understanding Layer 2 Switches: A Comprehensive Guide

Conclusion Layer 2 switches are essential building blocks in modern networking, providing efficient data forwarding within LANs and supporting a range of features that enhance network



## What is an access switch and how to select access switches?

In modern network architectures, switches play a crucial role. Access switches directly connect to end users and are at the bottom layer of the network architecture. They mainly connect

## Data Center Access Layer Design

Overview of Access Layer Design Options Access layer switches are primarily deployed in Layer 2 mode in the data center. A Layer 2 access topology provides the following unique capabilities





## How to Choose the Right Access Layer Switch?

Learn 8 key factors--ports, PoE, speed, security & TCO--to choose the right access layer switch and future-proof your network. Read the guide now.

## Key Features of Access Switches Explained

Access switches serve as the first point of contact between end-user devices, such as computers, printers, IP phones, and the rest of the network. They enable

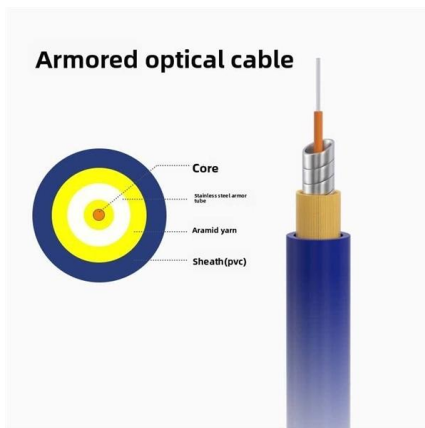


## Core, Distribution, and Access Layer Explained with

Small business implementations: Collapsed core  
Small to medium businesses don't need the same scale, but they can still benefit from the

## What Is an Access Layer Switch? Guide complet

In a typical enterprise network architecture, the access layer switch is the first point of contact between end-user devices and the rest of the network. These switches connect endpoints such as PCs,



## Access vs. Distribution vs. Core Switch Comparison Guide

Distribution Layer Switches: Positioned between the access and core layers, distribution switches aggregate traffic from multiple access switches. They are typically Layer 3 devices responsible for

## FS Access Switches Selection Guide for Your Networks

In today's interconnected world, choosing the right access switch is crucial for ensuring efficient network performance. This guide will help you



## Understanding Access Switches: Key Components of Your Network

Explore the role of access switches in your LAN setup. Understand their key components, functions in the access layer, and how they integrate into your network.





## Access Layer Security Design

Access Layer Security Design One of the most vulnerable points of the network is the access edge. The access layer is where end users connect to the network. In the past, network administrators have



## How to Choose the Right Access Layer Switch?

Pick an access layer switch that (1) offers enough ports for every wired and PoE device you'll add over the next three years, (2) delivers the

## Choose access layer switch for the access layer network

What is the main function of an access layer? What does an access layer switch do? How to choose the right network switch for the access layer? This post tells you everything.



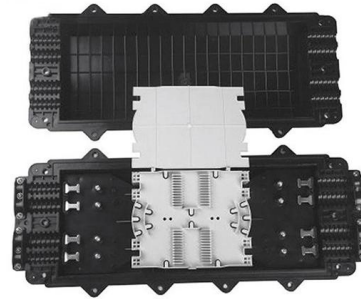
## Understanding Layer 3 Switches: A Comprehensive Guide

Layer 3 switches are advanced networking devices that combine the functions of both traditional switches and routers, offering enhanced capabilities for managing and directing data traffic



## Access, Distribution, and Core Layers Explained

This tutorial provides an overview of the access, distribution, and core layers and explains two-tier and three-tier campus LAN designs.

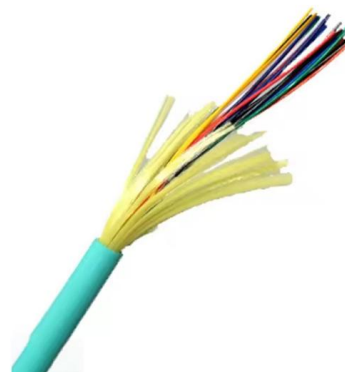


## Choose access layer switch for the access layer network

What is the main function of an access layer? What does an access layer switch do? How to choose the right network switch for the access layer?

## Choose access layer switch for the access layer network

When choosing access layer switches, there are many points to consider, such as port density, port speed, security, scalability, deployment and





## What Is an Access Switch? The Definitive Edge Network Guide

Learn what an access switch is, how it works at the network edge, why PoE and port density matter, and how Wi-Fi 7 and IoT change access-layer requirements.



## Enterprise Switches: Everything You Should Know

Figure 1: Three-tier enterprise network model  
Each layer has distinct features and functions, which influence the specific characteristics of the devices



## Core Switch vs. Distribution Switch vs. Access Switch

The access layer consists of layer 3 switches, which take routed and switched data packets from the distribution switches and then route them to the access devices



## Layer Access Networking Essentials: Best Practices and

Components at the access layer typically include switches, access points, and security devices. Switches route data packets to their destinations within a



## Contact Us

---

For datasheets, pricing, or custom telecom energy solutions, please visit:  
<https://koskolong.co.za>