



**Adam Tas Corridor Energy**

# **Explosion-proof distribution box and explosion-proof connector**





## Explosion-proof distribution box and explosion-proof connector

---

### Explosion Proof Distribution Boxes

Explosion proof distribution box components for use in hazardous areas - Zone 1 and 2; Zone 21 and 22.



### Explosion proof Power Distribution Panel Box

Power Distribution panel box - Hazardous locations for explosive gas mixtures: Zone 1 and Zone 2. Explosive gas mixtures: Class IIA, IIB, and IIC.



### Explosion-Proof Distribution Boxes & Panels Manufacturer

The explosion-proof distribution box safely delivers power in hazardous zones (oil, gas, chemical plants) with rugged, spark-resistant casing--ATEX/IECEX, IP66 certified for reliable operation in explosive



### Explosion Proof Power Distribution Boxes

Flameproof and explosion proof, these power overhaul distribution boxes are suitable for use



in hazardous areas. Specs: Ex mark: Ex de IIC T4  
Gb DIP A21 TA,T4



### **6WAY EXPLOSION PROOF DISTRIBUTION BOXES,**

BESIDES THE PRESENT DESIGNATION FOR THE  
FULL PLASTIC EXPLOSION-PROOF MOBILE POWER  
BRANCH CONNECTION SOCKET BOX, IT ALSO



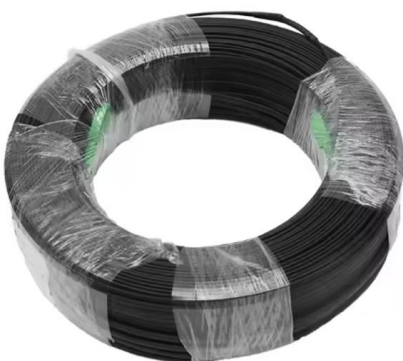
### **Explosion protective components & systems , Products , ABB**

From its global facilities ABB manufactures a  
wide range of ATEX, IECEX, UL, CSA approved  
electrical products for hazardous area  
applications. These include cable glands and  
lighting ranges.



### **Terminal Box/Explosion proof electrical equipment/global certification**

Terminal Box KHJ offers a large selection of  
terminal boxes and junction boxes for wiring  
connection in explosion hazardous areas. They  
are certified according to the latest ATEX and IEC  
EX standards.





## Explosion Proof Enclosures

Ex-Proof & Flameproof Junction Boxes & Enclosures Supermec ATEX Junction Box & Enclosures are designed to satisfy most of our clients' requirements for CONTROL explosion-proof and flameproof



## Ex-Proof & Flameproof Enclosures & Junction Box , Supermec

Supermec ATEX Junction Box & Enclosures are designed to satisfy most of our clients' requirements for CONTROL explosion-proof and flameproof enclosures.

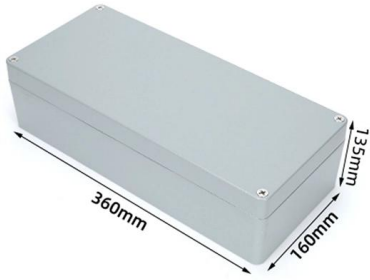
## Ex-Proof & Flameproof Enclosures & Junction Box , Supermec

Ex-Proof & Flameproof Junction Boxes & Enclosures Supermec ATEX Junction Box & Enclosures are designed to satisfy most of our clients' requirements for CONTROL explosion-proof and flameproof



## Explosion-Proof Distribution Box , Product Center

Explosion-proof distribution boxes are designed to safely control and distribute electrical power in hazardous environments, preventing ignition risks.



### **BM (D)X-Series Explosion Protected Distribution Box**

BM (D)X-Series Explosion Protected Distribution Box Explosion protection -IECEX (IEC) -ATEX (CENELEC,EN) -China Ex (GB) Application in hazardous area



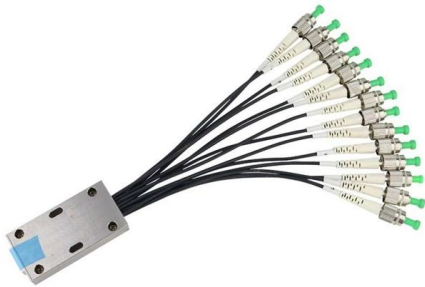
### **Terminal Box/Explosion proof electrical equipment/global certification**

KHJ offers a large selection of terminal boxes and junction boxes for wiring connection in explosion hazardous areas. They are certified according to the latest ATEX and IEC EX standards. Types of

### **Terminal and Junction Boxes , Explosion Protection**

Terminal and Junction Boxes Terminal boxes and junction boxes from Pepperl+Fuchs are designed to protect signal and power distribution networks in explosion-hazardous and challenging environments.





## Explosion proof Distribution Boxes HLDP03-M Malaysia

Explosion proof Distribution Boxes HLDP03-M Malaysia Zone 1 and Zone 2 Zone 21 and Zone 22 Meet the necessities in the following industries, such as petroleum,

## Ex Isolation Switch/Safety Switch/Circuit Breaker Manufacturers

CZ Electric Co., Ltd is an Explosion-proof isolation switch manufacturers and Explosion-proof safety switch, Explosion-proof circuit breaker (MCB) box factory.

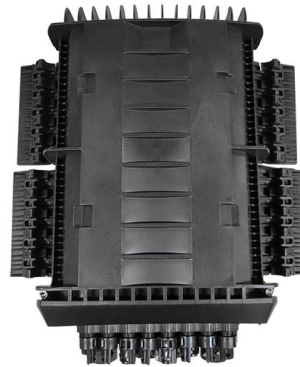


## Ex-Junction boxes and terminal enclosures ATEX

Stainless steel Ex terminal boxes - HARDO  
Stainless steel Ex terminal boxes of the Polish company HARDO, are available at a competitive price and workmanship

## Distribution Boxes

Distribution Boxes BXM (D)8061 Explosion proof  
Distribution Boxes Lighting or Power (Ex db ec  
IIC)



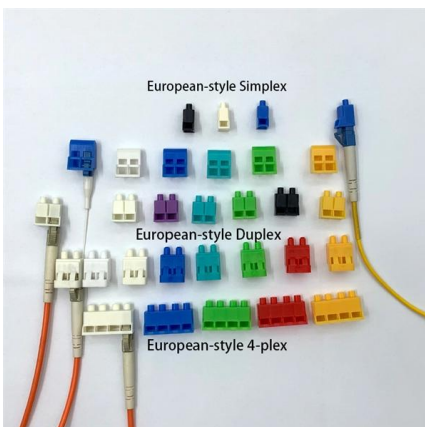
### Ex Junction Boxes and Atex Enclosures · Atex Delvalle

Our explosion protection Ex enclosures and equipment are comprehensive and widely configurable. Reliable in use and convenient to install, their overall quality



### Atex Certified Junction Boxes, Terminals, Sockets

These explosion proof junction boxes / terminal boxes, plugs, sockets & connectors are for use in explosive atmospheres in compliance with the ATEX 94/9/EC



### Top 3 Facts About Explosion Proof Distribution Box & Electrical

Explosion proof distribution boxes and electrical enclosures are critical components for ensuring safety in hazardous environments. They are designed to contain internal explosions and



## Explosion Proof Enclosures , Complete Hazardous Area

Learn everything about explosion proof enclosures for hazardous areas--design, certification, and industrial applications with ATEX, IECEx, and Class I Div

### Wall Mount Cabinet Server Racks



## GRP Ex Terminal Boxes

HTB1P terminal boxes, made of glass fibre reinforced polyester (GRP), are designed for use in explosive atmospheres: Zones 1, 2 (gases) and 21, 22 (dusts). They



## Terminal boxes , Junction boxes , Ex , Ex e , Ex d , ATEX , Explosion

Safely conduct, connect and distribute energy in hazardous areas with R. STAHL's terminal boxes. We offer bespoke, custom-made terminal boxes and terminal box combinations, as well as standard



## Explosion Proof Junction Box Types, Prices

Explosion-Proof Junction Boxes: Pricing, Sizes & Installation Guide In hazardous locations where flammable gases, vapors, or dust are present,



## Custom CZ1290 Explosion-proof distribution boxes

About CZ CZ Electric Co., Ltd was established in 1990, is a CZ1290 Explosion-proof distribution boxes ( mobile power branch connection socket box ) suppliers, and



## Contact Us

---

For datasheets, pricing, or custom telecom energy solutions, please visit:  
<https://koskolong.co.za>