



**Adam Tas Corridor Energy**

# **Explosion-proof distribution box on site**





## Explosion-proof distribution box on site

---



### Explosion-Proof Distribution Box

The distribution box (explosion-proof) is an aluminum alloy housing, electrostatic spraying, in accordance with the explosion-proof provisions of GB3836.2-2000, for the distribution of electric

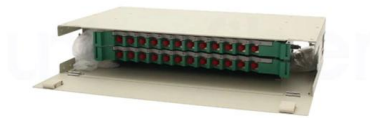
### Explosion-Proof Electrical Box: Principles, Selection, and Industrial

For customized design, selection guidance, or sample testing support of explosion-proof electrical boxes tailored to your specific environment, please contact our engineering team for



### 5 Key Factors to Consider When Selecting Explosion Proof

Consider certifications, enclosure ratings, electrical needs, materials, and maintenance when selecting explosion-proof distribution boxes.



### Distribution Boxes

Distribution Boxes BXM (D)8061 Explosion proof  
Distribution Boxes Lighting or Power (Ex db ec IIC)



### Distribution box solutions for explosion-proof environments in

Explosion-proof distribution boxes represent where regulatory wisdom meets engineering excellence. What appears as simple protective enclosures are actually sophisticated safety systems honed



### Expert Guide: Selecting Temporary Power Distribution Boxes

Industrial sites demand electrical systems that perform under pressure. Temporary power distribution boxes handle that role, routing electricity where it needs to go while keeping



### DISTRIBUTION BOARDS

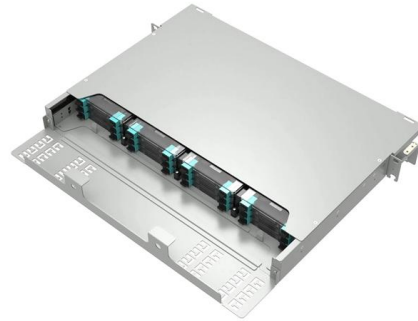
These are available in a range of materials including Stainless Steel, GRP & Sheet Steel from IP42 (Indoor) to IP 66 (Outdoor) Applications.





## How to Wire an Explosion-Proof Distribution Box and

Explosion-proof electrical equipment, such as explosion-proof distribution boxes, is specifically designed for hazardous environments where flammable gases,



## Top 3 Facts About Explosion Proof Distribution Box & Electrical

Learn the top 3 facts about explosion proof distribution boxes & electrical enclosures--certifications (ATEX, IECEx, NEMA), durable materials, and customization for

## Ex-Proof & Flameproof Enclosures & Junction Box , Supermec

Supermec ATEX Junction Box & Enclosures are designed to satisfy most of our clients' requirements for CONTROL explosion-proof and flameproof enclosures.



## Explosion Proof Power Distribution Boxes

Flameproof and explosion proof, these power overhaul distribution boxes are suitable for use in hazardous areas. Specs: Ex mark: Ex de IIC T4 Gb DIP A21 TA,T4



### Installation and Wiring of High and Low Voltage Explosion-Proof

Installation of High and Low Voltage Explosion-Proof Distribution Boxes: Before installation, the control room should be ready, with all interior work completed, and the environment



### Precautions for installation of explosion proof power distribution box

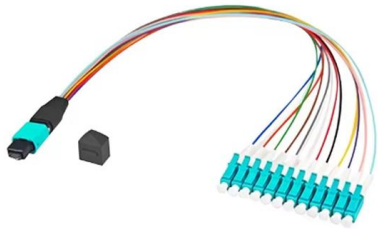
3. Explosion proof distribution box and switch box shall be installed in ventilated, dry and normal temperature places. It is strictly forbidden to install it in the gas, smoke, steam, liquid and



### Expert Guide: Select the Right Temporary Power Distribution Box

The right distribution box that matches your power requirements, durability needs, and weather resistance will give optimal performance for specific applications. Note that successful power



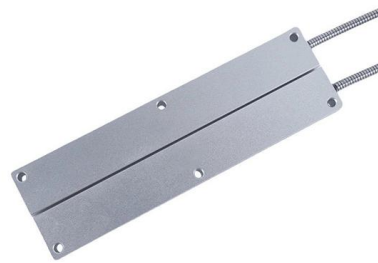


## Explosion Proof Power Distribution Boxes CE92

Flameproof and explosion proof, these power overhaul distribution boxes are suitable for use in hazardous areas. Specs: Ex mark: Ex de IIC T4 Gb DIP A21 TA, T4

## Ex Local Control Stations & Distribution Boxes

Atex control stations, explosion protected control units and distribution boxes made stainless steel maritime grade AISI 316L or AISI 304L. Atex Delvalle provides a

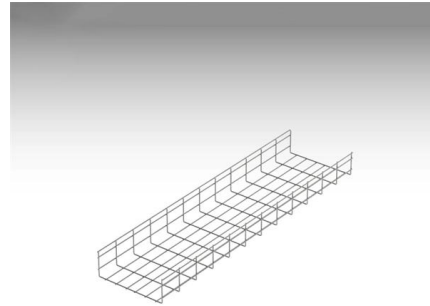


## Explosion proof Power Distribution Panel Box

Power Distribution panel box - Hazardous locations for explosive gas mixtures: Zone 1 and Zone 2. Explosive gas mixtures: Class IIA, IIB, and IIC.

## Explosion-Proof Distribution Boxes: Special Installation Requirements

Unlike standard distribution boxes that could become shrapnel shards in volatile environments, explosion-proof containers are engineered fortresses that absorb, contain, and vent catastrophic



Grid Cable for  
marine and offshore  
applications



### **Explosion-proof distribution box: the "invisible guard" protecting**

Ordinary distribution boxes may become a safety hazard in high temperature, corrosive or flammable environments. The explosion-proof distribution box uses explosion-proof, anti

### **Explosion Proof Distribution Box , ATEX Transformer Supplier**

We supply certified explosion proof distribution box & ATEX Transformer -Appleton, ATKON, CZ, CEAG, brands for safe and reliable industrial use.



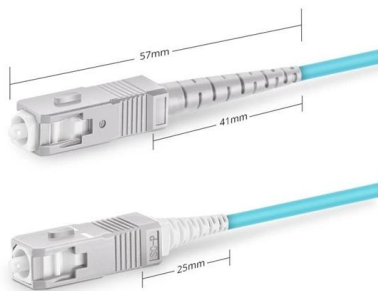
### **Explosion proof distribution box standards and installation issues**

Explosion-proof distribution boxes are mainly used in coal mines, fire stations, petroleum, petrochemical installations and textile and other flammable and explosive places.



## Explosion-Proof Distribution Box , Product Center

Explosion-proof distribution boxes are designed to safely control and distribute electrical power in hazardous environments, preventing ignition risks.



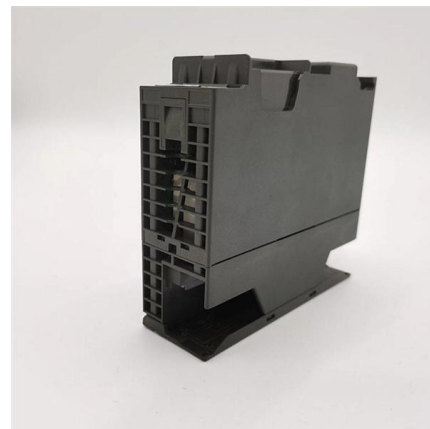
Simplex SC UPC

## Explosion-Proof Distribution Boxes & Panels Manufacturer

The explosion-proof distribution box safely delivers power in hazardous zones (oil, gas, chemical plants) with rugged, spark-resistant casing--ATEX/IECEX, IP66 certified for reliable operation in explosive

## Explosion Proof Distribution Boxes Manufacturer & Supplier

Warom Explosion Proof Distribution Boxes Manufacturer & Supplier offers secure, high-performance solutions for industrial automation and electrical control systems.



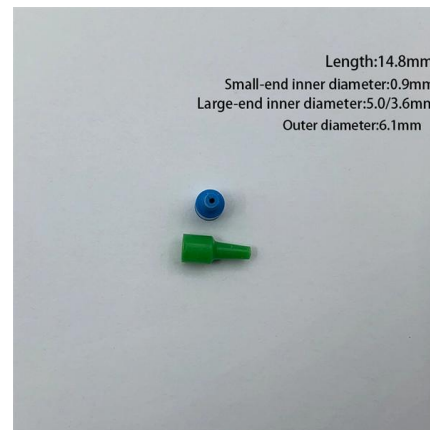
## Explosion Proof Distribution Boxes

Explosion proof distribution box components for use in hazardous areas - Zone 1 and 2; Zone 21 and 22.



## Explosion proof distribution box standards and installation issues

Explosion-proof distribution boxes are mainly used in coal mines, fire stations, petroleum, petrochemical installations and textile and other flammable and explosive places. These places are more prone to



## Contact Us

---

For datasheets, pricing, or custom telecom energy solutions, please visit:  
<https://koskolong.co.za>