



Adam Tas Corridor Energy

Explosion-proof light connection to distribution box





Explosion-proof light connection to distribution box

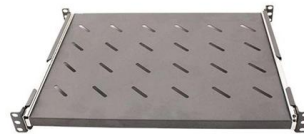


Explosion Proof Box & Cabinet

Product features: The explosion-proof control cabinet (box) can install various instruments inside. Low-voltage electrical appliances, frequency converters, PLCs, soft starters, and computer systems can

Precautions for installation of explosion proof power distribution box

1. The wire inlet and outlet of explosion-proof distribution box should be set at the bottom of the box, not at the top, side, back or door of the box; The incoming line and outgoing line shall be



Explosion-Proof Distribution Boxes: Special Installation Requirements

Explosion-proof boxes aren't metal containers - they're integrated life-preservation systems requiring holistic design, precision installation, and continuous vigilance.

Explosion-Proof Lights, Explosion-Proof Junction Box,

Shenhai: With 25 years of expertise, we lead in manufacturing high-quality explosion-proof lights, junction boxes, and pipe fittings for



hazardous environments.



Special requirements for cable laying and distribution box installation

Working in potentially explosive environments means every component of your electrical system becomes a potential spark that could ignite disaster. It's not just about compliance - it's about



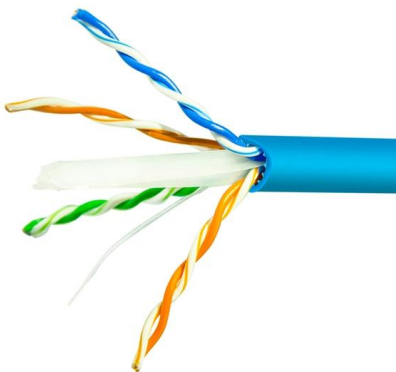
Ex-Proof & Flameproof Enclosures & Junction Box , Supermec

Supermec ATEX-approved Junction Box & Explosion Proof, Flameproof Enclosures are designed to satisfy your requirements. Manufactured using the latest technologies.



Installation and Wiring of High and Low Voltage Explosion-Proof

Use rubber plates to connect the tray to the explosion-proof distribution box, protecting wires and cables. See the diagram for the connection between the tray and the box.





Installation guide for hazardous areas

All circuit wiring is run in conduit and junction boxes approved for explosion-proof installation. Explosion proof transducers and wiring must be installed according to ANSI/UL 1203-1994, Explosion-Proof



Explosion Proof Distribution Box & Electrical Enclosures

Durable Hexlon Explosion Proof Distribution Boxes and Electrical Enclosures, IECEx and ATEX certified for Zone 1 and Zone 2.



Warom Explosion Proof Equipment , ATEX IECEx

Warom specializes in manufacturing explosion-proof electrical equipment, with products covering explosion-proof lighting fixtures, explosion-proof distribution



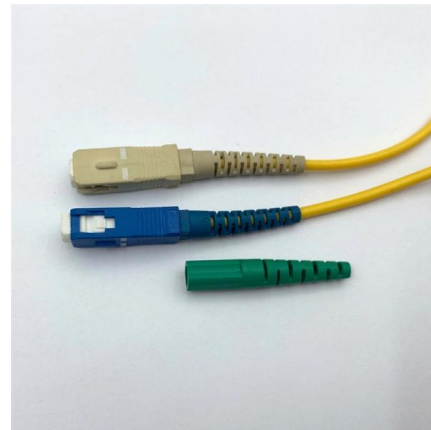
What are the principles of connecting explosion proof distribution

Connection: Explosion-proof distribution box and galvanized pipe should be connected with threaded connection and use explosion-proof junction box and explosion-proof switch. The steel pipe needs to



What are the principles of connecting explosion proof distribution

1 The requirements for laying explosion-proof pipes are higher than those for laying ordinary open pipes. Need to use thick-walled pipe (galvanized water pipe), each connection also has special



How To Wire Explosion-Proof Lights , Installation Method

Explosion-Proof Flexible Conduit Wiring: When connecting junction boxes to lighting fixtures, use explosion-proof flexible conduits. Cables should be

Flameproof Whether proof Lightning Junction Box

Manufacturer of Flameproof Whether proof Lightning Junction Box - Flameproof Lightning Distribution Board, 4 Way Flameproof Lightning Distribution Board, 6





Explosion Proof Enclosure Comprehensive Guide

Explosion-Proof Distribution box: These smaller components are structurally similar to distribution cabinets. You can use these for the distribution

Explosion proof Lighting Power Distribution Box

Explosion proof Lighting Power Distribution Box, products shock-resistant and durable, energy-saving and environmentally friendly, models and styles are



How to Wire an Explosion-Proof Distribution Box and

When installing and wiring an explosion-proof distribution box, it is essential to follow strict safety protocols and national electrical standards (e.g., IEC, NEC, or local

Explosion-Proof Electrical Distribution Boxes: Applications in

Explosion-proof electrical distribution boxes are essential for safety in hazardous environments. These specialized enclosures are built to contain internal explosions and stop the ignition of flammable



Explosion-Proof Distribution Boxes: Special Installation Requirements

Unlike standard distribution boxes that could become shrapnel shards in volatile environments, explosion-proof containers are engineered fortresses that absorb, contain, and vent catastrophic



Energy Distribution

BARTEC offers one of the most extensive ranges of explosion-proof and substance-resistant components, devices, and systems for controlling, switching, and



Explosion-Proof Junction Box for Hazardous Areas

Explore the features, working principles, and benefits of an Explosion-Proof Junction Box -- essential for safe electrical connections in hazardous





BM (D)X-Series Explosion Protected Distribution Box

BM (D)X-Series Explosion Protected Distribution Box Explosion protection -IECEX (IEC) -ATEX (CENELEC,EN) -China Ex (GB) Application in hazardous area



Explosion proof Power Distribution Panel Box

Power Distribution panel box - Hazardous locations for explosive gas mixtures: Zone 1 and Zone 2. Explosive gas mixtures: Class IIA, IIB, and IIC.

Explosion protective components & systems , Products , ABB

From its global facilities ABB manufactures a wide range of ATEX, IECEX, UL, CSA approved electrical products for hazardous area applications. These include cable glands and lighting ranges.



LED Explosion Proof Lighting for Hazardous Locations

LED Lighting Supply's explosion proof lighting delivers 60-75% energy savings with UL844-certified safety for hazardous locations including Class I/II Division 1& 2.



Contact Us

For datasheets, pricing, or custom telecom energy solutions, please visit:
<https://koskolong.co.za>