



**Adam Tas Corridor Energy**

# **Explosion-proof quick-connect box for level three electrical distribution box**





## Explosion-proof quick-connect box for level three electrical distribu

---

### Model and Specification of Explosion-Proof Distribution Box



Explosion-proof lighting distribution boxes and cabinets come in a variety of models. They vary in terms of materials, including metal and flame-retardant plastic; installation methods, such as

### Atex Certified Junction Boxes, Terminals, Sockets & Connectors

These explosion proof junction boxes / terminal boxes, plugs, sockets & connectors are for use in explosive atmospheres in compliance with the ATEX 94/9/EC Directive and IEC.



### Explosion Proof Junction Box Types, Prices

Explosion-Proof Junction Boxes: Pricing, Sizes & Installation Guide In hazardous locations where flammable gases, vapors, or dust are present,

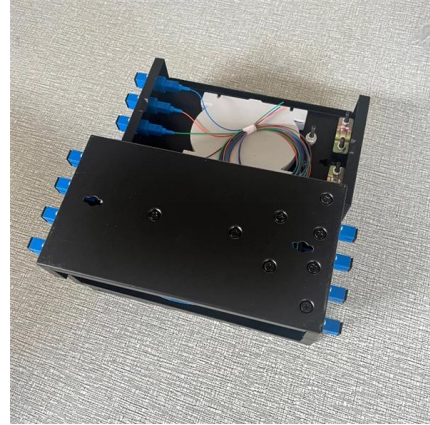


### Explosion Proof Electrical Fittings , Explosion Proof

Douglas Electrical Manufactures Explosion Proof Electrical Fittings, Explosion Proof Conduit Seal,



and Explosion Proof Wire Seal for Hazardous Locations. Our



### Explosion-proof Distribution Box

China Explosion-proof Distribution Box catalog of Exd Explosion Prevention Exe Aluminum Alloy Junction Box Explosion-Proof Threading Straight Box Ex Seal Wire Box, Explosion-Proof Type a

### Explosion Proof Junction Box, IP65, Increased Safety,

Explosion-proof junction box features a housing made of aluminum alloy die-casting or welded steel plate, with a high-pressure electrostatic spray finish. Inside, the



### Energy Distribution

BARTEC offers one of the most extensive ranges of explosion-proof and substance-resistant components, devices, and systems for controlling, switching, and



## Explosion Proof Plug and Socket, Junction Box Price,

We provide Explosion proof various equipment's like plug and socket, junction box, cable glands and control panel assembly in UAE as per ATEX standard &



## Terminal Box/Explosion proof electrical equipment/global certification

KHJ offers a large selection of terminal boxes and junction boxes for wiring connection in explosion hazardous areas. They are certified according to the latest ATEX and IEC EX standards.

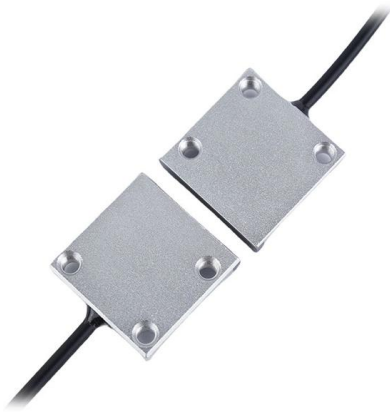
## Reuters , Breaking International News & Views

Find latest news from every corner of the globe at Reuters , your online source for breaking international news coverage.



## Explosion-Proof Distribution Boxes & Panels Manufacturer

The explosion-proof distribution box safely delivers power in hazardous zones (oil, gas, chemical plants) with rugged, spark-resistant casing--ATEX/IECEX, IP66 certified for reliable operation in explosive



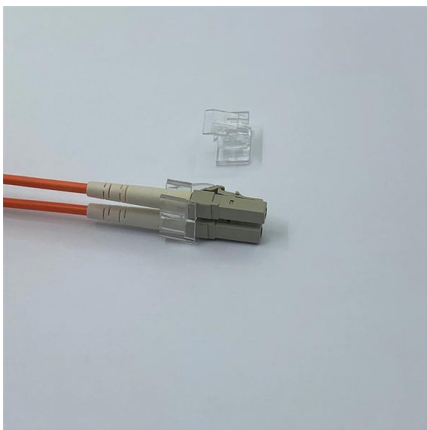
## Principles for Connecting Explosion-Proof Distribution

Explosion-proof systems, especially in hazardous environments, demand a meticulous approach to ensure safety and compliance with regulations. This



## Explosion-Proof Junction Box for Power Cables

Explore our Junction Box for Power Cables Connection, designed for electrical heating systems in explosion hazard areas. Featuring IP66 rating, easy



## 9KVA Explosion Proof Portable Power Distribution

9KVA Explosion Proof Portable Power Distribution  
- C1D1 - 480V to 208Y/120V 3-phase - (9) EXP Receptacles



### **6WAY EXPLOSION PROOF DISTRIBUTION BOXES,**

BESIDES THE PRESENT DESIGNATION FOR THE FULL PLASTIC EXPLOSION-PROOF MOBILE POWER BRANCH CONNECTION SOCKET BOX, IT ALSO



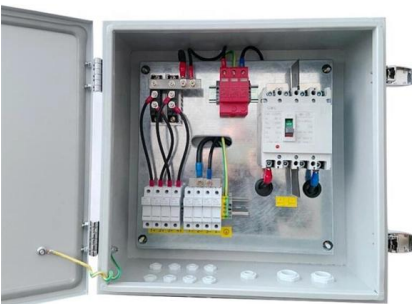
### **Explosion-proof junction box, Explosion-proof terminal**

The T12 junction box series is a terminal box series for connection in areas with increased safety. The housing consists of shock-resistant glass-fibre reinforced



### **Ex junction and terminal boxes - Explosion-Proof , mlx-ex**

GRP Ex terminal boxes What are Ex Terminal Boxes? Ex terminal boxes are protective enclosures used to connect and distribute electrical circuits safely within explosive atmospheres. They serve as





## Explosion Proof Receptacle & Socket, ATEX Explosion

Additionally, ATEX sockets and explosion proof receptacle boxes can be installed in enclosed explosion proof enclosures or panels for convenient plug-in connections



## Ex junction and terminal boxes - Explosion-Proof , mlx-ex

These boxes are engineered to contain any potential spark or heat that could be generated by electrical connections, ensuring it cannot ignite the surrounding environment.

## Hazardous Location , Killark

Killark's explosion proof, dust-ignition proof fused and non-fused disconnect switches are suitable for use in the most harsh and hazardous areas. With the ability to provide QUAD labeling for UL, CSA,



## Terminal boxes , Junction boxes , Ex , Ex e , Ex d , ATEX , Explosion

Terminal boxes for safe installation in hazardous areas Safely conduct, connect and distribute energy in hazardous areas with R. STAHL's terminal boxes. We offer bespoke, custom-made terminal boxes



### **Amazon : Explosion Proof Junction Box**

Explosion Proof Junction Box, Die-Casting Aluminum Ex-Proof Wiring Electrical Box Enclosure, 3/4" NPT\*5, Waterproof IP66 Conduit Box, UL Certified for C1D1& 2 and C2D1



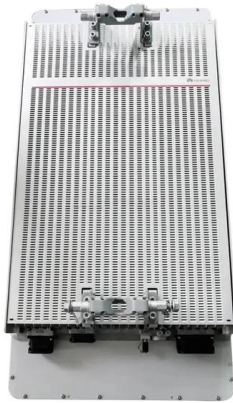
### **Ex Local Control Stations & Distribution Boxes · Atex**

Atex control stations, explosion protected control units and distribution boxes made stainless steel maritime grade AISI 316L or AISI 304L. Atex Delvalle provides a

### **Terminal and Junction Boxes , Explosion Protection**

Terminal and Junction Boxes Terminal boxes and junction boxes from Pepperl+Fuchs are designed to protect signal and power distribution networks in explosion-hazardous and challenging environments.





## Explosion-Proof Electrical Distribution Boxes: Applications in

Find out how explosion-proof electrical boxes keep people and equipment safe in risky environments like oil, gas, and chemical industries !

## Installation and Wiring of High and Low Voltage Explosion-Proof

Generally, professional electricians should handle the wiring of explosion-proof distribution boxes, as they possess the necessary skills and safety equipment. In non-urgent cases,



## Contact Us

---

For datasheets, pricing, or custom telecom energy solutions, please visit:  
<https://koskolong.co.za>