



**Adam Tas Corridor Energy**

# **Explosion-proof type for cold aisle of agent data center**





## Overview

---

Lightweight, durable, impact resistant, and thermal insulating, polycarbonate twinwall enables secure, easily scalable, and thermally regulated hot and cold aisle containment systems for data storage and processing. Where Cold Aisles are part of the room being protected, we try to include nozzles in the aisles wherever possible. Hot aisle and cold aisle containment are foundational concepts in data center design. It involves the use of physical barriers or enclosure at the end of server aisles to separate hot and cold airflows. However, without a physical barrier, you can still have wrap-around and bypass air, which can result in unacceptably high air temperature DCM cabinets with 4' or 6' aisles, and requires a uniform row.



## Explosion-proof type for cold aisle of agent data center

---



### CONTAINMENT SYSTEM

NDS's ADVANCED AISLE™ Containment System provides the most cost effective, easy to implement and site-friendly total approach to achieve this positive separation in existing (retrofit) or new data

### How to Design an Aisle Containment Solution for Your Data Center

Designing an aisle containment solution is a critical step in optimizing cooling efficiency, reducing energy consumption, and ensuring the reliability of your data center. Aisle containment



### Hot and Cold Aisle Containment in Data Centers

Hot Aisle Containment The objective of the hot aisle containment data center is to enclose hot air masses and redirect them further to cooling systems.



### Hot and Cold Aisle Containment Systems: How They

What Is Hot and Cold Aisle Containment? Hot aisle containment (HAC) and cold aisle

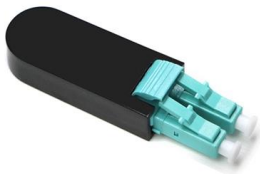


containment (CAC) are the most efficient ways of preventing



### Hot & Cold Aisle Containment Solutions , Data Center

Hot & Cold Aisle Containment increases cooling efficiency and airflow management results in todays modern data center. Learn more about Cool Shield today!



### Maximizing Data Center Efficiency: Technical Impacts of

2. What Is Hot Aisle/Cold Aisle Configuration?  
This layout organizes server racks into alternating rows: Cold Aisles: Fronts of racks face each other.



### Cold Aisle Containment

EDP Data Centre Solutions designs, manufactures, and installs bespoke Cold Aisle Containment (CAC) systems, each specifically designed to accommodate the





## Server Room Containment Systems , Hot & Cold Dial Containment in

Hot and cold aisle containment is a proven strategy to optimize airflow, reduce energy costs, and improve cooling efficiency. At Profile IT Solutions, we specialize in designing and implementing



## A DEEP DIVE INTO THE WORLD OF HOT & COLD AISLE

THE GREEN GRID: ASHRAE Data Center Cooling Guidelines: Developed in collaboration with ASHRAE, this document provides best practices for data center cooling, including hot and cold aisle

## Cold Aisle Containment

Product Description Aisle containment in the data center requires that cabinets are aligned in a hot aisle/cold aisle layout. Containment panels or strips create a



## Data Center Enclosures: Hot-Aisle and Cold-Aisle Containment Using

This is where hot-aisle and cold-aisle containment systems make the difference. Containment enclosures--built with T-slotted aluminum extrusion frames, twin-wall polycarbonate



## Aisle Containment Systems Physical Containment Systems

Door Options A choice of door options is available for use with the aisle containment system to provide the right combination of safety and security. Dual sliding doors or Vertical doors can be chosen for



## Data Center Containment Materials

Lightweight, durable, impact resistant, and thermal insulating, polycarbonate twinwall enables secure, easily scalable, and thermally regulated hot and cold aisle

## Hot Aisle vs. Cold Aisle Containment for Data Centers

Involving data centers, one of the biggest concerns faced is airflow management. Temperature and humidity need to be carefully controlled to protect



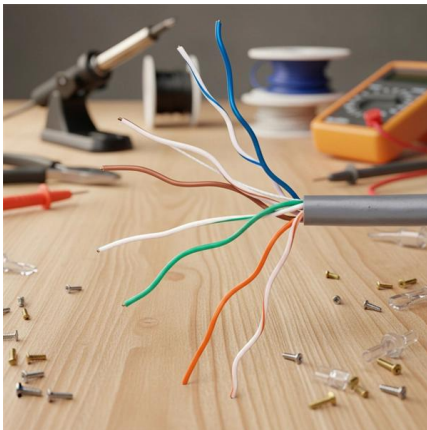


## Cold Aisle Containment in Data Centers , Subzero

Minimize your data center's footprint, establish optimal operating efficiencies and save money with cold aisle containment. Learn more here!

## How to Choose Between Hot-Aisle & Cold-Aisle Containment in a Data Center

Historically data center server racks were arranged to reduce the mixing of hot exhaust air with chilled air from cooling units. Aisle containment systems fully isolate either the hot or cold



## Approaches to Data Center Containment

The data center is fraught with power and cooling challenges. For every 50 kW of power the data center feeds to an aisle, the same facilities typically apply 100-150

## Cold Aisle Containment: The Ultimate Guide To

Additionally, cold aisle containment tends to be easier to implement compared to hot aisle containment, as it typically requires fewer modifications to the existing





## Cold Aisle Containment in Data Centers , Subzero

Cold aisle containment systems use doors at aisle ends, ceiling panels or lids above racks, and structural frames to create enclosed zones where cold supply air flows

## Hot And Cold Aisle Data Center Containment

Containment is needed in data centers and is a best practice followed by most modern data centers. For more inputs on containment and designing and



## Cold / Hot Aisle Containment

Where Cold Aisles are part of the room being protected, we try to include nozzles in the aisles wherever possible. This is because of a requirement

## Hot Cold Aisle Containment

Aisle containment ceiling panels are required when a containment system cannot be suspended from a drop ceiling or a self supported containment option is required.



### **Aisle Containment , Modular Cleanroom & Data Center Containment**

Depending on your facility's layout, Armstrong Aisle Containment Solutions offer both Hot Aisle Containment (HAC) and Cold Aisle Containment (CAC) systems to suit new builds or retrofit



### **Hot Aisle vs Cold Aisle Containment , AMCO Guide**

Learn the differences between hot aisle and cold aisle containment systems and how they affect data center cooling efficiency.



### **Cold & Hot Aisle Containment For Data Center Efficiency**

Learn how cold and hot aisle containment improves airflow, reduces energy use, and boosts reliability in data centers. Backed by CFD insights from





## Hot Aisle vs Cold Aisle Containment Explained (Data Center Cooling)

In this guide, we'll break down how hot aisle and cold aisle configurations work, what containment systems do, and why airflow management is critical in today's high-density data centers.



## Data Center Design: Hot Aisle & Cold Aisle - Length

Efficient airflow management in data centers relies heavily on proper Hot Aisle and Cold Aisle configurations. To maintain thermal performance, equipment

## Implementing Hot and Cold Air Containment in Existing Data Centers

However, most existing data centers are constrained to certain types of containment strategies. Note that this paper is for existing data centers. For information on containment for new data centers, see



## Cold Aisle Containment & Hot Aisle Containment

Executive Summary of Aisle Containment This article examines cold aisle containment and hot aisle containment (also known as cold or hot air containment) from a neutral perspective. Cross-Guard, as



## Contact Us

---

For datasheets, pricing, or custom telecom energy solutions, please visit:  
<https://koskolong.co.za>