



Adam Tas Corridor Energy

External wiring without terminals in the distribution box





External wiring without terminals in the distribution box

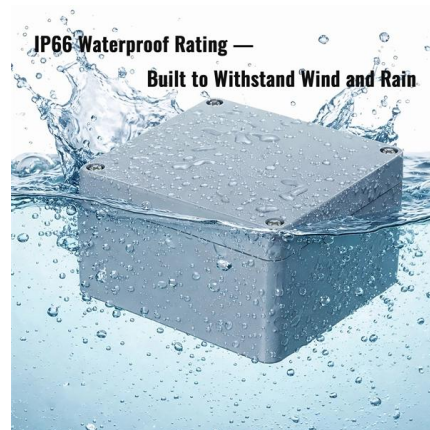


How to wire a new circuit with no main disconnect?

If this is a newer home, check around the meter for a main disconnect box and look in there. Newer code/homes are required to have an external main disconnect.

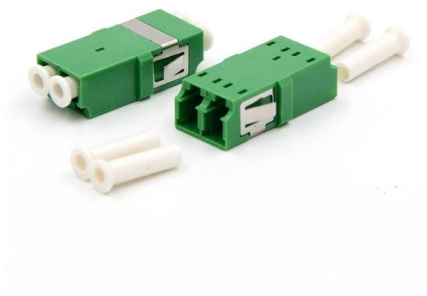
How to Run Electrical Wire Outside a Wall

Install exterior electrical wiring safely and legally. Guide covers proper materials, secure installation methods, and mandatory NEC code compliance.



External Junction Box Wiring

Junction Box Wiring Basics Essentially, a junction box houses wire connections in order to split off power from a single source to multiple outlets. Moreover, you have covered the containers properly and

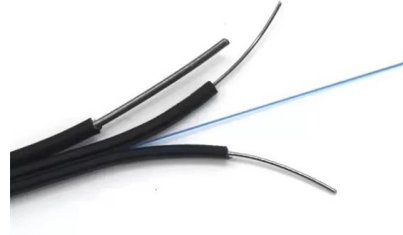


Outdoor Electrical Junction Box: Types & NEC Code Requirements 2025

Installing outdoor wiring without proper junction



boxes will fail inspection, may void your homeowner's insurance, and creates serious liability if an electrical incident occurs.

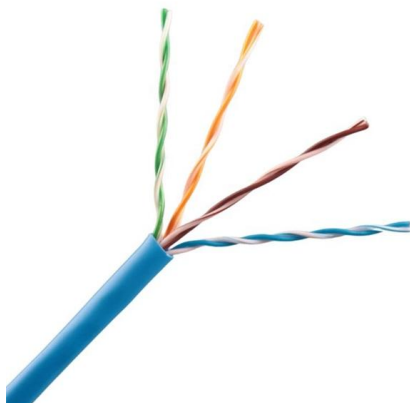


AS/NZS 3000 Switchboard Rules - Complete Guide for

The next section answers common questions under the AS/NZS 3000 Wiring Rules, including what switchboards are, when they're required, and the

The installation requirements for the distribution box

Wiring an outdoor circuit is not always difficult. Here are some methods to get power from inside your home to an outside appliance or



The installation requirements for the distribution box

Learn how to install a distribution box safely and correctly. Covers wiring, placement, standards, and expert tips for a compliant setup.



The Ultimate Guide to Terminal Junction Box Wiring:

Learn how to properly wire terminal junction boxes for electrical connections. Understand the importance of proper wiring techniques, safety precautions, and



A Step-by-Step Guide to Wiring an Electrical Panel Box

Find out how to properly wire an electrical panel box with a comprehensive diagram and step-by-step instructions.



Electric distribution box wiring tutorial (very simple and practical)

In this video, we are going to wire a power distribution box. This small box has an rccb switch that protects the outputs from electric shock and also has a miniature switch that protects the

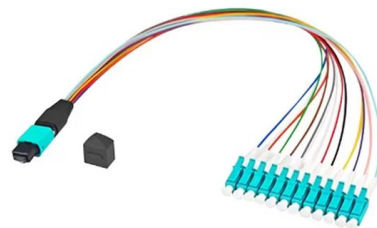
The Complete Guide to Distribution Box: Installation, Types & More

What's the difference between a distribution box and a sub-panel? A distribution box typically refers to the main electrical panel that receives power from the utility service. A sub-panel is



How to Install a Cable Distribution Box Safely and

Understanding Cable Distribution Boxes A cable distribution box is an electrical device used to collect, distribute, and protect electrical power. It is

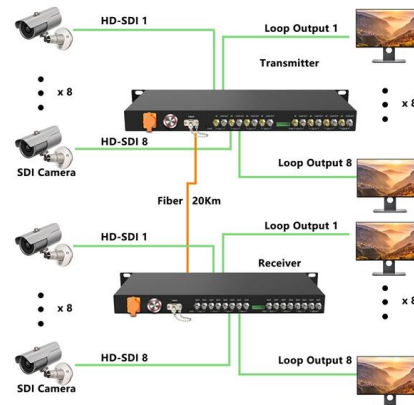


Distribution Box Wiring Steps

?Wiring and Binding? ?Wiring Direction?: Wiring between the main circuit breaker and each branch circuit breaker in the box generally goes on the left, and

Understanding Distribution Boxes: A Comprehensive Guide

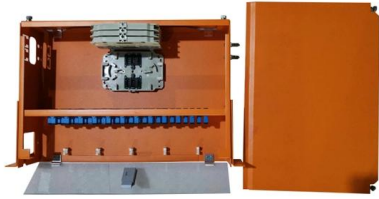
A distribution box, also known as a power distribution box or electrical distribution box, is used to distribute electrical power safely to multiple





THE ELECTRICITY WIRING REGULATIONS (2020)

[Note: Circuit identification numbers must indicate the Distribution Board from which an Accessory or fitting is supplied, and may be fixed externally or internally, i.e. either outside or inside cover plates.]



How to Wire a Home Distribution Box

The above mentioned electrical wiring accessories and protective devices are used to control and distribute electric supply (safely to connected



1926.405

For temporary wiring over 600 volts, nominal, fencing, barriers, or other effective means shall be provided to prevent access of other than authorized and qualified personnel.



Distribution Box Wiring Steps

?Wiring Direction?: Wiring between the main circuit breaker and each branch circuit breaker in the box generally goes on the left, and the wiring out of



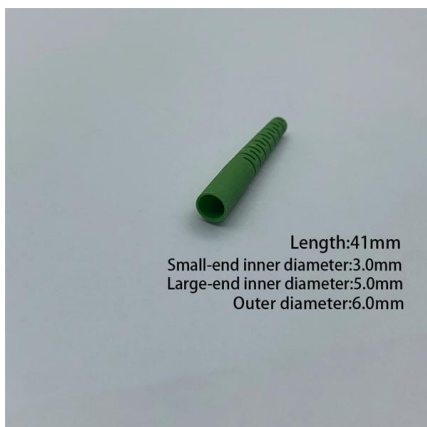
ELECTRICAL INSTALLATIONS OUTDOORS: ASUPPLYTO A

Garage is to be supplied from a spare way in the consumer unit and a small two-way distribution board is to be provided in the garage (fig 1). a cable run out to the small two-way consumer unit in the



Understanding Circuit Breaker Wiring Configurations in

Correct wiring methods for circuit breakers within distribution boxes are fundamental to ensuring electrical safety and compliance with established codes.



LV/MV power substation equipment and wiring

The series MV metal enclosed cells are designed with the purpose of use medium voltage switchgear (control) in secondary distribution systems up to



Contact Us

For datasheets, pricing, or custom telecom energy solutions, please visit:
<https://koskolong.co.za>