



Adam Tas Corridor Energy

Fabrication of Low-Voltage Intelligent Distribution Box in Fiji





Fabrication of Low-Voltage Intelligent Distribution Box in Fiji



Low Voltage Power & Data Distribution , LEONI Group

The internal power distribution is carried out either via cables, busbars or PCB technology and connects fuses, diodes and relays. The cable set can be

GRID-CONNECTED PV SYSTEMS

Extra Low Voltage Work: - All extra low voltage wiring should be performed by a 'competent' person, which is defined in various standards: "a person who has acquired through training, qualifications,



Medium And Low Voltage Panel In Fiji

We use cut-edge tools and modern machinery to manufacture premium quality Electrical Panels, LT Distribution Panels, Cable Bus Ducts, Power Generators, and Electrical Transformers in Fiji. We

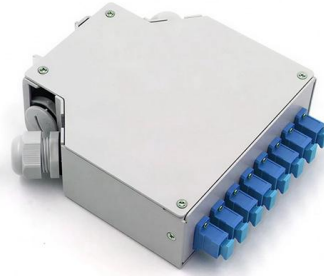


Intelligent Distribution , Solutions , ABB

Our solutions for smart low voltage electrical installations are tailored to maximize continuity



of service, energy efficiency and allow easy upgrades all along the



Lautoka Switchboard & Electrical

Our local switchboards are designed and fabricated in-house in Fiji and follow AS/NZS 3000:2018 wiring standards with EFL compliance certificates. We have also partnered with Power Assemblies NZ and



Fiji Electrical Outlets & Power Plugs ?

Find out everything you need to know about the electricity in Fiji for travellers. Find out what power plugs are used, voltage and frequency.



City Product Center_3-Guangzhou Yibian Electrical_Construction of

This innovative outdoor integrated distribution box integrates multiple functions, including power distribution, control, protection, reactive power compensation, and energy metering. Additionally, it



China China Intelligent Integrated Distribution Box

JP series integrated intelligent distribution box is a new type of outdoor integrated distribution device integrating multiple functions such as power distribution,



Analysis and Improvement of Intelligent Low-voltage Integrated Power

The experimental results show that the safe opening success rate of the intelligent low-voltage integrated distribution box is not less than 99%, which can prove that it is reliable and can be used in

Lautoka Switchboard & Electrical

With 15 years experience in the Electrical Field, Lautoka Switchboard & Electrical PTE Ltd started production in 2018. At LSEL we strived to provide quality workmanship and products in a healthy and



Low Voltage Integrated Distribution Box , Power

The low voltage integrated distribution box is a distribution device suitable for three-phase AC 50HZ, rated voltage 0.4KV power applications. It provides real-time



Low Voltage Distribution Box

Our products boast customizable materials and dimensions, ensuring a tailored experience. With a range of materials to choose from and the ability to adjust sizes to your liking, our offerings are



Switch Boards & Meter Boxes - Roofing and Profiles

We manufacture and assemble purpose built switchboards for both commercial and industrial applications.. Again we continue to meet the needs of electrical

ENERGY FIJI LIMITED

ENERGY FIJI LIMITED TECHNICAL SPECIFICATION FOR PREFERRED SUPPLIER OF ISOLATING FUSE LINKS AND SOLID LINKS FOR LOW VOLTAGE DISTRIBUTION SYSTEM (LV SWITCH





Decoding Low Voltage Electrical Equipment: From

Explore the essential role of low voltage electrical equipment, from Indoor Armored Switchgear to Smart Distribution Boxes, in ensuring the safety,

IoT-Based Low-Voltage Power Distribution System

The low-voltage distribution community actively carries out applications such as station operation status monitoring, camping and distribution

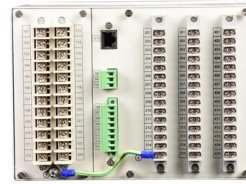


EFL's High Voltage Zone Substations ENERGY FIJI LIMIT

Invitation for Tender Energy Fiji Limited ("EFL") is responsible for generation, transmission and distribution of electricity in Viti Levu, Vanua Levu, Ovalau and Tavueni in Fiji. It owns over twenty

Analysis and Improvement of Intelligent Low-voltage Integrated Power

In view of the problem that the door of the low-voltage power distribution box is opened for no reason under the premise that the intelligent terminal has been



Distribution Network Automation Technology based on Low-voltage

With the continuous progress of social economy, the shortage of electric power is becoming increasingly severe. At this time, the development of smart grids is extremely important. At present, permanent



Low Voltage Power & Data Distribution , LEONI Group

Our intelligent and mechanical boxes in the area of power and data distribution offer modular solutions for all voltage levels and at the same time optimize functionality



A Complete Guide to LV Distribution Board , CHINT global

LV distribution boards, part of the electrical distribution system, securely distribute low-voltage power to facility circuits.





Analysis and Improvement of Intelligent Low-voltage

This paper evaluates HVDS and LVDS concepts by system performance. This is achieved by examining system losses on HV and LV distribution networks in radial AC distribution systems.



Strategic partnership to boost electrical sector

The partnership is expected to benefit both companies by creating synergies, enhancing customer satisfaction, increasing market share and raising

How to create an intelligent distribution architecture with

They can speed up the design of their projects leveraging ABB standardized and flexible intelligent distribution solutions. Thanks to the cooperation with EPLAN,



ENERGY FIJI LIMITED TECHNICAL SPECIFICATION FOR LOW/

This document outlines the technical requirements for low voltage distribution boards for use in EFL's low/medium voltage (240 - 415V AC) distribution network.



Intelligent Distribution , Solutions , ABB

Intelligent Distribution Solutions for smart low voltage electrical distribution Digital technologies such as Cloud Computing, Big Data, Internet of Things (IoT),



fenrg-2022-902715 1..9

The intelligent distribution station area is based on the intelligent perception device as the core, supporting intelligent low-voltage equipment in order to support the new energy cooperative

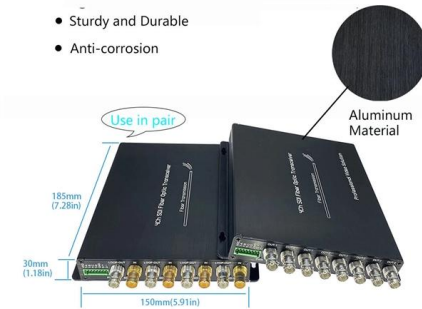
(a)at least one point of the system must be connected with earth; (b)in a 3-wire direct current system, the intermediate conductor must be earthed; (c)in a low voltage or medium voltage 3-phase 4-wire





High Quality Aluminum Housing with Compact Size

- Sturdy and Durable
- Anti-corrosion



JP Series Low Voltage Integrated Distribution Box /

JP cabinet refers to a compensating distribution cabinet used in low-voltage distribution systems & comma; usually installed under transformers and having

Electrical AC/DC Power Distribution Box & Cabinet for Industry

As a power distribution equipment company, we supply high-quality power distribution equipment including high-voltage distribution box, low voltage electrical distribution box, industrial power



Contact Us

For datasheets, pricing, or custom telecom energy solutions, please visit:
<https://koskolong.co.za>