



Adam Tas Corridor Energy

Fiber Optic Cable Line Spacing Rule Table





Fiber Optic Cable Line Spacing Rule Table



FIBER OPTIC CONSTRUCTION STANDARDS

Fiber optic cable sequential numbers are required at each pole location and vault wall. Sequential numbers will identify conduit length, and slack left in vaults and at poles.

Summary of NESC Clearances to Communication Cables see NESC

** Fiber Optic Cables in the supply space (Rule 224A) will have the same required clearance to communication cables in the communication space as a multi-grounded neutral (Rule 235C)



FOA Standard For Installing Fiber Optic Cable Plants

The type of fiber optic cable and the fibers in the cable should be chosen appropriate for the type of communications system(s) being supported, the type of installation and the environment in which the

Requirements for the Attachment of Communication Cable Facilities

No longitudinal third party owned fiber optic cable attachments are permitted on the



overhead transmission system (69 kV and above)
unless it is in the communication space on an
under built



Fiber Optic Cable Distance: A Comprehensive Guide

Learn all about fiber optic cable distance and the key factors that affect it. Find out how to select the appropriate cables for your network and

FOA Standard For Installing Fiber Optic Cable Plants

Fiber optic cables may contain multimode optical fibers, singlemode fibers or a combination of the two, in which case it is generally referred to as a "hybrid" cable.



OSP Civil Works Guide-FOA

OSP Fiber Optics Civil Works Guide An updated version of this booklet is now available as a textbook on Amazon, is included in the FOA Reference Guide to Outside Plant Fiber Optics and as a section



The FOA Reference For Fiber Optics

All fiber optic applications are not the same. At the FOA, we're mainly concerned with communications fiber optics - telco, CATV, LAN, industrial, etc., but fiber optics



IEEE 525-2007_accepted

Fiber-optic cables are often pulled for much longer distances than metallic conductor cables. These long pulls minimize the number of splices in fiber-optic cable which is desirable for fiber performance.

The FOA Reference For Fiber Optics

Passive loss is made up of fiber loss, connector loss, and splice loss. Don't forget any couplers or splitters in the link. If the specifications for a type of system or



Optical Fiber Cable Installation Guideline

Installation procedures for open placement of fiber optic cables are the same as for electrical cables. Care should be taken to avoid sudden, excessive force so as not to violate tensile load and radius



GENERAL INFORMATION

For fiber optic cables, the National Electric Code (NEC) conduit fill tables apply only when the cables have metallic members or are placed in conduits with electrical power cables.



General Optical Fiber Cable Installation Considerations

Some key considerations for installing optical fiber cable are highlighted below. Failure to follow these guidelines may result in damage or attenuation increases of the optical fiber or cable.



Wiley Online Library , Scientific research articles, journals, books

Hier sollte eine Beschreibung angezeigt werden, diese Seite lässt dies jedoch nicht zu.





101 Guidelines for Fiber Optic Cable Installation

Maintain proper clearance between the fiber optic cable and power cable at all times. Always make allowances for power cable sag due to weather and current conditions.

General Optical Fiber Cable Installation Considerations

General Optical Fiber Cable Installation Considerations Some key considerations for installing optical fiber cable are highlighted below. Failure to follow these guidelines may result in damage or



InstallGuide

This FOA Technical Bulletin describes recommended procedures for installing and testing cabling networks that use fiber optic cables and related components to carry signals for communications,

Fiber Optic Cable Bend Radius or Diameter

All fiber optic cables have specifications that must not be exceeded during installation to prevent irreparable damage to the cable. This includes pulling



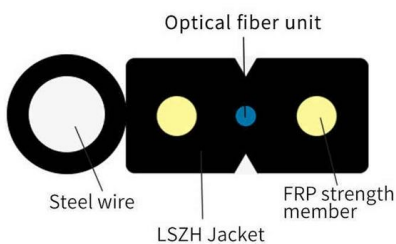
Fiber optic cabling tables

Fiber optic cabling tables 1 issues Example Table 158-17 (tables in 159 & 160 have similar issues)



101 Guidelines for Fiber Optic Cable Installation

A fiber optic cable should be tested three separate times during an installation: on the reel, the splicing test, and the final acceptance test. Extreme caution should



The FOA Reference For Fiber Optics- Installing Fiber

The normal recommendation for fiber optic cable bend radius is the minimum bend radius under tension during pulling is 20 times the diameter of the cable. When



The FOA Reference For Fiber Optics

Bottom Line High fiber count cables allow extremely high fiber counts in small cable sizes, perfect for dense applications in data centers and metro areas With so



Standard for Installing and Testing Fiber Optics

Although most fiber optic cables are not conductive, any metallic hardware used in fiber optic cabling systems (such as wall-mounted termination boxes, racks, and patch panels) must be grounded.

Direct-Buried Installation of Fiber Optic Cable

Cable Precautions / Specifications CAUTION: Take care to avoid cable damage during handling and installation. Fiber optic cable is sensitive to excessive pulling, bending, and crushing forces. Any



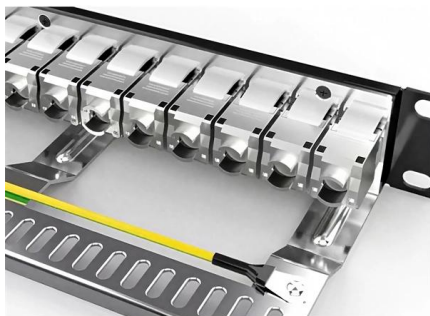
Finding the Right Size Innerduct Conduit for Fiber Optic

While innerduct protects fiber optic cables installed throughout telecommunications spaces and pathways, it is also ideal for segregating and managing cables. The



Frequently Asked Questions

Knowing that the lifetime of fiber optic cable plants are ~40 years, it makes sense to plan ahead for future applications, installing lots of fibers, leaving lots of open



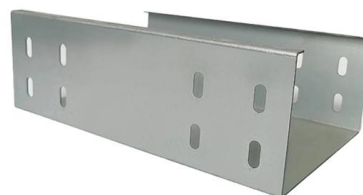
WORKMANSHIP STANDARD FOR FIBER OPTIC TERMINATIONS,

12.2.1 Fiber optic cable assemblies should not be combined in the same wiring bundle as wire or coaxial cable assemblies to ensure they are not exposed to handling practices that are acceptable for



Fiber Optic Cable Range: Comprehensive Guide -

Fiber optic cable range explained with key tips on distance, types, and setup to keep connections stable, fast, and ready for future upgrades.





Fiber Optic Cable Range: Comprehensive Guide

Fiber optic cable range varies depending on whether you're using single or multimode fiber. Learn the potential for both cable types.

WORKMANSHIP STANDARD FOR FIBER OPTIC TERMINATIONS, CABLE

12.2.1 Fiber optic cable assemblies should not be combined in the same wiring bundle as wire or coaxial cable assemblies to ensure they are not exposed to handling practices that are acceptable for



Contact Us

For datasheets, pricing, or custom telecom energy solutions, please visit:
<https://koskolong.co.za>