



**Adam Tas Corridor Energy**

# **Fiber optic cable rearward reflection signal**





## Overview

---

Optical return loss (ORL) measures how much light reflects back in fiber optic systems. Reflectance (which has also been called "back reflection" or optical return loss) of a connection is the amount of light that is reflected back up the fiber toward the source by light reflections off the interface of the polished end surface of the mated connectors and air. The reflection above the fiber backscatter level, relative to the source pulse, is called reflectance. This is always measured in dB (decibels) and will be displayed as a negative number.



## Fiber optic cable rearward reflection signal

---

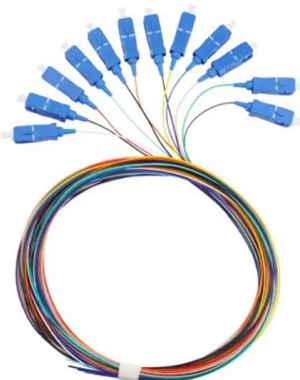


### Signal reflection

In telecommunications, signal reflection happens when a signal is transmitted along a transmission medium (such as a copper cable or an optical fiber) and part of it is reflected back toward the source

### Fiber Optic Connection Back Reflection - Fosco Connect

Both noise sources are generated by reflection propagating back and interfering. There is also a secondary effect of increased noise caused by the back-reflection also being reflected and then



### Basic Principles of Fiber Optics Series: Optical Return

Reflection is an important consideration in fiber optics because it can cause signal loss and degradation of the fiber link. When light is reflected back

### Optical Return Loss (ORL) in Fiber Telecommunications

Optical Return Loss (ORL) in fiber optics refers to the amount of light that is reflected back toward



the source in a fiber link. It is essentially a measure of "backward"



### Six basic fiber-optic cable tests , Lightwave Online

Using an optical time-domain reflectometer test instrument, these tests analyze the operation of fiber-optic cables and their conveyance of transmitted light signals.



### What is Return Loss and Why Measure It?

Creates Multipath Interference and Degrades Signal Multiple high reflection points within a network can lead to the optical effect known as multipath interference.



### ORL & Back Reflection Guide , Kingfisher International

Application note: Practical guide and overview of optical return loss management, test methods and ORL / back reflection fault finding concepts.





## Fiber Insertion Loss and Return Loss: A Complete Guide

Discover what Fiber Insertion Loss means and how it affects signal quality in fiber cables. Get the essential insights now.



## The FOA Reference For Fiber Optics

Measuring Reflectance or Return Loss  
Reflectance Reflectance (which has also been called "back reflection" or optical return loss) of a connection is the amount

## What is Return Loss in Optical Transceivers? (RL / Back

Optical return loss (ORL) measures how much light reflects back in fiber optic systems. Higher ORL values indicate better transmission quality.



## INVESTIGATION OF OPTICAL RETURN LOSS (BACK-REFLECTION) IN OPTICAL FIBER

Fresnel back-reflection are open fiber ends, mechanical splices, and cracks in the optical fiber. Significant light is back-reflected to the source when light travels from the fiber core to air. Fresnel

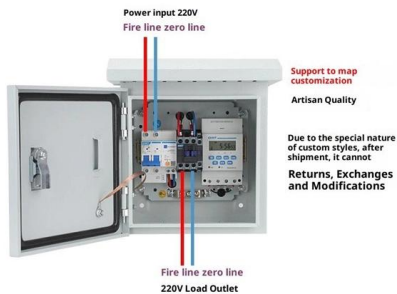


## ORL and Back Reflection in Fiber Optics

This document discusses optical return loss (ORL) and back reflection in fiber optic systems. It defines ORL as the percentage of power reflected back at a



### Product Wiring Diagram



## Connector Loss, Return Loss, and Reflectance - "Highs and Lows"

The condition and characteristics of fiber optic connectors greatly affects the performance of an installed fiber optic link. High connector loss (e.g., insertion loss), low return loss, or high

## Explanation of Reflection Features in Optical Fiber as Sometimes

Starting with the very basics of how OTDR fiber measurements are made and interpreted, this White Paper explains how reflection features are sometimes observed in optical fibers, how reflections may





## What is Return Loss in Optical Transceivers? (RL / Back

Understand optical return loss in transceivers, why it matters for network stability, and how LINK-PP modules deliver high RL performance.

### Ithy

What is Reflectance in OTDR Testing?  
Reflectance is a critical parameter in Optical Time-Domain Reflectometer (OTDR) testing that measures the proportion of light reflected back from

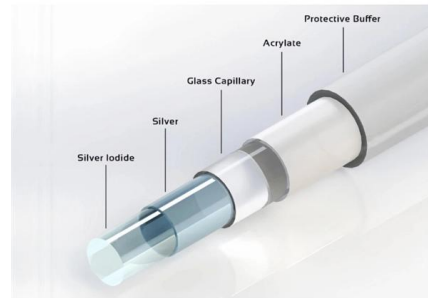


## Mysteries of Signal Refraction in Fiber Optics

Dive deep into the world of fiber optics with our comprehensive guide on signal refraction and reflection. This video demystifies the critical concepts of si

## Fiber Optical Return Loss (ORL) and Reflectance Testing, Fluke

Return loss for the entire fiber under test, including fiber backscatter and reflections and relative to the source pulse, is called Optical Return Loss (ORL). It is also given in units of dB, but always a positive



### AEN149

Back Reflection Back reflection, expressed in decibels (dB), is defined as the logarithmic ratio of reflected signal power to the incident signal power at an optical component or specific point.

### AEN149

This AE Note explains the differences between Optical Return Loss (ORL) and Back Reflectance in fiber optic systems. The driving force behind understanding these topics is the ever



### Basic Principles of Fiber Optics Series: Refraction

This article examines the principle of refraction and how it applies to fiber optics. Learn what causes refraction, how to calculate an index, and how



## What Is ORL in Fiber Optics? A Guide to Optical Return

Learn what ORL is, how it's measured, and why it matters in fiber optics. Discover causes of poor ORL and best practices to reduce signal reflection.



## INVESTIGATION OF OPTICAL RETURN LOSS (BACK

Fresnel back-reflection are open fiber ends, mechanical splices, and cracks in the optical fiber. Significant light is back-reflected to the source when light travels from the fiber core to air. Fresnel

### 8.3: Dispersion in Optical Fiber

Light may follow a variety of paths through a fiber optic cable. Each of the paths has a different length, leading to a phenomenon known as dispersion.



## How Back Reflection and Insertion Loss Affects Data

Decreasing insertion loss improves cable performance immensely. Just as with back reflection, review the specifications provided by the supplier of



## Optical Return Loss (ORL) Explained - MapYourTech

Back-reflections in fiber optic systems create a cascade of performance degradations that can range from subtle signal quality issues to



## How do Fiber Optic Cables Really Work?

Learn about how fiber optic cables work, including a discussion on refraction, bend radius, connecting fibers/index matching. Dwarvin also explains

## Fiber Optics: Refraction & Total Internal Reflection

Understanding Refraction and Total Internal Reflection Developers: Diane G. Goldstein  
Meredith Morgan Germantown Academy Building  
Products Research Fort Washington, PA Rohm & Haas Company





## Contact Us

---

For datasheets, pricing, or custom telecom energy solutions, please visit:  
<https://koskolong.co.za>