



**Adam Tas Corridor Energy**

# **Fiber optic communication fddi**





## Overview

---

Fiber Distributed Data Interface (FDDI) is a standard for data transmission in a local area network. It was also later specified to use copper cable, in which case it may be called CDDI (Copper Distributed Data Interface). Developed in the 1980s by the American National Standards Institute (ANSI), FDDI supported data transfer speeds of up to 100 Mbps, which was significantly. It was designed for large LANs that can extend up to 200 kilometers in diameter, providing reliable backbone connectivity for. Your data rides the primary loop while a spare secondary ring waits for a cable cut to heal the path.



## Fiber optic communication fddi

---



### Congo Fiber Optic Connectors Market (2025-2031) , Forecast

**Congo Fiber Optic Connectors Market Overview**  
The fiber optic connectors market in Congo is experiencing growth due to the increasing demand for high-speed internet and the expansion of

### ANSI Fiber Distributed Data Interface (FDDI) Standards

This work yielded a suite of standards cumulatively known as Fiber Distributed Data Interface (FDDI)-a packet switched, token-passing, ring-based backbone networking technology that transports data at



### Fiber distributed data interface: an overview , IEEE Conference

The fiber distributed data interface (FDDI), a 100 megabit per second (Mb/s) local area network (LAN) that uses optical fiber as the medium, and the development of the FDDI standards are

### FDDI (Fiber Distributed Data Interface)

It uses fiber optic cables as the primary medium for data transmission, though it later supported

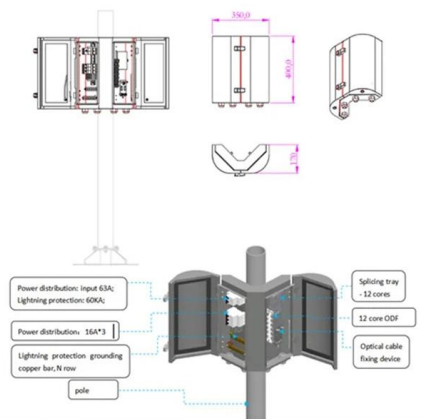


copper cables in a variant called CDDI (Copper Distributed Data Interface). FDDI operates



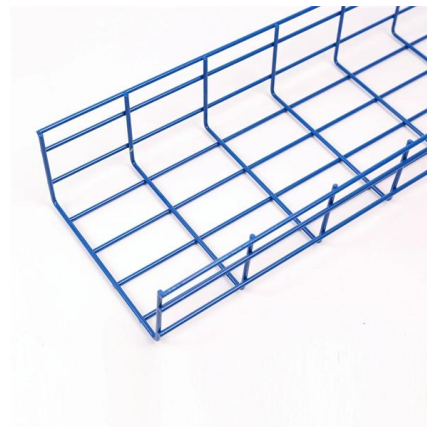
### Chapter 10: Fiber Distributed Data Interface (FDDI)

In this chapter we present information about a network technology called fiber distributed data interface (FDDI). FDDI employs a ring topology with fiber-optic



### fddi

The Fiber Distributed Data Interface (FDDI) specifies a 100-Mbps token-passing, dual-ring LAN architecture using fiber-optic cable. FDDI is frequently implemented as a high-speed backbone



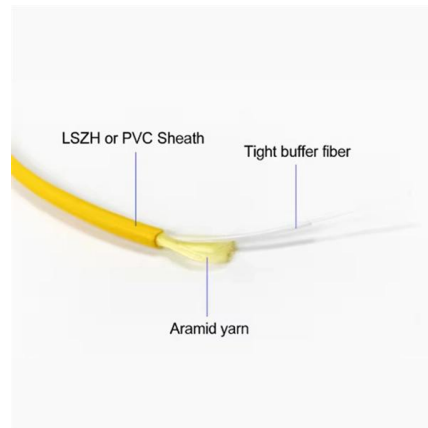
### FDDI: Advantages and Disadvantages

Explore the pros and cons of FDDI (Fiber Distributed Data Interface), including bandwidth, security, cost, and complexity.



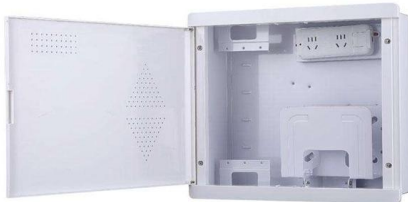
## FDDI Definition

FDDI Stands for "Fiber Distributed Data Interface." FDDI is a group of networking specifications standardized by ANSI in the mid-1980s. An FDDI network supports data transfer



## Optical fiber connector

An optical fiber connector is a device used to link optical fibers, facilitating the efficient transmission of light signals. An optical fiber connector enables quicker



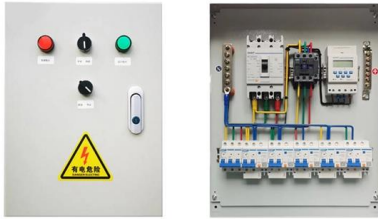
## Ethernet

Handbook of Fiber Optic Data Communication. pp. 387-416. doi: 10.1016/B978-0-12-401673-6.00016-7. ISBN 978-0-12-401673-6. A link aggregation, or



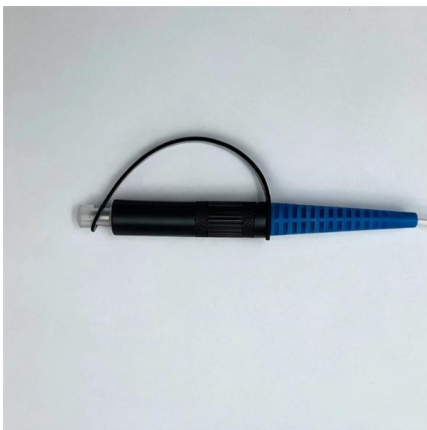
## Fiber Distributed Data Interface

Fiber Distributed Data Interface (FDDI) is a standard for data transmission in a local area network. It uses optical fiber as its standard underlying physical medium.



## What is FDDI? , FS Community

High Signal Integrity: Since FDDI uses fiber optic cables, it is immune to common sources of interference like electromagnetic interference (EMI) and radio frequency interference



## Fiber Distributed Data Interface (FDDI)

Fiber Distributed Data Interface (FDDI) is a set of ANSI and ISO standards for high-speed data transmission in local area networks (LANs) using fiber optic cables.

## What is FDDI, Advantages of FDDI

What is FDDI, Advantages of FDDI Fiber Distributed Data Interface (FDDI) is an expensive LAN technology that employs a pair of fibre-optic rings. One is primary ring and the second ring is used to





## What is FDDI (Fiber Distributed Data Interface)?



FDDI (Fiber Distributed Data Interface) is a network standard that uses fiber optic connections in a local area network (LAN) that can extend in range up to 200 kilometers (124 miles).

## Fiber Distributed Data Interface (FDDI)

Fiber Distributed Data Interface, or FDDI, is a high-speed network technology which runs at 100 Mbps over fiber-optic cabling, often used for



## What Is FDDI (Fiber Distributed Data Interface)?

The optical fiber used in FDDI allowed for long-distance communication without significant signal degradation, making it ideal for creating interconnected networks across a

## FDDI

The fiber distributed data interface (FDDI), which is a standard for optical data communication used in long distance networks, provides connection



### What is FDDI?

FDDI, or Fiber Distributed Data Interface, is a set of standards for data transmission on fiber optic lines in a local area network (LAN) that can extend up to 200



### Fiber Distributed Data Interface

Fiber Distributed Data Interface (FDDI) is defined as a legacy LAN technology that operates using a primary and secondary counter-rotating fiber optic ring for network communication, providing fault



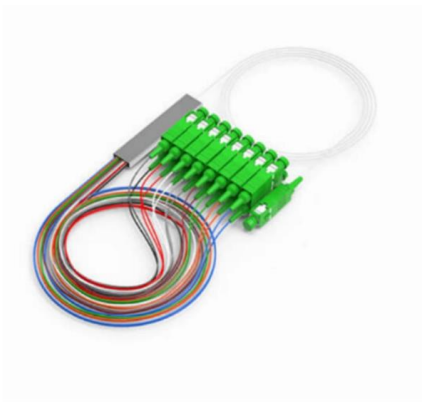
### What is FDDI (Fiber Distributed Data Interface)?

Single-mode fiber optic cable is FDDI's primary interconnect medium. FDDI standards using nonfiber optic cable also exist, such as Copper Distributed Data Interface, Twisted-Pair



## Unlocking FDDI: The Ultimate Guide

Discover the world of FDDI in data communications, its architecture, benefits, and real-world applications in high-speed networking.



### What Is FDDI (Fiber Distributed Data Interface)?

Fiber Distributed Data Interface (FDDI) is a set of ANSI and ISO standards for data transmission on fiber optic lines in a local area network (LAN) extending up to 200 kilometers.

### Fiber-Distributed Data Interface

What is Fiber Distributed Data Interface? Fiber Distributed Data Interface is a network technology that works on the OSI model's physical and



### Ring Topology Advantages: Network Benefits Explained

This design eliminates collisions (unlike Ethernet's bus topology) and ensures **\*\*deterministic communication\*\***--meaning data arrives in a predictable order. Common examples include Token



### What is FDDI (Fiber Distributed Data Interface)?

FDDI, or a fiber-distributed data interface, helps computers send data using fiber-optic cables. It works in wide or local area networks. ISO and ANSI



### Fiber Distributed/Copper Distributed Data Interface (FDDI/CDDI)

Fiber Distributed Data Interface. LAN standard, defined by ANSI X3T9.5, specifying a 100-Mbps token-passing network using fiber-optic cable, with transmission distances of up to 2 km. FDDI uses a dual



### Essential Guide to Fiber Optic Communication Systems , Course Hero

1 Module I Introduction to communication systems: Principles, components; Different forms of communications in brief, advantages of optical fiber communication, spectral characteristics.

#### Huijie engineering specific Fiber optic

HJ GROUP offers a wide variety of product types for you to choose from.





## Contact Us

---

For datasheets, pricing, or custom telecom energy solutions, please visit:  
<https://koskolong.co.za>