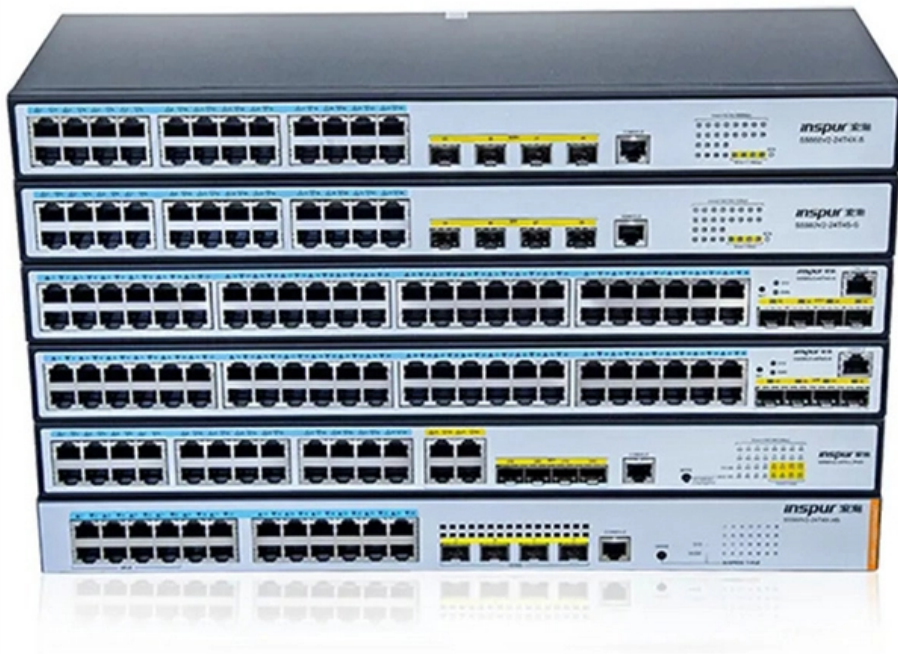




**Adam Tas Corridor Energy**

# **Fiber optic sensor through- beam penetration tube**





## Overview

---

This Through-Beam Fiber Optic Sensor offers exceptional performance and versatile design, making it an ideal choice for industrial detection applications. Available in three sizes—M3, M4, and M6—it ensures seamless compatibility with all standard fiber optic amplifiers on the. Mouser offers inventory, pricing, & datasheets for Through Beam Fiber Optic Sensors. ✓ Technical data ✓ Mounting and Installation Instructions ✓ CAD drawings ✓ Compatible Accessories

Get samples of \$ !US\$ 3. Whether detecting transparent objects, functioning in confined spaces, or tracking fast-moving targets, this. Diffuse sensors: With a diffuse sensor with intensity difference, the amount of light (light intensity) remitted by the object is evaluated. They consist of separate transmitter and receiver units that are attuned to each other.



## Fiber optic sensor through-beam penetration tube

---

### Through-beam Fiber Optic Sensor



This Through-Beam Fiber Optic Sensor offers exceptional performance and versatile design, making it an ideal choice for industrial detection applications. Available in

### Wide Beam Fiber

Introducing a tough fiber that transcends common knowledge! It has toughness that can be used in moving parts, toughness that can be bent with



### Through Beam Optical Sensors - Mouser

Through Beam Optical Sensors are available at Mouser Electronics. Mouser offers inventory, pricing, & datasheets for Through Beam Optical Sensors.

### FT610 Fiber Optic Sensor, Through-Beam Reflection,

Optical fiber sensor is a kind of sensor which changes the state of the measured object into



measurable optical signal. It has strong anti-interference ability, fine



### **Fiber Optic Sensor Cable, 2M Array-type, Thru-beam,**

Our thru-beam fiber optic sensor cable can detect an object with a minimum size of 30 mm. This 2M array-type sensor cable is ideal for industrial automation,



### **Products**

photoelectric sensors including fiber sensors, displacement sensors, vision sensors, LED lightings for machine vision, non-contact thermometers and accessories for



### **E21317**

All information about the E21317 at a glance. We assist you with your requirements. Technical data Mounting and Installation Instructions CAD drawings Compatible



## Plastic Fiber-Optic Cable Through-Beam Mode K20

Plastic fiber-optic cables are very flexible and suitable for use in confined spaces. The fiber optics are supplied in 2 m lengths. Special lengths of up to 50 m are



## Fiber optic sensors and fiber optics , Baumer international

The selection of the right fiber optic sensor and the suitable fiber optics are crucial for reliable object detection even under demanding environmental conditions.

## Through Beam Fiber Optic Sensors - Mouser

Learn More about Panasonic Industrial Automation panasonic ft thru beam sensors Datasheet 16In Stock 1: \$152.00 10: \$136.80 25: \$130.72 Buy Min.: 1Mult.: 1 Details Through Beam 3.6 m Fiber



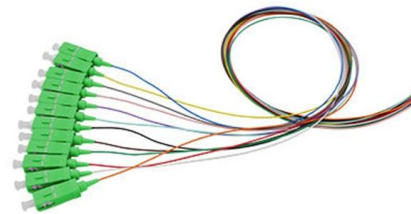
## FT-A11 PANASONIC, Fiber Optic Sensor, Through

Buy FT-A11 - PANASONIC - Fiber Optic Sensor, Through Beam, Wide Beam. Farnell® UK offers fast quotes, same day dispatch, fast delivery, wide inventory,



### Through Beam Fiber Optic Sensors - Mouser

Through Beam Fiber Optic Sensors are available at Mouser Electronics. Mouser offers inventory, pricing, & datasheets for Through Beam Fiber Optic Sensors.



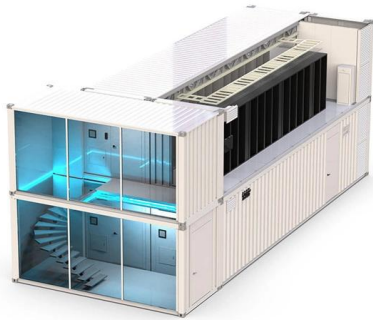
### Through-Beam Fiber Optic Sensors - Mouser

Through-Beam Fiber Optic Sensors are available at Mouser Electronics. Mouser offers inventory, pricing, & datasheets for Through-Beam Fiber Optic Sensors.

### Thru-Beam Sensors

Thru-beam sensing is the most efficient sensing mode which results in the longest sensing ranges and highest excess gain. This high gain enables through-beam sensors to be reliably used in foggy,





## Through Beam Fiber Optic Sensors - Mouser

Mouser offers inventory, pricing, & datasheets for Through Beam Fiber Optic Sensors.

## FT Thru-Beam Type Fiber Optic Sensors

Panasonic Industrial Automation FT Thru-Beam Type Fiber Optic Sensors feature tough, high-quality fiber and a reduced risk of breaking and



### E20714

All information about the E20714 at a glance. We assist you with your requirements. Technical data Mounting and Installation Instructions CAD drawings Compatible



### E20703

All information about the E20703 at a glance. We assist you with your requirements. Technical data Mounting and Installation Instructions CAD drawings Compatible



### Photoelectric Through Beam with Fiber-Optics

Challenge: Photoelectric sensors are often used with fiber-optic cables in the through-beam/opposed mode. While there are numerous advantages/trade-offs associated with the through-beam mode, the



### Fiber Unit

The FU Series offers a wide variety of options including thru-beam, reflective, retro-reflective and definite reflective sensing heads. Additional options include those



### E20615

All information about the E20615 at a glance. We assist you with your requirements. Technical data Mounting and Installation Instructions CAD drawings Compatible





## High Penetration T610 Through-Beam Fiber Optic Sensor 0-400mm

High Penetration T610 Through-Beam Fiber Optic Sensor 0-400mm Long-Distance Detection Anti-Bend Wear-Resistant Probe, Find Details and Price about Fiber Optic Sensor M6 Through-Beam Fiber



### E20753

For installation with limited mounting space  
Operation as through-beam sensor Very long range  
For cutting to size Small bending radius

### E20827

All information about the E20827 at a glance. We assist you with your requirements. Technical data Mounting and Installation Instructions CAD drawings Compatible

**EFFICIENT FIELD TERMINATION**

1. **PREPARE** - Strip and clean the fiber
2. **INSERT** - Fast and easy insertion
3. **LOCK** - Secure connection achieved

**No Polishing | No Epoxy**

Eliminates cable excess length and pigtail splice storage.  
Designed for high-efficiency onsite installation.

## Through-beam sensors

Through-beam sensors from Balluff serve to detect objects reliably, regardless of surface, color, material - even with a heavy gloss finish. They consist of separate



**Strengthen door locks**  
More durable and aesthetically pleasing



**Grounding screw**  
More aesthetically pleasing and safer



**Removable hinges**  
Make operation more convenient



**Sealing strip**  
Dustproof and waterproof

### **150505 en v2.0 Fibre-optic cable unit SE through-beam sensor design**

The emitter of the optical proximity sensor emits pulsating infrared light. The light is conducted to the sensing location through the emitting fibre-optic cable with separate sensing head.



### **E20606**

For installation with limited mounting space  
Operation as through-beam sensor Long range  
For cutting to size Small bending radius

### **fiber optic through-beam and dif. reflection sensors**

The ipf plastic fiber optic systems consist of a flexible plastic fiber with a sensing head and an optoelectronic fiber optic amplifier. The principle of operation is similar to a through-beam sensor or





## E20823

All information about the E20823 at a glance. We assist you with your requirements. Technical data Mounting and Installation Instructions CAD drawings Compatible

### Fiber optic sensors and fiber optics , Baumer international

A fiber optic sensor and two fiber optics made of plastic or glass fibers make up a fiber optic system. The sensor contains a light source (transmitter), typically an



## Contact Us

---

For datasheets, pricing, or custom telecom energy solutions, please visit:  
<https://koskolong.co.za>