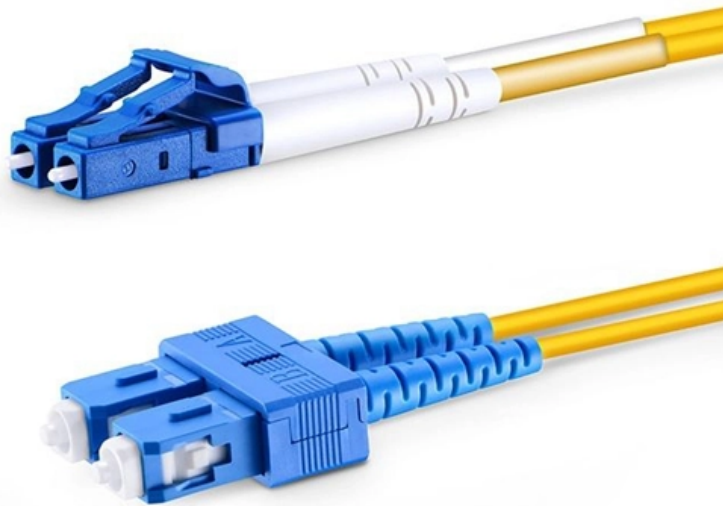




Adam Tas Corridor Energy

Fire protection distribution boxes are power boxes





Fire protection distribution boxes are power boxes



Distribution Boxes: Types and Functions

A distribution box (distribution board/DB box) distributes incoming power to multiple circuits and typically houses protective devices such as

Explosion Proof Junction Box Types, Prices

Network and communication equipment Power distribution junctions Why Do Electricians and Engineers Need Explosion-Proof Junction Boxes? For



Distribution Boxes Explained: Types, Functions, and

Learn about distribution boxes, their types, functions, and safety features to ensure efficient and secure electrical power distribution in any building.

The Importance of Distribution Boxes in Electrical Systems

A distribution box is necessary for several reasons: Safety: The miniature circuit breakers in



the distribution box are designed to protect your



FireBox

To support firefighting operations, it is imperative that certain technical equipment is supplied with power for a sufficient period of time after a fire breaks out.



Understanding Distribution Boxes:A Comprehensive Guide

A distribution boxes is an essential device that manages the safe and efficient flow of electrical power throughout different areas of a building or facility.



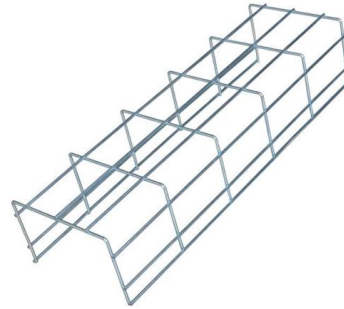
Fire prevention measures of distribution box

The distribution box is a complete set of devices for centralized installation of switches, instruments and other equipment. Therefore, it is very important to take fire prevention measures for distribution box.



Power Distribution Boxes Explained Simply

Learn what a power distribution box is, how it works, key components, types, and why it's vital for safe and efficient electrical systems.



What does a power distribution box do ?

The main function of the distribution box is to receive power and distribute it to various circuits. It can protect circuits, regulate voltage, and isolate and control

Explore Power Distribution Box Types and Functions

It integrates power distribution, protection, and monitoring capabilities, and is responsible for distributing power to entire commercial or residential



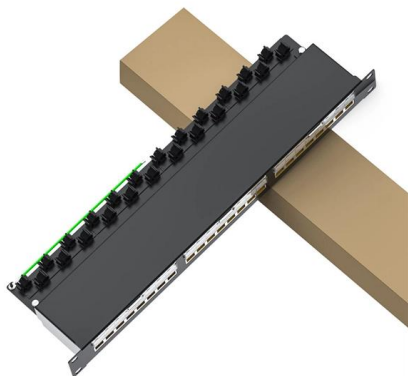
Complete Guide For Distribution Boxes Types

Distribution boxes, also known as electrical distribution boards or panels, are pivotal components in electrical systems, ensuring the safe and organized distribution of



Distribution Board vs. Distribution Box: What's the

A distribution box is a compact electrical enclosure designed to help safely manage local power distribution. It doesn't handle large-scale circuit



What Is an Electrical Distribution Box? A Complete Guide

The electrical distribution box serves a critical role in the safe distribution of power by centralizing circuit control and preventing overloads and short circuits. Its design

The Complete Guide to Distribution Box: Installation, Types & More

Blog The Complete Guide to Distribution Box: Installation, Types & More By Admin Aug 2, 2025 No Comments # distribution box Introduction Electrical systems power our homes, offices, and



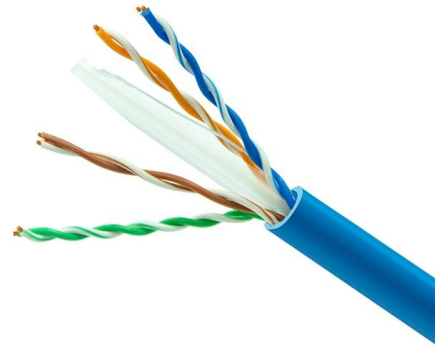


The Ultimate Guide to Distribution Box Types

Discover the key types of distribution boxes with NUOMAK's comprehensive guide. Learn about Main Distribution Boards (MDB), Consumer Units, Transfer

What is the AC distribution box?

This article gives an overview of AC distribution boxes covering their functions (power transmission distribution protection control) applications and firefighting systems for safety in power systems

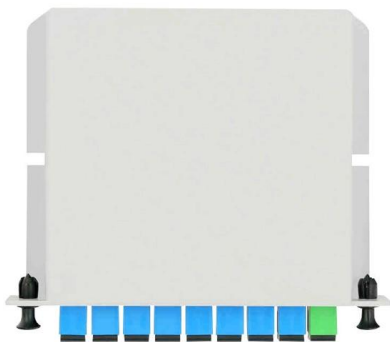


How Does a Power Distribution Box Work

Learn how a power distribution box works step by step--from incoming power to circuit protection and smart monitoring--for safe, efficient electricity delivery.

What is a Distribution Box? - A Comprehensive Guide

Key Components of a Electrical Distribution Box
Circuit breakers are essential for protecting electrical systems by cutting off power during overloads or



Expert Guide: Selecting Temporary Power Distribution Boxes

Industrial sites demand electrical systems that perform under pressure. Temporary power distribution boxes handle that role, routing electricity where it needs to go while keeping

Understanding Distribution Boxes: A Comprehensive Guide

Learn what a distribution box is, its types, and how to choose the right one for your project. Includes clear examples and expert tips.



DB BOX(Electrical Distribution Box): Everything You

Wiring: Next, the electrical cables will be connected to the incoming power source (like the main distribution panel) and the outgoing circuits. Circuit





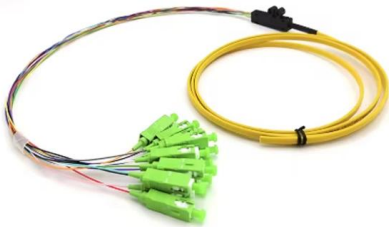
Understanding Power Distribution Boxes: Types, Features, and

Power distribution boxes are vital components in electrical systems, providing safe and efficient electricity distribution across various applications. With numerous types available, including



CE-TEK

CE-TEK Enclosures are designed and manufactured to the latest European standards and are available in a wide range of materials and sizes. The company



Fire protection cable boxes: Spelsberg

Fire protection junction boxes In the event of a fire, only absolutely reliable products prevent the spread of fire and guarantee safe function of electrical systems relevant for rescue and escape in buildings



What Is an Electrical Distribution Box? A Complete Guide

Distribution boxes serve a critical role in the safe distribution of electrical power across various circuits within residential, commercial, and



Contact Us

For datasheets, pricing, or custom telecom energy solutions, please visit:
<https://koskolong.co.za>