



**Adam Tas Corridor Energy**

# **Fireproof partition plate dimensions and specifications for cable trays**





## Overview

---

Cover plates should be square, of consistent suitable dimensions, painted evenly, and used to close the opening. Technical guide to firestopping cable tray and slab penetrations in electrical shafts; specifies materials, packing limits, waterstop heights and installation. All gaps inside and around metal trunking must be sealed tightly and be complete both internally and externally. \* Two (2) sticks of moldable putty (part number FSP-MPS) are also needed for each opening. UL Listed Systems Concrete Wall - C-AJ-4056 3 HR F-Rating, 3/4 HR T-Rating Gypsum. In the power industry, the purpose of implementing fire-blocking sections (fire sections/fire partitions). This document outlines the key requirements for cable tray layout, installation, and fireproofing in industrial and commercial environments.



## Fireproof partition plate dimensions and specifications for cable tra

---



### Technical Guidelines for Cable Tray Installation and

Cable tray installation must comply with specific technical standards to ensure electrical safety, system reliability, and long-term maintainability. This document

### 26 05 36 Cable Trays for Electrical Systems

If cable trays are sized for future cables, specify provisions for penetrations with sleeves through fire-rated partitions or use "repairable" firestop-sealing material.



### Wire Mesh Cable Trays Technical Information Detailed,

Wire Mesh Cable Tray Detailed Information: a. A job site, field adaptable support system primarily for low voltage telecommunication and fiber optic cables. These

### cable tray technical specifications

Armorduct cable tray systems are usually assembled using M6 roofing bolts particularly for couplers, fishplates and connection to supporting framework. It should be noted that independent



### **EZ-Path Cable Tray Retrofit Device**

The EZ Path® Cable Tray Retrofit Device provides a fast, code-compliant way to restore firestopping performance in cable trays with up to 100% visual fill.



### **Fire Resistant Design and Detailing: Firewalls, Fire Barriers and Fire**

Discuss detailing aspects of fire resistance for fire walls, fire barriers and fire partitions including material and assembly options, continuity, structural stability, and penetrations.



### **GUIDE CABLE TRAYS TECHNICAL**

NEMA VE 1-2017 Specifies requirements for metal cable trays and associated fittings designed for use in accordance with the rules of Canadian Electrical Code, Part I and the National Electrical Code®





## Cable Tray Specifications and Accessories

This document provides specifications for perforated and solid cable tray systems including: - Straight sections that come in various heights, bottom types, return



## Trunking and Cable Tray Protection

Trunking and cable trays are designed to house and protect electrical wiring, which can be vulnerable to damage from environmental factors, physical impact, or

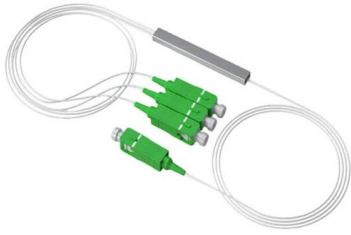
## Fire Rated Cable Encasements: Invicta Durasteel

Our 4-hour fire rated cable encasements provide comprehensive fire and blast protection, shielding cables from fire and containing high voltage cable fires



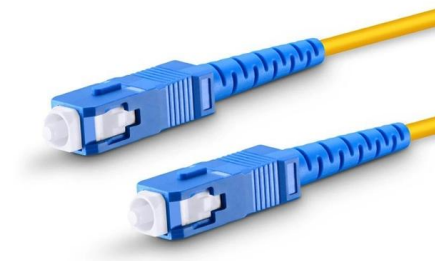
## Cable Tray Technical Guide A practical guide to product selection and

A practical guide to product selection and installation This guide for engineers and installers has been developed by ABB as a practical reference regarding cable tray characteristics, installation, and



## Suppression of cable tray fire in utility tunnel power compartments

Utility tunnel cable systems face critical fire safety challenges due to dense cable arrangements and complex flame spread dynamics. This study investigates the suppression

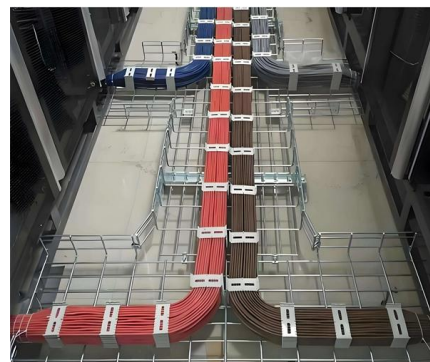


## How to set up the fireproof cable tray partition?

The installation position of the fireproof bridge partition should be at least 100 millimeters away from the edge of the bridge to ensure that the partition can

## EZPATH , Legrand Data Center Solutions

The product's innovative design provides a safe and reliable pathway for cables and other vital equipment to pass through fire-rated walls and floors. With its easy





## Perforated Type Cable Trays, Cable Trays,



These cable trays also available as Welded Type with high grade galvanized sheet and other materials such as painted and powder coated finish on mild steel.

## Fireproof Cable Trays with Partitions for Pre-installation of

Fireproof Cable Trays with Partitions for Pre-installation of Electrical Construction Cables, Customized by Manufacturers No reviews yet Shenzhen Anchi Industrial Co., Ltd. 1 yr



## Instrument FireMaster® fire protection cable tray

The FireMaster instrument control cable tray system is Factory Mutual Approved for 30 minute hydrocarbon fire protection of instrument control cable trays in accordance with ASTM E1725-95

## Firestopping Requirements for Cable Trays and

Technical guide to firestopping cable tray and slab penetrations in electrical shafts; specifies materials, packing limits, waterstop heights and

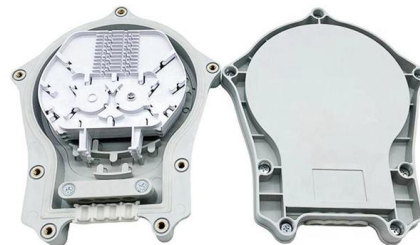


### **Fireproof Cable Tray Enclosures: Keep Cabling Systems**

Sinisi Solutions works with major utilities and clients to design cable enclosures that protect critical cabling and cable tray setups from heat and fire, and blasts. Sinisi

### **Guide to Fire-blocking Sections (Fire Sections/Fire**

In the power industry, the installation of fire-blocking sections (fire-proof sections/fire-proof partitions) on cable trays is an important measure to



### **RECOMMENDED SPECIFICATIONS OF JUNCTION BOX AND CABLE TRAY**

The length of cable tray is a crucial dimension for selection as it is based on several criteria such as strength, load, span, and ease of handling and installation.



## CABLE TRAY SYSTEMS GUIDE

Some applications may require the cable tray to support the weight of a single, dead object in addition to the cable loads. Specifications typically require this to be applied at the midpoint of the span between



### Cable tray manual

Nearly every aspect of cable tray design and installation has been explored for the use of the reader. If a topic has not been covered sufficiently to answer a specific question or if additional information is

### B-Line series Cable Tray Design Considerations

Available in 3, 4, and 6-inch widths with ventilated or solid bottoms, channel cable tray is ideal for smaller instrumentation cables and cable tray runs involving a small number of cables.



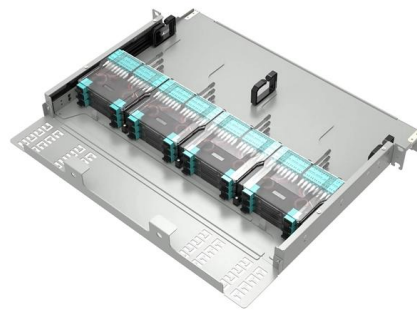
### Full cable tray systems specification document

B. Cable tray systems are defined to include, but are not limited to straight sections of [ladder type] [trough type] [solid bottom type] [channel type] cable trays, bends, tees, elbows, drop-outs, supports



## News

· Use of Adequate Steel Plates: Implement 4mm thick steel plates for protection. The width and height of these plates should be extended by an additional 200mm compared to the cable tray's dimensions.



## Fire stop section of the cable tray and cable management NEMA

3M Fire Barrier Moldable Putty+ is a one-part, halogen-free product designed to firestop electrical outlet boxes and a wide variety of through-penetrations including cable, conduit, insulated pipe and metal

## cable tray technical specifications

Surfaces of system components which are likely to come into contact with cables during installation are inspected to ensure they shall not cause damage to the cables when installed correctly.





## Contact Us

---

For datasheets, pricing, or custom telecom energy solutions, please visit:  
<https://koskolong.co.za>