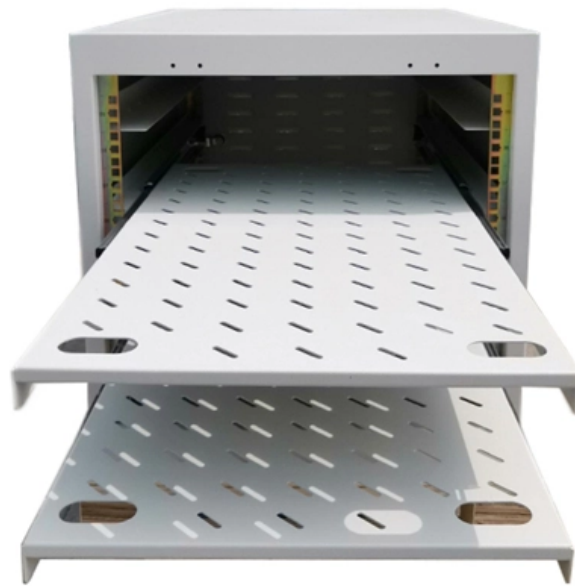




**Adam Tas Corridor Energy**

# **Fireproof separation spacing for cable trays**





## Overview

---

The gap area between firestop packs and cables should not exceed 1 cm<sup>2</sup>, and the packing thickness should be not less than 24 cm. This document outlines the key requirements for cable tray layout, installation, and fireproofing in industrial and commercial environments. Route Planning and Layout Principles Coordinate with Building Structure: Cable tray routing should align with architectural design, avoiding unnecessary. \* Two (2) sticks of moldable putty (part number FSP-MPS) are also needed for each opening. UL Listed Systems Concrete Wall - C-AJ-4056 3 HR F-Rating, 3/4 HR T-Rating Gypsum. Separation Gap for Primary and Secondary Life Safety Cable Trays (Roof Installation).



## Fireproof separation spacing for cable trays

---



### Cable Tray Technical Guide A practical guide to product selection and

A practical guide to product selection and installation This guide for engineers and installers has been developed by ABB as a practical reference regarding cable tray characteristics, installation, and

### Fire rated wall , If

Cable trays should not pass through a fire rated wall because the metal tray can conduct heat through the wall and may ignite materials on the other side. However, if the cable tray does pass through a



### Fire Rated Cable Supports

Note 1 - Fire-rated cable supports include screws, nails, anchors and clips, saddles, ties, cleats & similar. Note 2 - In all buildings, possible passageways include all doorways, accessible window

### Safety Distance Between Cable Trays: What You Need

Learn the right safety distance between cable trays and ventilation or drainage systems. Follow



these expert guidelines to ensure proper function and



### Cable Support Distances

Cable Support Distances Although BS 7671 touches on the subject of cable supports, it does not detail specifically what these support distances should be. Section 522.8 (Other Mechanical Stresses (A))

### Cable Tray Spacing Standards for Installation and Safety

Discover the essential cable tray spacing requirements for safe and efficient installation. Learn key standards, horizontal and vertical spacing, and more.



### Separation Gap for Primary and Secondary Life Safety

This design note adopts a 300 mm horizontal air-gap separation between primary and secondary life-safety trays on roofs, based on these



## Guide to Fire-blocking Sections (Fire Sections/Fire

Choosing appropriate fire-blocking section materials can effectively improve the fire-proof performance of cable trays and reduce the losses caused



## Cable Trays and Fire Protection Systems: Keeping

Learn how Cable Trays and Fire Protection Systems work together. They protect cables and help fire alarms, sprinklers, and emergency systems

## Installation Of Cable In Cable Trays: NEC, Safety

Installation of Cable in Cable Trays ensures proper routing, cable management, NEC compliance, grounding, fire safety, and load capacity.



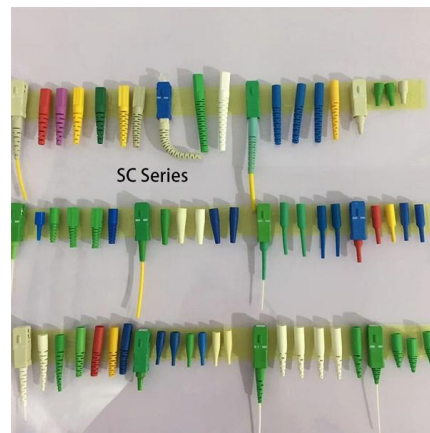
## Cable Separation Standards , Winnie Industries

Maintaining proper separation between power, data, and limited energy cabling is foundational to system performance, safety, and code



### NEC Standards for Cable Trays: Grounding, Fill Capacity

These trays are ideal for use in commercial offices, industrial facilities, data centers, and smart building infrastructure, where reliability, accessibility, and efficient cable management are



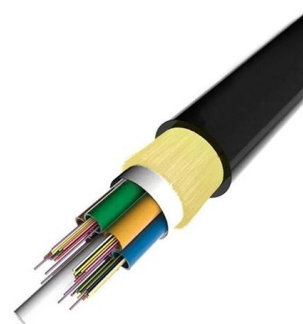
### Fire-Resistant Cable Trays in High-Risk Environments

Explore the importance of fire-resistant cable trays in high-risk environments. Learn about the best materials and practices to



### Wiring Matters Issue 78 November 2019

Expanded polystyrene and PVC sheathed cables  
This is a more significant, although less common, problem than the goo, especially in loft spaces of dwellings. Expanded polystyrene is a light,





## Firestopping Requirements for Cable Trays and

The gap area between firestop packs and cables should not exceed 1 cm<sup>2</sup>, and the packing thickness should be not less than 24 cm. All gaps inside

### Fire stop section of the cable tray and cable management NEMA

3M Fire Barrier Moldable Putty+ is a one-part, halogen-free product designed to firestop electrical outlet boxes and a wide variety of through-penetrations including cable, conduit, insulated pipe and metal



### Firestopping cable runs

Firestopping through concrete barriers, installing wall boxes and using cable trays are the most common problems in this area. Firestopping cable trays is

### huitong-fireproof-cable-tray-company

25 Companies and suppliers for huitong-fireproof-cable-tray-company Find wholesalers and contact them directly Leading B2B marketplace Find companies now!

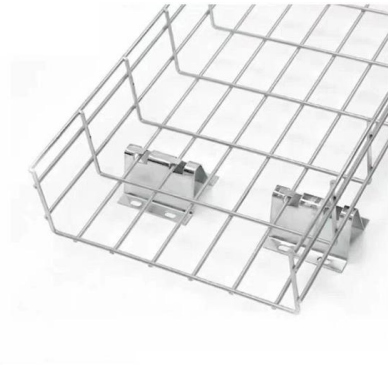


## Cable Tray Support Spacing: Key Guidelines Explained

Explore the essential cable tray support spacing requirements for safe and efficient installations. Learn NEC guidelines for perforated, ladder, and wire

## Cable Tray SHIB NAL

Cable trays are not raceways, but they are treated as a structural component of a facility's electrical system. Cable trays are a part of a planned cable management system to support, route, protect and



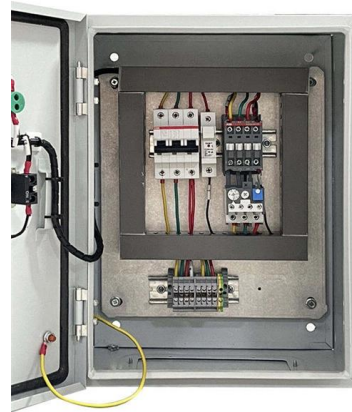
## Cable Support Distances

This provides distances for cables based on their diameter and cable type. Prysmian was instrumental in providing this information and an extract is provided in this document.



## Fireproof Cable Tray Enclosures: Keep Cabling Systems

Sinisi Solutions works with major utilities and clients to design cable enclosures that protect critical cabling and cable tray setups from heat and fire, and blasts. Sinisi



## Technical Guidelines for Cable Tray Installation and

Cable tray installation must comply with specific technical standards to ensure electrical safety, system reliability, and long-term maintainability. This document



## Fire Safety Considerations for Cable Trays: Protecting

Learn about essential fire safety measures for cable trays to safeguard your electrical infrastructure. Discover expert guidance and solutions



## Research Information Letter 0014, "Physical Separation Criteria for

This memorandum transmits the results of a completed portion of the NRC Fire Protection Research Program relating to the adequacy of cable tray separation to prevent the spread of electrically



### 910533-3\_EN

Cable support systems are generally designed with at least 50 % reserve space available for each tray. Cable tray types, supports (types and spacing) and securing systems are selected and designed



50KW modular power converter



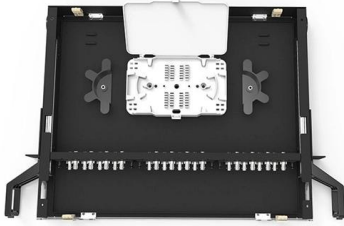
### 0708d\_PA\_Cheat\_L dd

Firestopping Cable Installations Don't introduce fire hazards when working on a new project. Ensuring your cable runs don't compromise established barriers is often your responsibility.

## Understand the Importance of Cable Tray Fire Stopping

Discover the significance of cable tray fire stopping for building safety. Learn how it prevents fire spread, safeguards occupants, and ensures compliance with fire





## **Cable Tray Technical Guide A practical guide to product selection and**

As per the NEC, the maximum allowable rung spacing is 9 inches (230 mm) when cable tray carries sin-gle-conductor cables of 1/0 to 4/0 AWG (American Wire Gauge) (Appendix I).

### **Suppression of cable tray fire in utility tunnel power compartments**

These results provide actionable guidelines for optimizing fireproof clapboard design in cable trays, offering significant implications for enhancing fire safety in dense underground



## **Contact Us**

---

For datasheets, pricing, or custom telecom energy solutions, please visit:  
<https://koskolong.co.za>