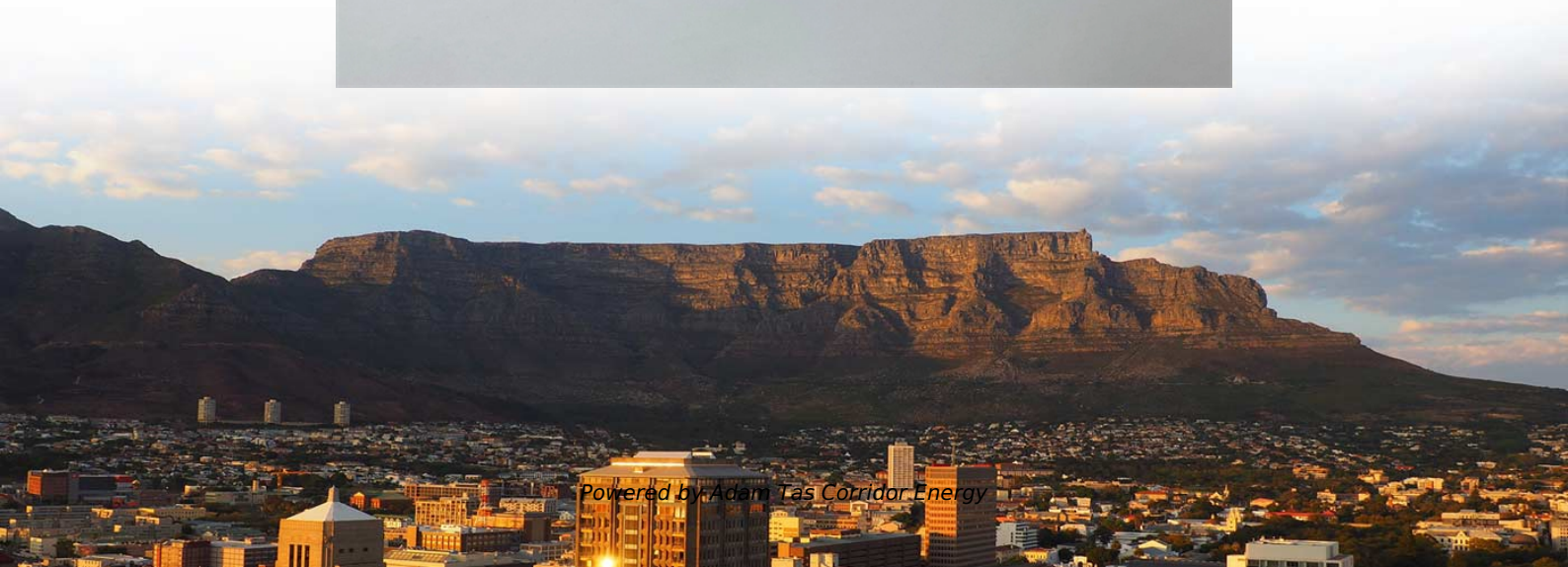




Adam Tas Corridor Energy

Fixing brackets for cable trays in steel structure factory buildings





Fixing brackets for cable trays in steel structure factory buildings



Best Fixing and Mounting Options for Cable Trays , CMW

Discover the best fixing and mounting options for cable trays and wire mesh basket trays. CMW shares tips for efficient cable management.

Cable Tray Systems: Requirements and Best Practices

Cable tray systems are structural components used to support insulated conductors and control, instrumentation, and communication cables. They are typically installed overhead, along



Master Cable Tray Installation: A Professional Step-by

Learn how to install cable trays for large-scale projects with our professional, step-by-step guide covering industry standards, safety protocols,

Best Practice Guide to Cable Ladder and Cable Tray Systems

This publication is intended as a practical guide for the proper and safe* installation of cable



ladder systems, cable tray systems, channel support systems and associated supports.



Best Practice Guide to Cable Ladder and Cable Tray Systems

Where cable ladder and cable tray support systems are fixed to primary supports (e.g. structural steel work or elements of the building) it is important to ensure that the primary supports are strong

Optimising Industrial Plant Cable Tray Systems: A

Are you wondering how to make your Industrial Plant Cable Tray Systems work better, safer, and last longer? Many plant managers and engineers



Cable Tray Installation Guidelines , PDF , Galvanization

This document provides details on installing cable trays and their support systems. It includes diagrams showing how to mount cable trays on walls using pre



Cable Tray Installation Guidelines , PDF , Galvanization

The document outlines steps for laying cables, including installing supports, fixing the tray, laying cables with proper spacing, and tying them with cable ties.

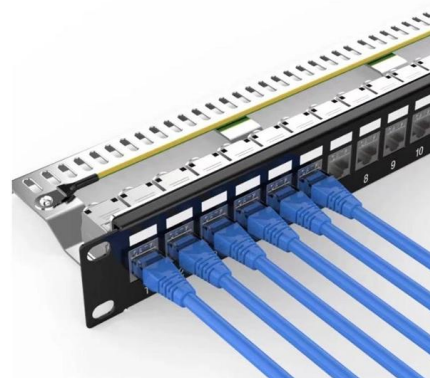


Cable Tray Technical Guide A practical guide to product selection and

In designing supports for a cable tray system, consideration should be given to the loads associated with future cable additions and any additional loading that may be applied to the cable tray system (e.g.,

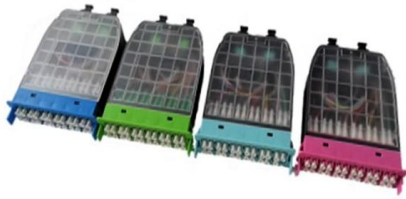
Guide to cable support systems

The systems are suspended from the ceiling with threaded rods, stand-off brackets allow raised floor mounting of cable trays, ladders and mesh cable trays. The universal systems comprise ceiling



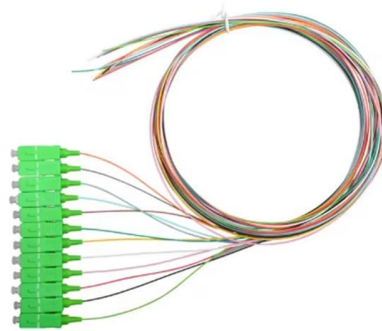
CABLE TRAY SYSTEMS GUIDE

Steel Ladder System Hubbell's NEXTFRAME® Ladder Tray is the effective and widely used cable runway that supports and delivers bundles of cable between cabinets, racks, and closets, along



Mechanical cladding Fixation

Cable Support Systems are well designed to provide necessary support for cable trays, cable ladders and trunkings. Cable supports are manufactured according to common standards from high quality



Mounting instructions

The mounting drawings of the screw-on cable tray systems show either perforated or unperforated cable trays. All the connectors, fittings and accessories shown can be mounted on both perforated and

Efficient Cable Tray Installation Methods for Organized

Discover efficient methods for installing cable trays to organize power, data, and security cables. Explore wall, ceiling, and floor mounting options





Fixings for electrical cables and other electrical

Solutions for fixing cables and other elements in electrical installations. We have references designed to cover all areas of an electrical installation, whatever the



Installation of Cable Tray, Trunking And Accessories

2. Purpose This method statement for the Installation of Cable Tray, Trunking, and Accessories shows and explains the procedure must be followed to install the cable tray and

50KW modular power converter



- Flexible Configuration**
 - Modular Design, Expanding as Required
 - Standardize, Weld, Hoist
 - Installed in Parallel for Expansion
- Powerful Function**
 - Support PV+ESS
 - Grid Support, Equipped with SVC Technology
 - On-Grid and Off-Grid Operation
- Reliable Protection**
 - Outdoor IP65 Design
 - Sufficient Protection Functions Equipped



Cable Tray Fittings & Fixings , Couplers, Brackets

High-quality cable tray fittings and fixings for secure installation. Our range

Industrial Electric Cable Trays: Dimensions and Types

Industrial electric cable trays, are fundamental to ensuring a safe and organized installation of electrical systems. These support systems are used to



Beama Best Practice Guide , Installation Of The System , Cable

2.2 Structural characteristics When considering the installation of the cable supports system it is imperative to avoid the cutting or drilling of structural building members without the approval of the



CABLE TRAY SYSTEMS GUIDE

Hubbell's NEXTFRAME® Ladder Tray is the effective and widely used cable runway that supports and delivers bundles of cable between cabinets, racks, and closets, along walls, and suspended from



Cable Bracing Systems for Steel Buildings: Factory Direct Guide

Discover cable bracing systems for steel buildings. Learn benefits, hardware, design, and installation--factory-direct supply from certified manufacturer.





Steel Cable Trays in Commercial Buildings: Balancing

This article explores how steel cable trays balance operational needs with visual appeal in commercial buildings. By integrating practical design



Technical Specification for Cable tray installation and cable laying work

1. Scope :- This specification covers the following major activities; - Fabrication and installation of Mild Steel (MS) support structure for Galvanized Iron (GI) Cable tray. - Installation of perforated GI Cable

Cable tray

In the electrical wiring of buildings, a cable tray system is used to support insulated electrical cables used for power distribution, control, and communication.



Cable Tray Technical Guide A practical guide to product selection and

A practical guide to product selection and installation This guide for engineers and installers has been developed by ABB as a practical reference regarding cable tray characteristics, installation, and



Contact Us

For datasheets, pricing, or custom telecom energy solutions, please visit:
<https://koskolong.co.za>