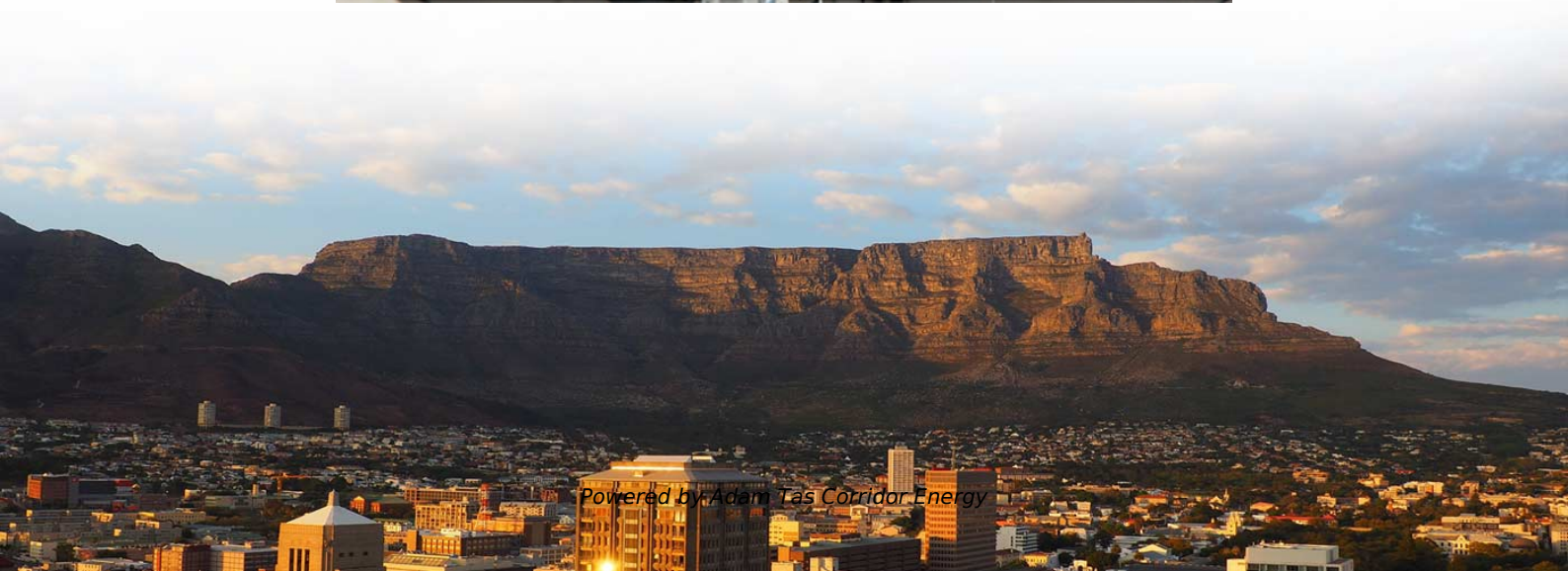




Adam Tas Corridor Energy

Ggd Distribution Box Thickness Standard





Ggd Distribution Box Thickness Standard



GGD Type

GGD type is used in the distribution of low voltage power in different power plants, mining enterprises, and transformer substations. These low voltage

Buy GGD-Type Low-Voltage Fixed Distribution Cabinet Enclosures

Designed and manufactured in compliance with national standards such as GB/T 7251.1, this enclosure guarantees high performance in demanding environments. Its robust construction ensures high



Ggd AC Metal Clad Low Voltage Enclosed Electrical

1) GGD AC LV fixed type switchgear is applicable to the distribution system with AC 50Hz, rated working voltage 380V, rated current to 3150A below in



[Hot Item] 800A Ggd Distribution Box for Assembly Line

The distribution branches are configured with NB1-63H/2 series DC miniature circuit breakers



to meet the needs of fine multi-circuit power distribution. It also integrates the NXU-1IG surge protector to



110V-480V Switchgear Electrical Cabinet Metal GGD AC Distribution Box

110V-480V Switchgear Electrical Cabinet Metal GGD AC Distribution Box XI-12 is a closed indoor distribution box, the box structure is made of thin steel plate folded and welded or bolted assembly,



Switzerland GGD Type AC Low Voltage Distribution Cabinet

The GGD type AC low-voltage distribution panel is a technical development project issued by the former Ministry of Energy in 1992, with the premise of promoting the technological progress of China's low



2. Imported design is convenient for expansion.

The design of two inlets saves space and allows for rear line entry.

GGD Power Saving Power Distribution Switchgear

As power conversion, distribution and control for power, lighting and distribution equipment in a 50kA power distribution system. This product complies with IEC43-1 international standard, GB7251-1





Tight tolerance GGD distribution boxes , Rand PV

We will work with you to ensure you have the best tight tolerance GGD distribution boxes specific needs and requirements. Our linear component design and custom-fabricated enclosures take into



Pakistan GGD Type AC Low Voltage Distribution Cabinet

The GGD type AC low-voltage distribution panel is a technical development project issued by the former Ministry of Energy in 1992, with the premise of promoting the technological progress of China's low

GGD Low-voltage fixed switchgear-Gongshun electric co.,tld.

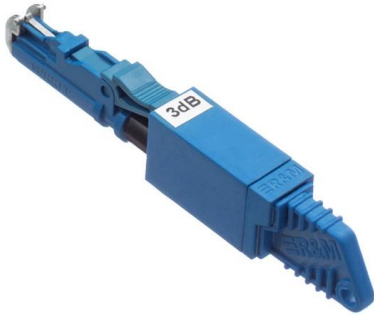
GGD fixed switchgear is engineered for power systems within industrial and mining enterprises, power plants, and substations. It accommodates AC 50-60Hz, with rated working currents up to 3150A in

Ordering information

| NCI | 1 | 2 | 3 | 4 | 5 | 6 |
|--|------------------|--------------------|------------------|------------------|--------------------|------------------|
| Model | SP1201 | SP1202 | SP1604 | SP1601 | SP1202 | SP1204 |
| Product name | Patch Panel | Patch Panel | Patch Panel | Patch Panel | Patch Panel | Patch Panel |
| Illustration | | | | | | |
| HU | 1 | 2 | 4 | 1 | 2 | 4 |
| Maximum number of poles | 144 | 288 | 576 | 144 | 288 | 576 |
| Product size (including main body and accessories) | 482.0*272*114 mm | 482.0*311*188.1 mm | 482.0*311*117 mm | 482.0*272*114 mm | 482.0*311*188.1 mm | 482.0*311*117 mm |
| Standard color code | RAL9005 | RAL9005 | RAL9005 | RAL9005 | RAL9005 | RAL9005 |

Distribution Box

Metal Distribution Box Features Continuously welded seams Foam-in-place seamless gasket 120-degree opening heavy-duty industrial hinges IP66 protection rating against dust and water according



GGD Power Saving Power Distribution Switchgear

GGD type fixed enclosed low-voltage switchgear is suitable for the power station, substation, industrial and mining enterprises and other power users. AC 50/60 Hz, rated working voltage to 660V, rated



Ggd a. C. Electrical Distribution Panel Board, Low

GGD ac low-voltage distribution cabinet conforms to IEC439 "low-voltage switchgear and control equipment", GB7251 "low-voltage switchgear and control equipment"



Ggd LV Drawer Type Distribution Box Switchgear

Featured Products General: Rockwill Electric strives to bring our customers the latest technology and competitive power system and best service for transmission and distribution line. The MNS system





GGD Low Voltage Switchgear , Industrial Power Distribution

GGD type AC low-voltage distribution cabinet complies with standards such as IEC 439 "Low-voltage complete switchgear and controlgear" and GB 7251? Low-voltage complete switchgear".

GGD low voltage fixed AC distribution cabinet 02

1? Overview GGD low voltage fixed AC distribution cabinet is suitable for power plants, substations, industrial and mining enterprises and other power users. It is used as power conversion, distribution



GGD Low Voltage Switchgear

Switchgear GGD Low Voltage Power Distribution Cabinet Rating: Rated voltage: 380V. 50-60Hz, mainly applicable in power stations.

GGD

It is an ideal replacement product for traditional low-voltage switchgear. The GGD cabinet complies with IEC 439 (Low-voltage switchgear and controlgear assemblies) and GB 7251 (Low-voltage switchgear



GGD China Low Voltage Switchgear distribution Cabinet

Jiangxi Yikai Electric Co.,LTD is one of GGD switchgear manufacturer, specialize in China low voltage switchgear,distribution panel, qualified Chinese low voltage



Grounding System Installation Standards for Distribution Boxes and

By understanding the deeper principles behind grounding standards, avoiding common installation pitfalls, and insisting on certified materials from reputable suppliers, you're not just following



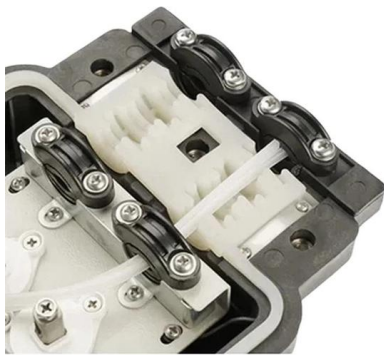
GGD Low Voltage AC Distribution Cabinet

GGD Low Voltage AC Distribution Cabinet is an advanced power distribution solution designed for various industrial and commercial applications.



GRL GGD Low Voltage Power Distribution Cabinet

GRL's GGD low voltage power distribution cabinet, featuring isolator switch and flexible copper busbar for reliable electrical distribution solutions.



Enecell , Low Voltage Fixed-mounted Switchgear

Enecell is Low Voltage Switchgear Company, Manufacturers, GGD low-voltage fixed complete equipment is suitable for power supply systems with AC 50-60Hz, rated

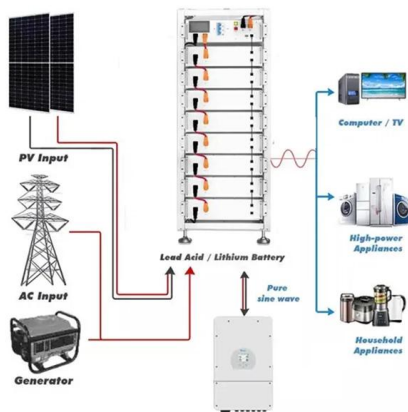
GGD Type AC Low-Voltage Distribution Cabinet

The GGD type AC low-voltage distribution cabinet is suitable for power distribution systems of power plants, substations, industrial and mining enterprises, and other electrical users with an AC



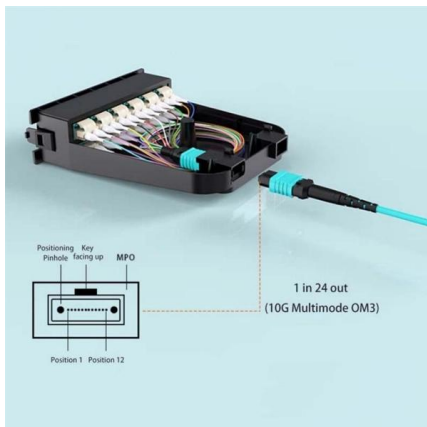
Talk about GGD distribution cabinet in detail

What does GGD mean? What does it stand for. GGD model and meaning: the first g represents AC low voltage switchgear; The second g indicates that the electrical components are fixed installation and



Vietnam GGD Type AC Low Voltage Distribution Cabinet

The GGD type AC low-voltage distribution panel is a technical development project issued by the former Ministry of Energy in 1992, with the premise of promoting the technological progress of China's low



GGD Series Low Voltage Fixed Electrical Switch Panel

GGD Series Low Voltage Fixed Electrical Switch Panel Board Cabinets, Find Details and Price about Switchgear Distribution Box from GGD Series Low Voltage Fixed

Papua New Guinea GGD Type AC Low Voltage Distribution Cabinet

The GGD type AC low-voltage distribution panel is a technical development project issued by the former Ministry of Energy in 1992, with the premise of promoting the technological progress of China's low





GGD Low Voltage Distribution Cabinet , 380V AC Switchgear , Fulleto

Features a universal cabinet frame assembled with 8MF cold-formed steel. The structure provides high mechanical strength and reliable grounding, ensuring stability and durability even in harsh conditions.

Contact Us

For datasheets, pricing, or custom telecom energy solutions, please visit:
<https://koskolong.co.za>