



Adam Tas Corridor Energy

Gigabit Stack Modules and Multimode Optical Interfaces



✓ 50KW/100KWH

✓ HIGHER POWER OUTPUT
IN OFF-GRID MODE

✓ CONVENIENT OPERATION
& MAINTENANCE

✓ PRE-WIRED



Gigabit Stack Modules and Multimode Optical Interfaces

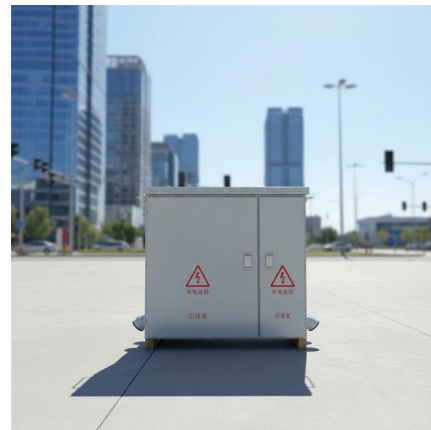


Multi-mode optical fiber

Multi-mode optical fiber is a type of optical fiber mostly used for communication over short distances, such as within a building or on a campus. Multi-mode links can

Cisco SFP Modules for Gigabit Ethernet Applications Data Sheet

The industry-standard Cisco Small Form-Factor Pluggable (SFP) Gigabit Interface Converter (Figure 1) links your switches and routers to the network. The hot-swappable input/output device plugs into a



SFP 1G Ethernet Fiber Module for Managed Switches

The ProSAFE® GBIC Module is a LC duplex connector and meets SFP GBIC standard for use with any SFP GBIC compliant slot.

SFP modules - transceivers for 1/2/4G fibre channel

With support for Fast Ethernet, Gigabit Ethernet, Fibre Channel and legacy protocols such as



SDH/SONET and BiDi, SFP modules enable seamless metro, regional



100GBASE QSFP-100G Modules Data Sheet

The Cisco 100GBASE-SR4-S QSFP Module supports link lengths of up to 70m over OM3 and 100m over OM4 Multimode Fiber with MPO connectors.

Everything You Have to Learn About GBIC and SFP

SFP modules have the added benefit of supporting different interfaces, including 10 Gigabit Ethernet, Ethernet, and Fiber Channel. They are available in



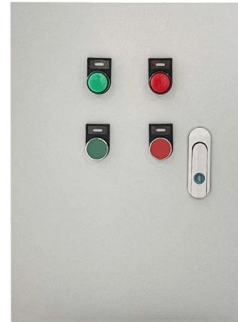
Cisco SFP vs GBIC vs XFP vs SFP+: A Practical

Wavelength: Defines the optical frequency (850 nm for short-range, 1310 nm for mid-range, 1550 nm for long-range). Connector Type: LC or SC,



Features and Applications of the 100G QSFP28

Discover the key features and applications of 100G QSFP28 Multimode optical transceiver modules in the context of cloud computing and 5G networks.



Cisco MGE SFP Modules Cisco Small Business Network Accessories

easy-to-install modules that provide a simple way to add fiber connectivity or an extra Gigabit Ethernet port to your Cisco 100, 200, 300, and 500 Series switches. The transceivers are available for single

Cisco SFP Modules for Gigabit Ethernet Applications

This data sheet describes the benefits, specifications, and ordering information for the Cisco SFP Modules for Gigabit Ethernet Applications.

MORE CASES PRESENTATIONS



Unlocking the Potential of Multimode SFP Modules in

Uncover the advantages of multimode SFP modules for your network infrastructure. Learn about different transceivers, from single-mode to 10 gigabit,



The Knowledge 100G Optical Transceivers You Should

How should the correct 100G optical transceiver module be selected? This blog will introduce 100G optical transceiver related knowledge, hope to help



Cisco MGE SFP Modules Cisco Small Business Network Accessories

Easily connect switches with fiber-optic networking modules Highlights Adds fiber-optic connectivity to Cisco 100 to 500 Series switches High-performance link for connecting networks

Small-Form Factor Pluggable (SFP) and Stacking Accessories

This article provides technical data on Fiber Transceivers and stacking accessories compatible with Meraki devices. Cisco Meraki offers branded SFP modules, and while we do not prevent third-party





Breakout-Capable 100G Optical Modules: Everything

This article explores breakout-capable 100G modules, their key benefits, how to select the right module, typical application scenarios, and

Cisco GLC-GE-100FX 100BASE-FX SFP Multimode GBIC Module

GLC-GE-100FX modules operate in Gigabit Ethernet ports of Cisco switches and routers. All these modules are interoperable with industry wide interfaces compliant to the IEEE 100BASE-FX standard.



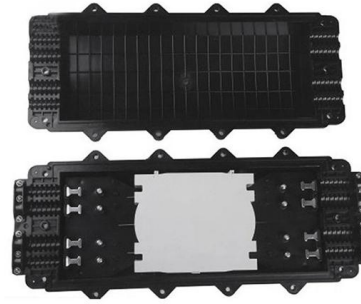
Cisco 100 Gigabit Modules

Explore Cisco 100 Gigabit Ethernet Modules, designed to deliver ultra-high-speed connectivity, scalability, and performance for modern data centers and enterprise networks.



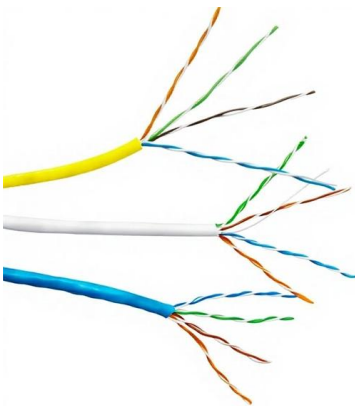
Gigabit SFP Module: A Complete Guide to 1G SFP Transceivers

Learn what a gigabit SFP module is, how it works, main types, key specifications, and common use cases to choose the right 1G SFP for your network.



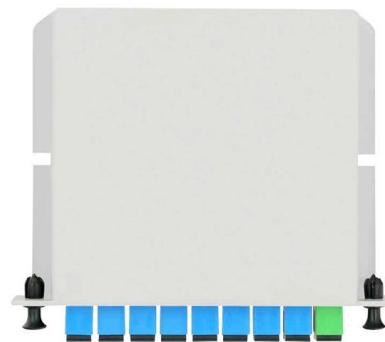
Cisco Gigabit Ethernet GBIC/SFP Modules

Cisco offers a range of GBIC transceivers and Small Form-factor Pluggables (SFP) transceivers for Gigabit Ethernet and Fibre Channel applications. These small,



Cisco SFP Modules for Gigabit Ethernet Applications

Cost-effective Small Form-factor Pluggable (SFP) transceivers for Gigabit Ethernet applications
Product overview The industry-standard Cisco ®



Fiber Optic Transceivers , SFP, QSFP & GBIC , High

SFP, QSFP, and GBIC Modules / Transceivers Our SFP (Small Form-Factor Pluggable), QSFP (Quad Small Form-factor Pluggable), and GBIC (Gigabit



Cisco SFP Modules for Gigabit Ethernet Applications

Product overview The industry-standard Cisco® Small Form-Factor Pluggable (SFP) Gigabit Interface Converter (Figure 1) links your switches and routers to the network. The hot-swappable input/output



Cisco 40 Gigabit Modules

Cisco offers a broad range of 40 Gigabit Ethernet interfaces to meet the high-performance connectivity requirements of campus, data center, and cloud



Choosing Between GBIC vs. SFP Modules: A

What Is the GBIC Module? A GBIC (Gigabit Interface Converter) is a hot-swappable input/output device that connects a Gigabit Ethernet port to a



Cisco Optics , Transform Your Network

Get the highest quality, performance-leading optical transceivers for any network architecture. Find the transceiver model to fit your network.



10G Multi-Mode Optical Module

SFP+ transceiver that supports 10G connections up to 300 m using multi-mode fiber with a duplex LC UPC connector.



SFP Modules: Types, Selection Guide & Applications

This guide demystifies SFP modules, exploring their design, types, key differences from related modules (like SFP+, SFP28, and QSFP), and actionable tips for selecting the right one for

Cisco 100GBASE QSFP-100G Modules Data Sheet

The Cisco QSFP-100G-SR-S Module is a pluggable optical transceiver with a duplex LC connector interface supporting link lengths of 70 and 100 meters on laser-optimized OM3 and OM4/OM5



Contact Us

For datasheets, pricing, or custom telecom energy solutions, please visit:
<https://koskolong.co.za>